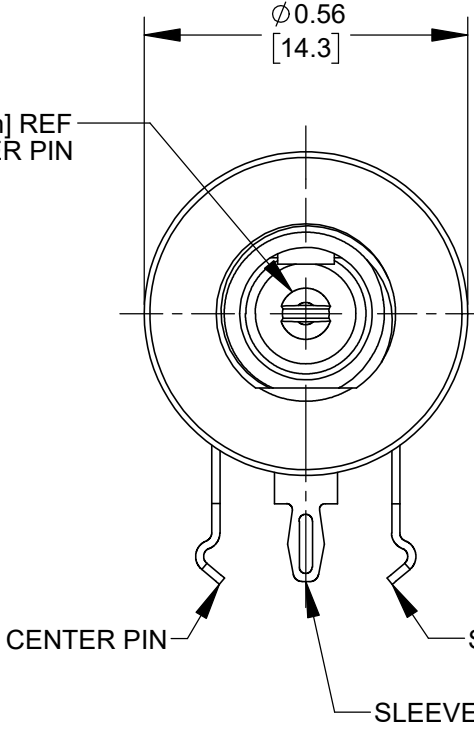


LONG BUSHING RIGHT-ANGLE PC POWER JACK

FLAT WASHER

HEX NUT

Ø 0.084 [2.1 mm] REF  
CENTER PIN



5/16-32 NEF 2A  
THREAD REF

0.75  
[18.9]

0.285  
[7.24]  
BUSHING FLAT  
REF

0.28  
[7.1]

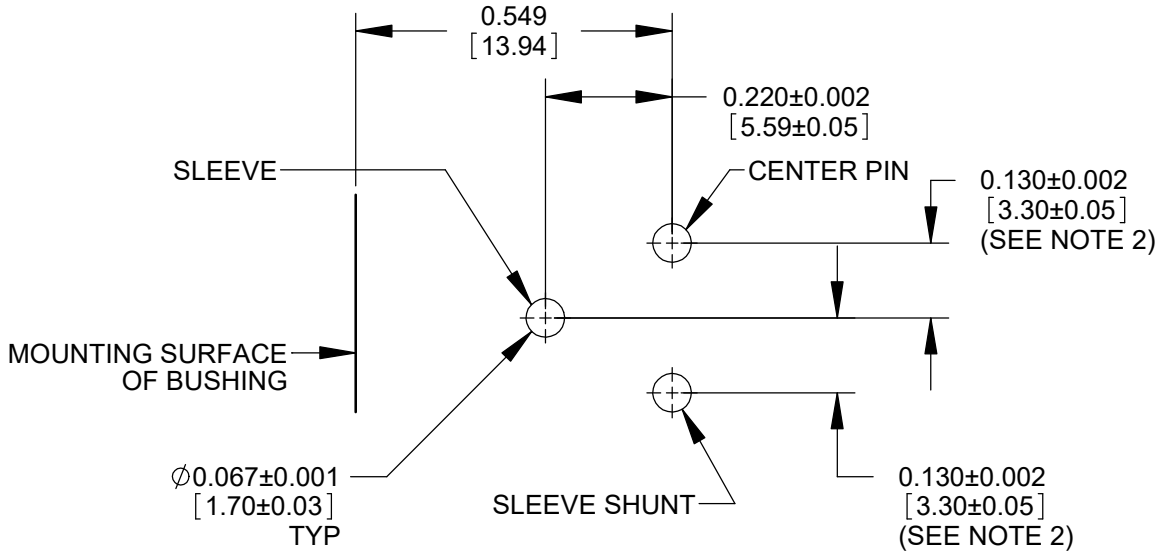
0.365  
[9.27]

0.585  
[14.85]

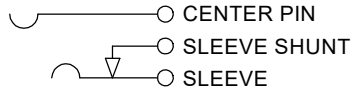
0.330  
[8.38]

SILICONE ADHESIVE BACKING

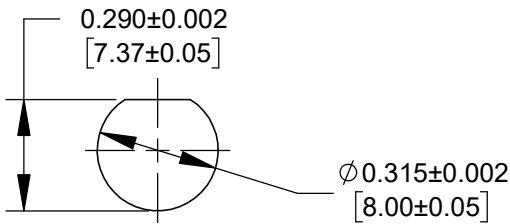
0.140 REF  
[3.56]



RECOMMENDED PCB LAYOUT  
(COMPONENT SIDE)



SCHEMATIC



RECOMMENDED PANEL MTG HOLE

NOTES:

- MATERIALS:  
BUSHING - COPPER ALLOY, NICKEL PLATED  
INSULATOR HOUSING - THERMOPLASTIC, RED  
PIN, SPRING AND TERMINALS - COPPER ALLOY, SILVER PLATED  
INSULATORS - PHENOLIC  
HEX NUT - COPPER ALLOY, NICKEL PLATED  
FLAT WASHER - STEEL, NICKEL PLATED  
SEAL COVER, O-RING - SILICONE, BLACK  
POTTING COMPOUND - SILICONE ADHESIVE, LIGHT GRAY
- FOR HAND INSERTION USE 0.130 [3.30] SPACING.  
FOR AUTOMATED INSERTION USE 0.135 [3.43] SPACING.
- IT IS RECOMMENDED THAT THE JACK MOUNTING NUT BE TIGHTENED  
SNUG BY HAND BEFORE APPLYING A FINAL TIGHTENING TORQUE OF  
3-4 LB-IN USING HAND TOOLS ONLY. POWER DRIVER OR IMPACT  
DRIVERS ARE NOT RECOMMENDED.
- DIMENSIONS SHOWN FOR REFERENCE ONLY.
- THE PRODUCTS IN THIS SERIES ARE RoHS COMPLIANT.

CUSTOMER DRAWING

					<div>UNLESS OTHERWISE SPECIFIED</div> <div>1. ALL DIMENSIONS IN INCHES [mm]</div> <div>- TWO PLACE DECIMALS    ±0.02 [0.5]</div> <div>- THREE PLACE DECIMALS    ±0.005 [0.13]</div>	THIS DRAWING DESCRIBES A DESIGN CONSIDERED PROPRIETARY IN NATURE, DEVELOPED AND MANUFACTURED BY SWITCHCRAFT INC. AND IS RELEASED ON A CONFIDENTIAL BASIS FOR IDENTIFICATION PURPOSES ONLY.															
						SIZE	WIDTH		MULT		LBS/M		TEMPER								
						FINISH SPEC No.						MATERIAL SPEC No.									
						FIRST USED ON				SCALE 3:1		<div>Switchcraft®</div>									
						DATE DRAWN 5/28/24	BY PNK	CHKD PNK 5/28/24		APVD SRC 5/28/24											
A	28689	07/16/24	PC	TJK								SHEET 1 OF 1									
REV	ECO NUMBER	DATE	BY	APVD								PART No.				REV					
REVISIONS					DO NOT SCALE DRAWING					2.1mm POWER JACK, LONG BUSHING RIGHT-ANGLE PC, SEALED UNMATED, RoHS						L721RAU				A	