



SBC-pITX-BT

Pico-ITX SBC with Intel® Atom® E3800 (Codename: Bay Trail)
Processors SoCs and ECC DDR3L memory

Limitless Embedded applications



HIGHLIGHTS



CPU
Intel® Atom® E3800 family of System-on-Chip



CONNECTIVITY
2x GbE; Half miniPCI-e slot; 8x GPIOs



GRAPHICS
Integrated Intel® HD Graphics controller



MEMORY
Up to 8GB DDR3L ECC SO-DIMM

Available in Industrial Temperature Range



MAIN FIELDS OF APPLICATION



Transportation



Safety &
Surveillance



Industrial
Automation



Energy &
Utilities

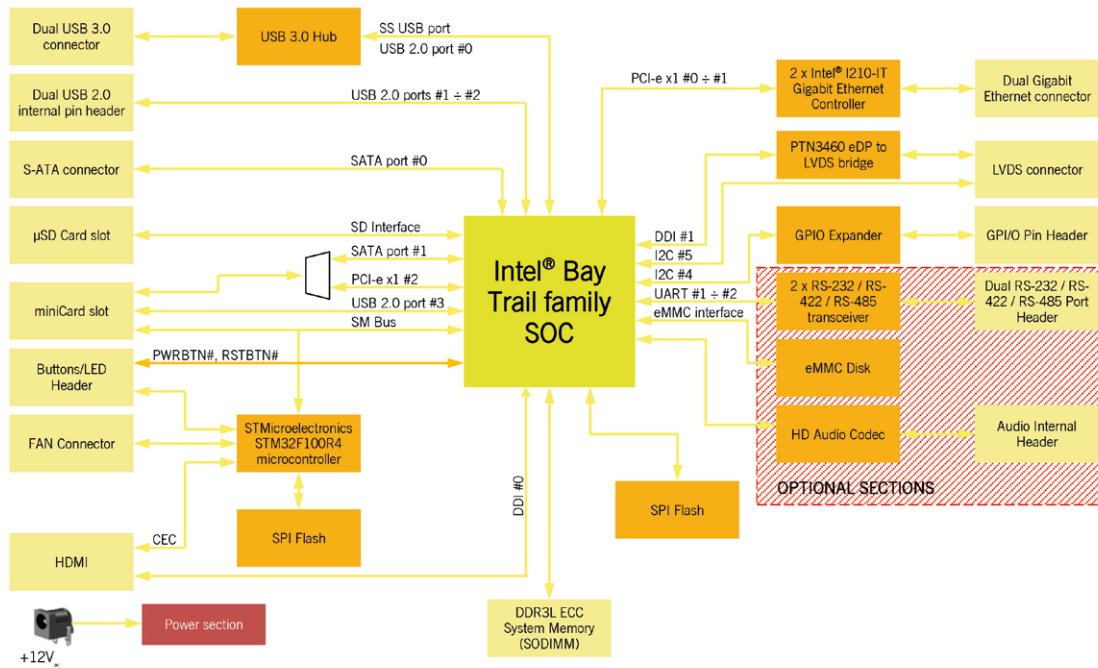
FEATURES

	Processor	Intel® Atom® E3845, Quad Core @1.91GHz, 2MB Cache, 10W TDP Intel® Atom® E3827, Dual Core @1.75GHz, 1MB Cache, 8W TDP Intel® Atom® E3826, Dual Core @1.46GHz, 1MB Cache, 7W TDP Intel® Atom® E3825, Dual Core @1.33GHz, 1MB Cache, 6W TDP Intel® Atom® E3815, Single Core @1.46GHz, 512KB Cache, 5W TDP Intel® Atom® E3805, Dual Core @1.33GHz, 1MB Cache, 3W TDP		Audio	Optional HD Audio Codec Cirrus Logic CS4207 Mic In, Line out internal pin header connector
	Max Cores	4		Other Interfaces	8 x GPIO FAN connector Switch / LED Front Header I2C connector with INT and RST# signals
	Max Thread	4		Serial Ports	2 x optional RS-232 / RS-422 / RS-485 Serial ports on internal pin Header
	Memory	Up to 8GB on DDR3L-1333 ECC SO-DIMM Slot (DDR3L-1333 with E3845 and E3827, DDR3L-1067 the others)		Power Supply	12V _{DC} ± 5% RTC Battery with lead cable and connector
	Graphics	Integrated Intel® HD Graphics 4000 series controller (not for E3805) Dual independent display support HW decoding of H.264, MPEG2, MVC, VC1, VP8, MJPEG formats HW encoding of H.264, MPEG2 and MVC formats		Operating System	Microsoft® Windows 7 (32/64 bit) Microsoft® Windows 8.1 (32/64 bit) Microsoft® Windows 10 (32/64 bit) Microsoft® Windows 10 IoT Microsoft® Windows Embedded Standard 7 (32/64 bit) Microsoft® Windows Embedded Compact 7 Linux (32/64 bit) Yocto
	Video Interfaces	HDMI® connector Single / Dual Channel 18- / 24-bit LVDS connector		Operating Temperature*	0°C ÷ +60°C (Commercial temperature) -40° ÷ +85°C (Industrial temperature)
	Video Resolution	HDMI®, resolution up to 1080p @ 60Hz LVDS, resolution up to 1920 x 1200		Dimensions	72 x 100 mm (2.83" x 3.93")
	Mass Storage	Optional eMMC drive on-board 1 x standard SATA connector mini mSATA interface on miniCard slot (shared with miniPCI-e) microSD Card slot	*Measured at any point of SECO standard heatspreader for this product, during any and all times (including start-up). Actual temperature will widely depend on application, enclosure and/or environment. Upon customer to consider application-specific cooling solutions for the final system to keep the heatspreader temperature in the range indicated.		
	Networking	Dual Gigabit Ethernet connector			
	USB	2 x USB 3.0 Host ports on Dual Type-A socket 2 x USB 2.0 Host ports on internal pin header 1 x USB 2.0 Host port on miniPCI-e slot			
	PCI-e	Half miniPCI-e slot (shared with mSATA)			

SBC-pITX-BT

Pico-ITX SBC with Intel® Atom® E3800 (Codename: Bay Trail)
Processors SoCs and ECC DDR3L memory

BLOCK DIAGRAM



Streamline and expedite your edge computing implementations

EDGEHOG OS

A flexible operating system that adapts to your needs, thanks to the customization tool and Docker support. Reliability and security are built-in through a dual-partition system and native integration with Exein's robust AI-based protection.

DATA ORCHESTRATION

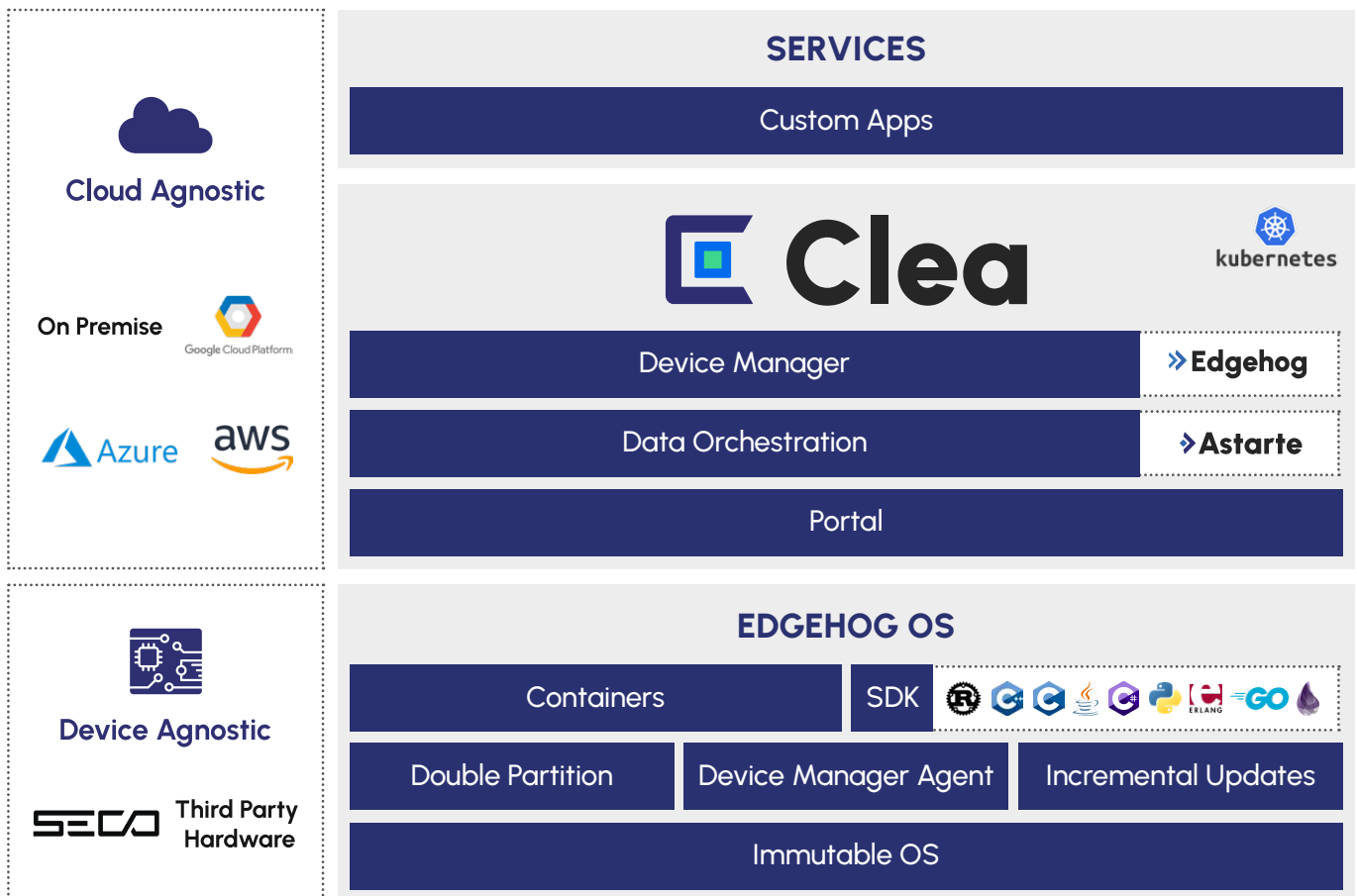
Integrate third-party services, simplify data flows and analysis, and enhance business efficiency by enabling easy and fast utilization of AI.

DEVICE MANAGER

Update, configure, and manage remote devices. Optimize time and costs to maximize operational efficiency and security without the need for costly field interventions.

PORTAL

Analyze data from remote devices, customize the user experience with applications tailored to user needs, and manage user rights, company access, and tenant privileges.



Scan to know more about our solution

EDGEHOG OS



CLEA DOCS

