

NOTES:

1. MATERIAL:
CARD EJECTOR: NYLON 6/6, 94V-2
ROLL PIN: STAINLESS STEEL 304
2. USE ONE (1) ROLL PIN (P/N: RP-250) FOR EACH CARD EJECTOR.
3. PRE-ASSEMBLED ROLL PINS WILL HAVE A "/PA" SUFFIX TO PART NUMBER. ROLL PIN ASSEMBLY CAN BE ASSEMBLED AT BIVAR OR MANUFACTURING LOCATIONS.
4. ROLL PINS ARE PACKAGED AND SHIPPED UNASSEMBLED WITH PART NUMBERS WITHOUT THE "/PA" SUFFIX.
5. HOT STAMPED CARD EJECTORS HAVE A "/HS" SUFFIX TO PART NUMBER. HOT STAMPING SHALL BE PERFORMED AT THE BIVAR LOCATION.
6. CUSTOM*** COLORS CAN BE REQUESTED AND ARE SUBJECT TO AVAILABILITY.

PART NUMBER ASSIGNMENT

CP - 0X ZZ/YY

X	CARD THICKNESS
6	1/16" (1.6mm)
9	3/32" (2.4mm)
/YY	FEATURE
/PA	PRE-ASSEMBLED ROLL PIN
/HS	HOT STAMPED
ZZ (-06)	COLOR
BK	BLACK
BE	BLUE
GN	GREEN
NT	NATURAL
RD	RED
WE	WHITE
YW	YELLOW
ZZ (-09)	COLOR
NT	NATURAL
WE	WHITE
CUSTOM***	COLOR
OE	ORANGE
VT	VIOLET
FG	FOREST GREEN
AA	AQUAMARINE
PK	PINK
GY	GRAY
LE	LIME
BN	BROWN

*** Applies to both CP-06 & CP-09

PART NUMBER EXAMPLES:

CARD EJECTOR, NATURAL,
FOR CARD THICKNESS 1/16"
(UNASSEMBLED ROLL PIN)

CP-06 NT

CARD EJECTOR, WHITE,
FOR CARD THICKNESS 3/32"
WITH PRE-ASSEMBLED ROLL PIN

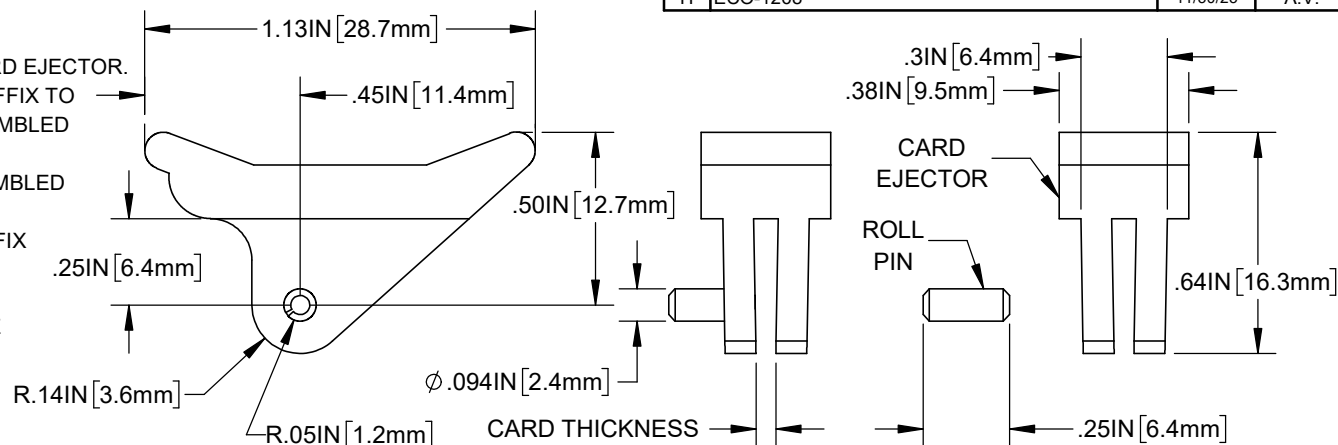
CP-09 WE/PA

CARD EJECTOR,
YELLOW, FOR CARD THICKNESS 1/16"
WITH PRE-ASSEMBLED ROLL PIN AND
REQUIRES HOT STAMPING

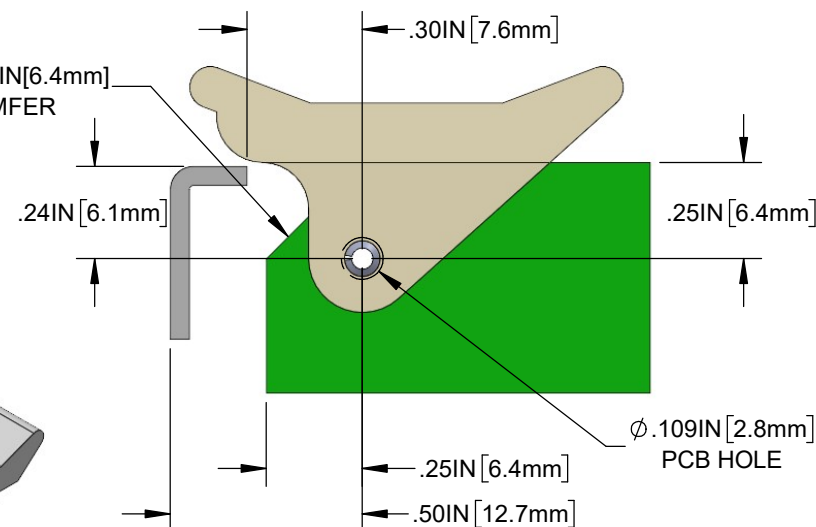
CP-06 YW/PA/HS

CARD EJECTOR, VIOLET,
FOR CARD THICKNESS 1/16"
(UNASSEMBLED ROLL PIN)

CP-06 VT

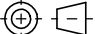


45° X 0.25IN [6.4mm]
CHAMFER



RECOMMENDED APPLICATION LAYOUT

CUSTOMER USE DRAWING

STANDARD TOLERANCE (UNLESS OTHERWISE SPECIFIED)		BIVAR [®]	
DECIMALS	ANGULAR	4 THOMAS, IRVINE, CA. 92618 TEL: (949) 951-8808 FAX: (949) 951-3974	
.X ± .1	X° ± 1°	TITLE: CARD EJECTOR KIT/ASSEMBLY	
.XX ± .01			
.XXX ± .005			
		DRAWING NO: CP-0X_H	
DESIGNED: S. IRVING	DATE: 09/15/1998	REVISION: H	
REVISED: A. VALDEZ	DATE: 11/30/2023	SHEET SIZE A	CAGE CODE: 32559
CHECKED: R. PEREYRA	DATE: 11/30/2023	SCALE: N/A	SHEET # 1 OF 1
CAD GENERATED DOCUMENT, DO NOT MEASURE DRAWING			