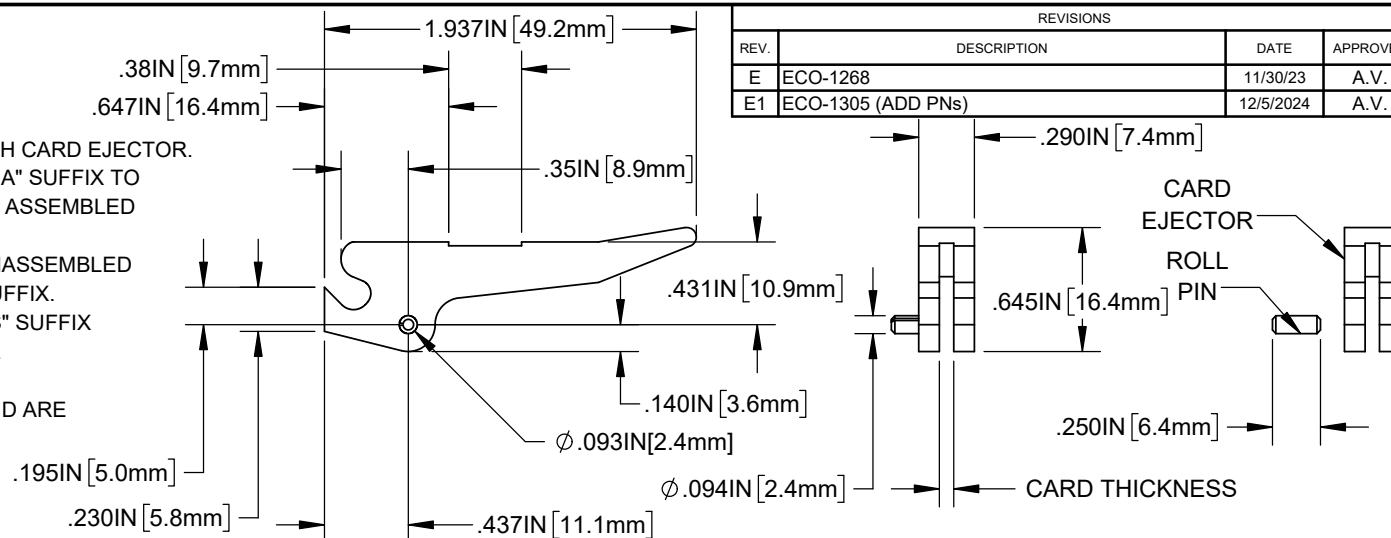


NOTES:

1. MATERIAL:
CARD EJECTOR: NYLON 6/6, 94V-2
ROLL PIN: STAINLESS STEEL 304
2. USE ONE (1) ROLL PIN (P/N: RP-312) FOR EACH CARD EJECTOR.
3. PRE-ASSEMBLED ROLL PINS WILL HAVE A "/PA" SUFFIX TO PART NUMBER. ROLL PIN ASSEMBLY CAN BE ASSEMBLED AT BIVAR OR MANUFACTURING LOCATIONS.
4. ROLL PINS ARE PACKAGED AND SHIPPED UNASSEMBLED WITH PART NUMBERS WITHOUT THE "/PA" SUFFIX.
5. HOT STAMPED CARD EJECTORS HAVE A "/HS" SUFFIX TO PART NUMBER. HOT STAMPING SHALL BE PERFORMED AT THE BIVAR LOCATION.
6. CUSTOM*** COLORS CAN BE REQUESTED AND ARE SUBJECT TO AVAILABILITY.

REVISIONS			
REV.	DESCRIPTION	DATE	APPROVED
E	ECO-1268	11/30/23	A.V.
E1	ECO-1305 (ADD PN's)	12/5/2024	A.V.



PART NUMBER ASSIGNMENT

100X-XXX ZZ/YY

X	CARD THICKNESS
1001-062	.062in (1.6mm)
1002-093	.093in (2.4mm)
YY	FEATURE
/PA	PRE-ASSEMBLED ROLL PIN
/HS	HOTSTAMPED
ZZ	COLOR
NT	NATURAL
CUSTOM***	COLOR
BK	BLACK
BE	BLUE
GN	GREEN
RD	RED
YW	YELLOW
OE	ORANGE
VT	VIOLET
FG	FOREST GREEN
AA	AQUAMARINE
PK	PINK
GY	GRAY
LE	LIME
BN	BROWN

PART NUMBER EXAMPLES:

CARD EJECTOR, NATURAL,
FOR CARD THICKNESS 1/16"
(UNASSEMBLED ROLL PIN)

1001-062 NT

CARD EJECTOR, ORANGE,
FOR CARD THICKNESS 3/32"
WITH PRE-ASSEMBLED ROLL PIN

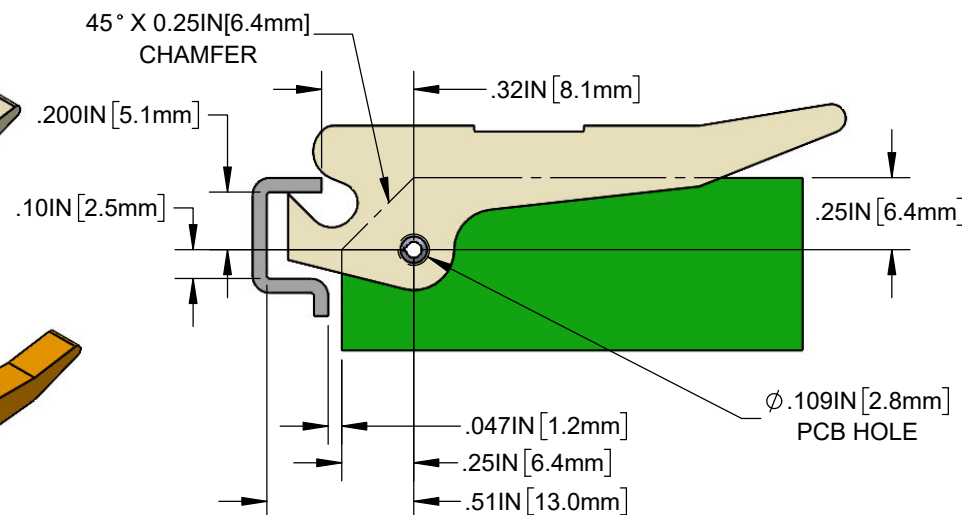
1002-093 OE/PA

CARD EJECTOR, GRAY,
FOR CARD THICKNESS 1/16"
WITH PRE-ASSEMBLED ROLL PIN AND
REQUIRES HOT STAMPING

1001-062 GY/PA/HS

CARD EJECTOR, VIOLET,
FOR CARD THICKNESS 1/16"
(UNASSEMBLED ROLL PIN)

1001-062 VT



RECOMMENDED APPLICATION LAYOUT

CUSTOMER USE DRAWING

STANDARD TOLERANCE (UNLESS OTHERWISE SPECIFIED)		 4 THOMAS, IRVINE, CA. 92618 TEL: (949) 951-8808 FAX: (949) 951-3974	
DECIMALS	ANGULAR		
.X ± .1	X° ± 1°	TITLE: CARD EJECTOR KIT/ASSEMBLY	
.XX ± .01		DESIGNED: S. IRVING	DATE: 05/13/1998
.XXX ± .005		REVISOR: A. VALDEZ	DATE: 12/05/24
		CHECKED: R. PEREYRA	DATE: 12/05/24
		DRAWING NO: 100X-XXX_E1	REVISION: E1
		SHEET SIZE A	CAGE CODE: 32559
		SCALE: N/A	SHEET # 1 OF 1

CAD GENERATED DOCUMENT, DO NOT MEASURE DRAWING