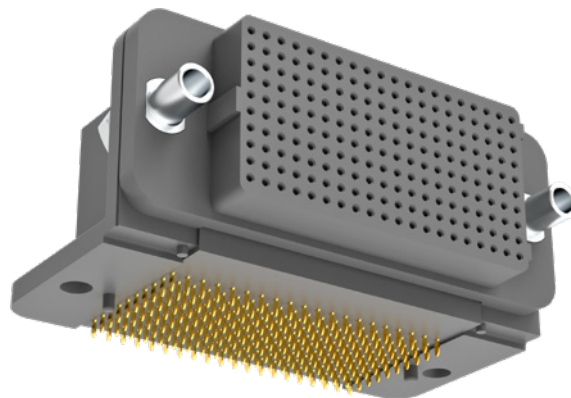


## VSRAF — Right Angle Female

VSRAF signal-integrity connectors are used in right angle, PCB-mount applications where a female interface is required. Termination styles include press-fit, paste-in-hole or plated thru-hole. Pitch: 1.27 mm.



### Sample Part Number Format: VSRAF-04-10-50-02-G

VSRAF			50		
<b>SERIES</b> Right Angle (Female) 1.27 mm	<b>ROWS</b> 04 – 4 Rows 05 – 5 Rows 06 – 6 Rows 08 – 8 Rows 10 – 10 Rows	<b>COLUMNS</b> 10 – 10 Columns 20 – 20 Columns 30 – 30 Columns 40 – 40 Columns 50 – 50 Columns	<b>CONTACT PLATING</b> 50 – 50 $\mu$ " Au	<b>TERMINATION</b> 00 – Press-fit 01 – Paste-in-hole 02 – PTH 0.078" 03 – PTH 0.109" 04 – PTH 0.140" 05 – PTH 0.156" 06 – PTH 0.172"	<b>OPTIONS</b> Blank – No options* G – Guide socket N – Fixed jacknut J – Turning jackscrew L – Locking screw

### Notes:

See AirBorn spec ESL5001 for installation information.

Connector potting is standard.

\* No hardware supplied with blank hardware option connectors.

AirBorn can manufacture other configurations to your exact specifications.

RoHS Complaint; certificate of conformance available upon request with each shipment.

Please view document VSRAF-XX-XX-XX-XX-X on [airborn.com](http://airborn.com) before part configuration for more product specification information.

NOTE: Please consult [airborn.com](http://airborn.com) to configure your part number and for the latest revision controlled drawing and technical data.

## Reliable Contact Every Time

VerSI connectors feature a low-mating-force, high-reliability contact system with four points-of-contact.

The open-pin field design allows flexibility in termination schemes. Single-ended, differential pair, power, and ground are all available in one connector design.

