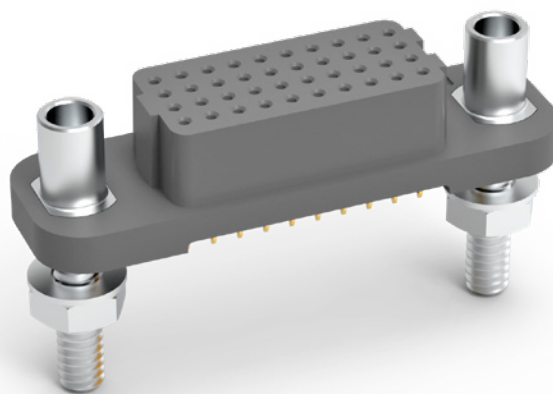


## VSF — Vertical Female

VSF signal-integrity connectors are used in vertical, PCB-mount applications where a male interface is required. Termination styles include press-fit, paste-in-hole and plated thru-hole. Pitch: 1.27 mm.



### Sample Part Number Format: VSF-04-10-50-02-G



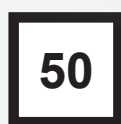
**SERIES**  
Vertical (Female)  
1.27 mm



**ROWS**  
04 – 4 Rows  
05 – 5 Rows  
06 – 6 Rows  
08 – 8 Rows  
10 – 10 Rows



**COLUMNS**  
10 – 10 Columns  
20 – 20 Columns  
30 – 30 Columns  
40 – 40 Columns  
50 – 50 Columns



**CONTACT PLATING**  
50 – 50  $\mu$ " Au



**TERMINATION**  
00 – Press-fit  
01 – Paste-in-hole  
02 – PTH 0.078"  
03 – PTH 0.109"  
04 – PTH 0.140"  
05 – PTH 0.156"  
06 – PTH 0.172"  
10<sup>†</sup> – SMT - SN63PB37  
Solder Dipped  
11<sup>†</sup> – SMT - 42Sn/57.6Bi/0.4Ag  
lead free, solder dipped



**OPTIONS**  
Blank – No hardware<sup>‡</sup>  
G – Guide socket<sup>†</sup>  
G1 – Guide socket<sup>‡</sup>  
J – Turning jackscrew<sup>†</sup>  
J1 – Turning jackscrew<sup>‡</sup>  
L – Locking screw<sup>†</sup>  
L1 – Locking screw<sup>‡</sup>  
N – Fixed jacknut<sup>†</sup>  
N1 – Fixed jacknut<sup>‡</sup>

### Notes:

See AirBorn spec ESL5001 for installation information.  
Connector potting is standard.

<sup>†</sup>Used for PC board thickness up to 0.125"

<sup>‡</sup>Used for PC board thickness 0.125" up to 0.250"

<sup>†</sup>Surface Mount Termination only available on 4 Row vertical connectors.

<sup>‡</sup>No hardware supplied with blank hardware option connectors.

AirBorn can manufacture other configurations to your exact specifications.

RoHS Compliant (except for termination option 10); certificate of conformance available upon request with each shipment

Please view document VSF-XX-XX-XX-XX on [airborn.com](http://airborn.com) before part configuration for more product specification information

NOTE: Please consult [airborn.com](http://airborn.com) to configure your part number and for the latest revision controlled drawing and technical data.

## Reliable Contact Every Time

VerSI connectors feature a low-mating-force, high-reliability contact system with four points-of-contact.

The open-pin field design allows flexibility in termination schemes. Single-ended, differential pair, power, and ground are all available in one connector design.

