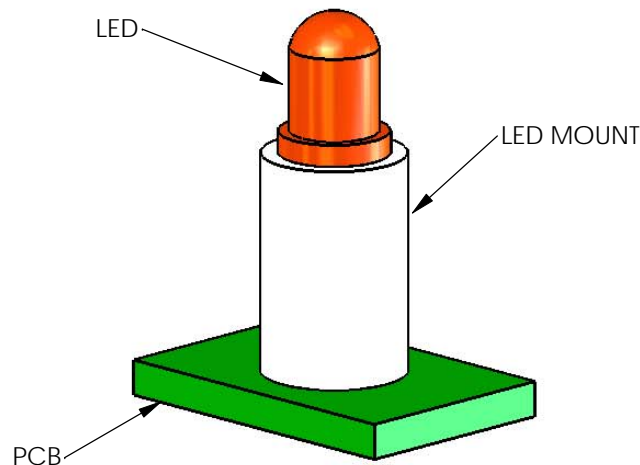
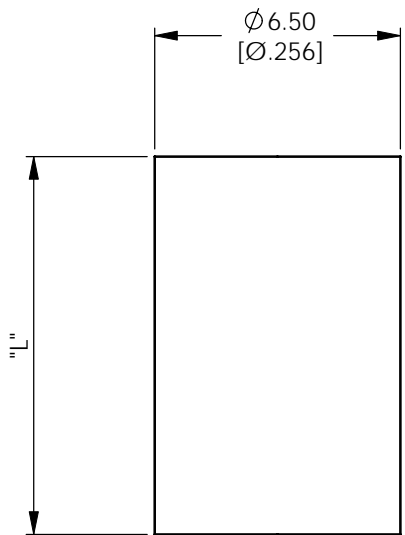
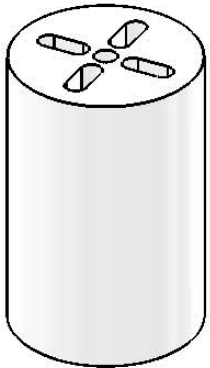
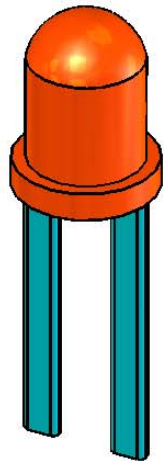
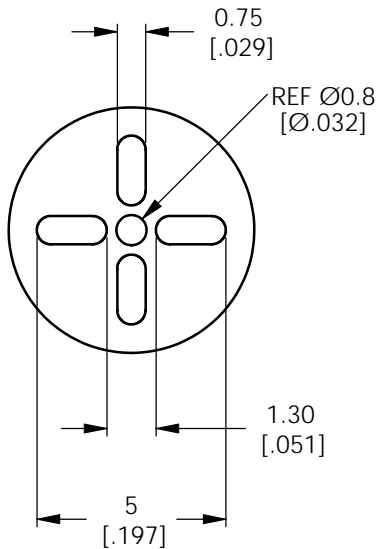


A B C D E F


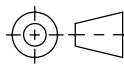
AVAILABLE BY SPECIAL ORDER NAFTA REGION ONLY

| REV. | MODIFICATION. | DATE | DRN |
|------|---------------|----------|-----|
| 01 | NEW DWG | 25/05/01 | JPM |
| 02 | SCN04-093 | 25/05/01 | OW |
| 03 | SCN04-096 | 25/05/01 | OW |
| 04 | SCN04-100 | 14/10/04 | OW |
| 05 | ECN05-021 | 26/01/05 | OW |
| 06 | CO-2010553 | 09/02/09 | OW |



TYPICAL APPLICATION VIEW

NOTES:
1) FOR USE WITH 5mm, T-1 3/4 LEDS.
2) PARTS AVAILABLE IN 1MM INCREMENTS.
3) SPECIAL LENGTHS AVAILABLE BY SPECIAL ORDER.

| | | | | | | | | | |
|---|------------------|--|-----------------|--|---|--------------|--------------------|--|--|
| INFORMATION CONTAINED IN THIS DOCUMENT IS CONFIDENTIAL TO RICHCO INTERNATIONAL Co. Ltd. AND MAY NOT BE DISCLOSED OR REPRODUCED IN WHOLE OR PART WITHOUT THEIR WRITTEN CONSENT | | | | | | | | | |
|  | | | | ALL PRIMARY DIMENSIONS IN mm ALL SECONDARY DIMENSIONS IN INCHES METRIC GENERAL TOLERANCES ±0.25 ARE PRIMARY UNLESS OTHERWISE STATED 1 DECIMAL PLACE ± 2 DECIMAL PLACES ± ANGULAR ±1° IMPERIAL GENERAL TOLERANCES ±0.010 ARE FOR REFERENCE UNLESS OTHERWISE 1 DECIMAL PLACE ± 2 DECIMAL PLACES ± ANGULAR ±1° | | | | | |
| MATERIAL: PVC UL94 V-0 (RMS-388) | | | | | COLOUR: BLACK | | | | |
| TITLE: LED MOUNTS | | | | | PART No: LEDM-3-XX | | | | |
| DRG No: 786-9020 | | | NPR REF: N/A | |  | | SIZE A4 | | |
| DRN OW | DATE 14/10/04 | | CHKD NJB | DATE 14/10/04 | | SCALE NTS | SHEET No 1 OF 1 | | |

| PART No. | LENGTH |
|-----------------------|--------------|
| LEDM-3-02 - LEDM-3-30 | 2.0mm - 30mm |

A B C D E F

Mouser Electronics

Authorized Distributor

Click to View Pricing, Inventory, Delivery & Lifecycle Information:

[Essentra:](#)

[LEDM-3-30](#) [LEDM-3-16](#) [LEDM-3-07](#) [LEDM-3-27](#) [LEDM-3-28](#) [LEDM-3-23](#) [LEDM-3-25](#) [LEDM-3-11](#) [LEDM-3-05](#)
[LEDM-3-19](#) [LEDM-3-17](#) [LEDM-3-15](#) [LEDM-3-22](#) [LEDM-3-18](#) [LEDM-3-20](#) [LEDM-3-26](#) [LEDM-3-12](#) [LEDM-3-29](#)