

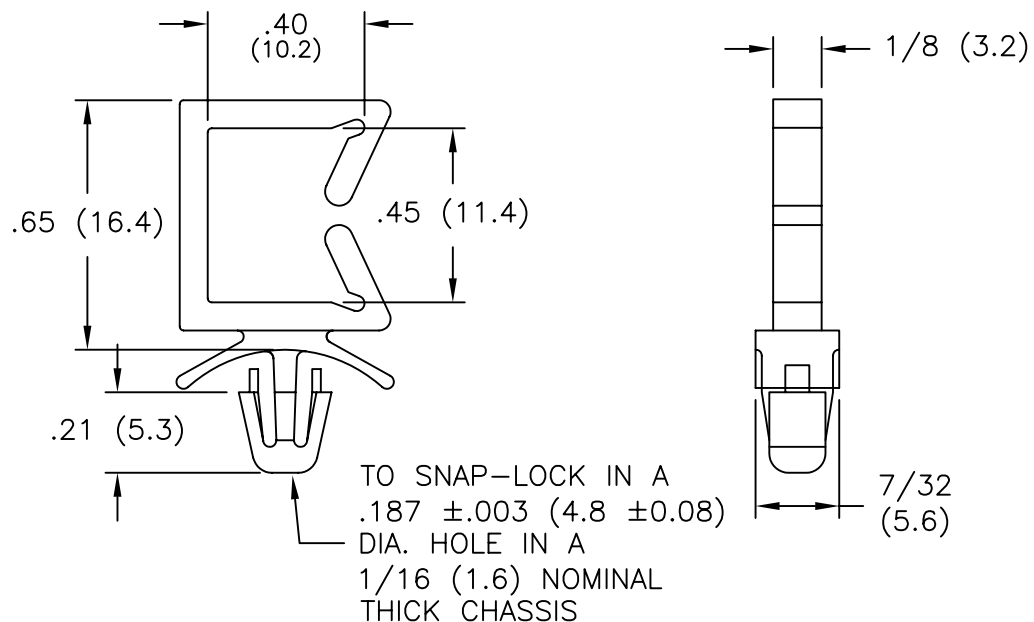
UNCONTROLLED COPY

MAT'L: NYLON 66
(RMS-01), NATURAL.
PART NO.

MAT'L: NYLON 66
(RMS-19), NATURAL.
FLAME RETARDANT
PART NO.

WS-SE-A-2-01

WS-SE-A-2-19



TITLE: WIRE SADDLE SIDE ENTRY-02



DWG IN
IN (MM)



FINAL

TOLERANCES
UNLESS NOTED
.XX=±.010
.XXX=±.005
FRAC=1/64
ANG=1°

FILE # WSSEA2

DWN: P.B.

APP:

MAT'L: SEE TABLE

DT: 08/18/94

DT:

RE: RICHCO, INC.

RICHCO INC.
PO BOX 804238, CHICAGO, 60680
(773) 539-4060

PART #
WS-SE-A-2 SERIES

PRINT
TYPE

CA

A	REMOVED NOTES; ADDED TABLE AND CHANGED FILE NO.	SM 04.12.01
REV	DESCRIPTION	ENGR DATE

Mouser Electronics

Authorized Distributor

Click to View Pricing, Inventory, Delivery & Lifecycle Information:

Essentra:

[WS-SE-A-2-01](#) [WS-SE-A-2-19](#)