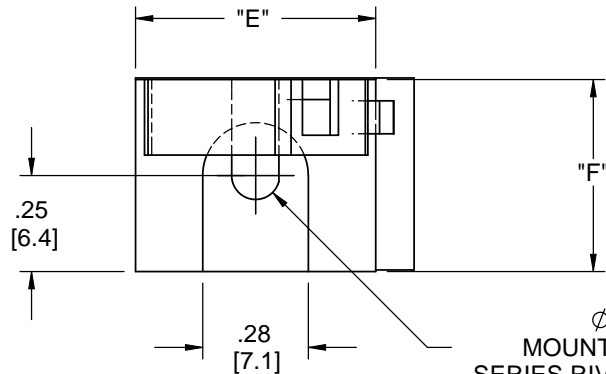
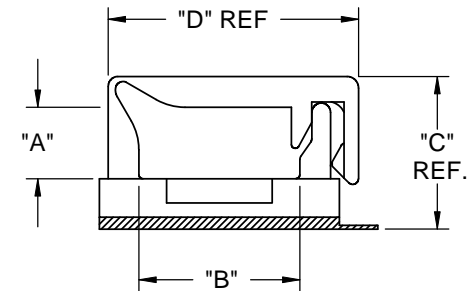
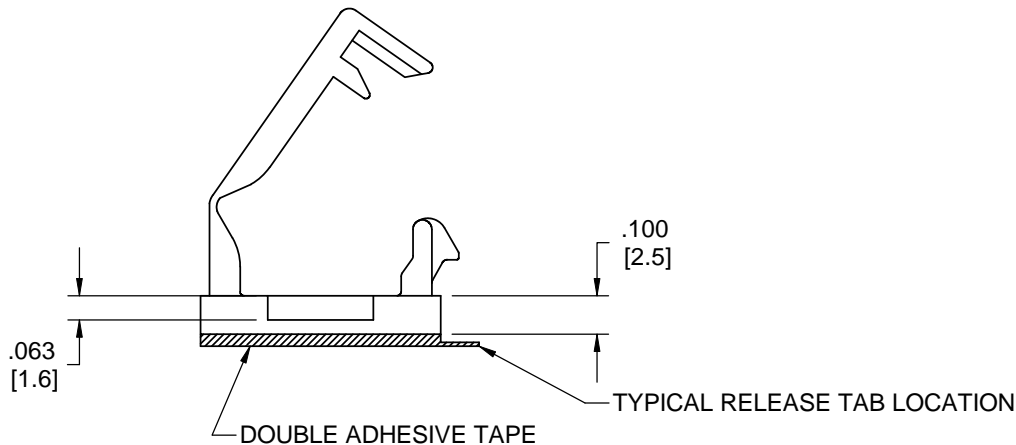
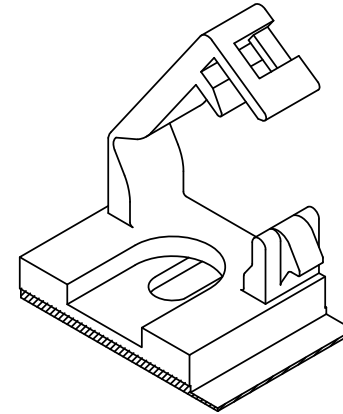


Part Number	DIM "A"	DIM "B"	DIM "C"	DIM "D"	DIM "E"	DIM "F"	MOUNTING
WSLTB-01A-19A-RT	.19 [4.8]	.42 [10.7]	.41 [10.4]	.66 [16.8]	.63 [16.0]	.50 [12.7]	ACRYLIC ADHESIVE
WSLTB-01A-19	.19 [4.8]	.42 [10.7]	.38 [9.6]	.66 [16.8]	.63 [16.0]		SRX-3XXX RIVET
WSLTB-02A-19A-RT	.39 [10.0]	.64 [16.3]	.61 [15.5]	.88 [22.4]	.85 [21.5]		ACRYLIC ADHESIVE
WSLTB-02A-19	.39 [10.0]	.64 [16.3]	.58 [14.7]	.88 [22.4]	.85 [21.5]		SRX-3XXX RIVET






Ø.125[3.2]
MOUNT WITH SR-3000
SERIES RIVETS OR #4 SCREW



NOTES:

1. MATERIAL: FLAME RETARDANT V-0 NYLON (RMS-19)
V-2 NYLON (RMS-01) BY SPECIAL REQUEST
2. COLOR: NATURAL
3. ADHESIVE: 1/32 ACRYLIC ADHESIVE (RMS-15).
4. TYPICAL OVERHANG OF TAPE FROM EDGE OF BASE TO BE .079 [2] MAX.

TITLE: WIRE SADDLE LOCKING TOP ON BASE							DWG IN IN [MM]	
CREATED USING SOLIDWORKS	FILE #: WSLTB		DWN: DLC	APP: DLC	FINAL			
TOLERANCES UNLESS NOTED .XX=±.010 .XXX=±.005 FRAC.=±1/64 ANG.=±1°	SHEET: 1 OF 1	SHEET SIZE: A	DT: 3/20/03	CHKD: DJZ	PART #	SEE CHART		PRINT TYPE CA
RE: RICHCO-INC --	RICHCO, INC. ENG@RICHCO-INC.COM (773) 539-4060							

C	SEE CO 200270 FOR CHANGES	SK	10/29/08
B	SEE CO 200096 FOR CHANGES	SK	01/02/08
A	RELEASED FOR PRODUCTION	SM	05.21.03
REV.	DESCRIPTION	ENGR.	DATE

Mouser Electronics

Authorized Distributor

Click to View Pricing, Inventory, Delivery & Lifecycle Information:

Essentra:

[WSLTB-02A-19A](#) [WSLTB-01A-19](#) [WSLTB-01A-19A](#) [WSLTB-02A-19](#) [WSLTB-03A-19A](#)