

A

B

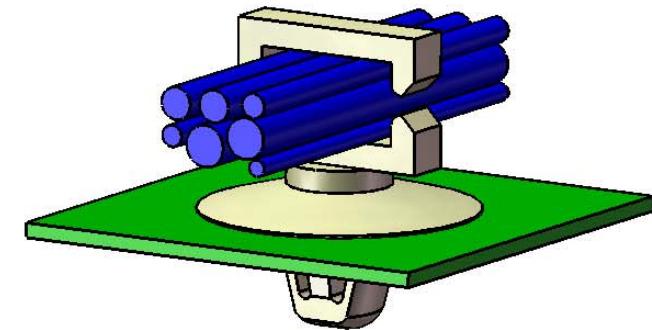
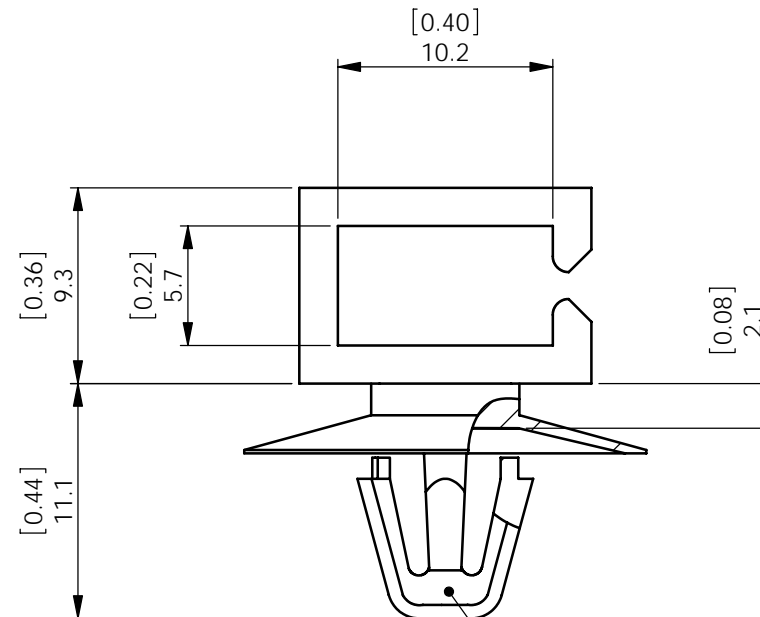
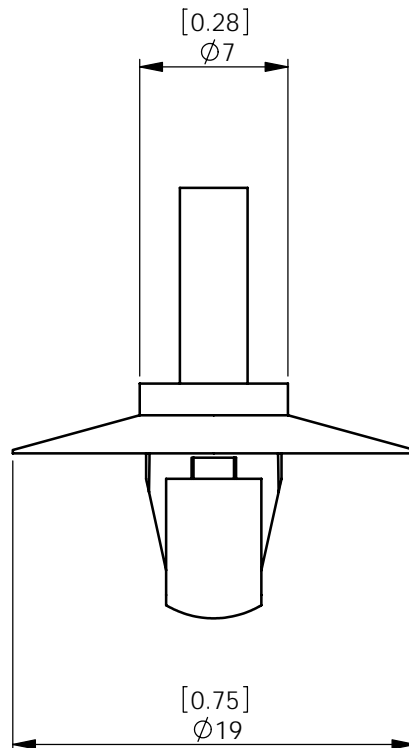
C

D

E

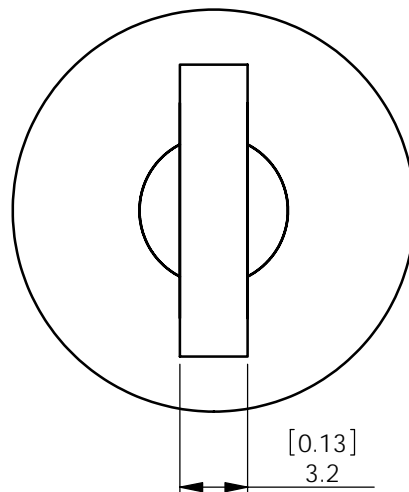
F

| REV. | MODIFICATION. | DATE | DRN |
|------|---------------|----------|-----|
| 05 | ECN2008-023 | 04/02/08 | TC |



APPLICATION VIEW

TO SNAP LOCK IN A Ø6.5 [.256] ±0.08 [.003] HOLE
INTO A 0.8-1.6 [.032-.063] THICK PANEL

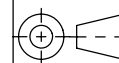


| PART NUMBER | MATERIAL |
|-------------------------------|---|
| WS-SE-A-4-01 WS-SE-A-4-109 | NYLON 6/6 UL94 V-2 (RMS-01) NYLON 6/6 UL94 V-2 HEAT STAB (RMS-109) |

INFORMATION CONTAINED IN THIS DOCUMENT IS CONFIDENTIAL TO
RICHCO INTERNATIONAL Co. Ltd. AND MAY NOT BE DISCLOSED OR
REPRODUCED IN WHOLE OR PART WITHOUT THEIR WRITTEN CONSENT.



ALL DIMENSIONS IN mm & [INCH]
GENERAL TOLERANCES ±0.25 [.010]
UNLESS OTHERWISE STATED
1 DECIMAL PLACE ±0.25 [.010]
2 DECIMAL PLACES ±0.10 [.004]
ANGULAR ±1°

THIRD
ANGLE

| | | | | | | | | | |
|--------------|----------|--|----------------|--------------------------------------|--|--------------------------|--|------------|--|
| MATERIAL: | | | | SEE TABLE | | COLOR: | | NATURAL | |
| DESCRIPTION: | | | | EDGE WIRE SADDLE CUPPED ARROWHEAD | | PART No: WS-SE-A-4-XX | | | |
| DRG No: | | | NPR No: | | | Mass:(g) | | SHEET SIZE | |
| 04-087 | | | 2004-118 & 349 | | | 0.7 | | A4 | |
| DRN | DATE | | CHKD | DATE | | SCALE | | SHEET No. | |
| OW | 20/04/04 | | NJB | 23/08/04 | | NTS | | 1 OF 1 | |

Mouser Electronics

Authorized Distributor

Click to View Pricing, Inventory, Delivery & Lifecycle Information:

Essentra:

WS-SE-A-4-01