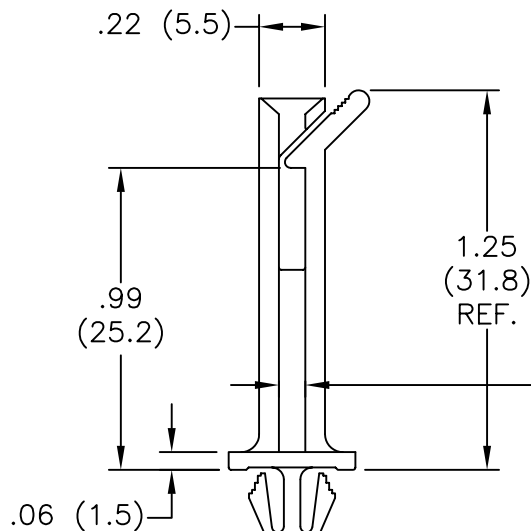
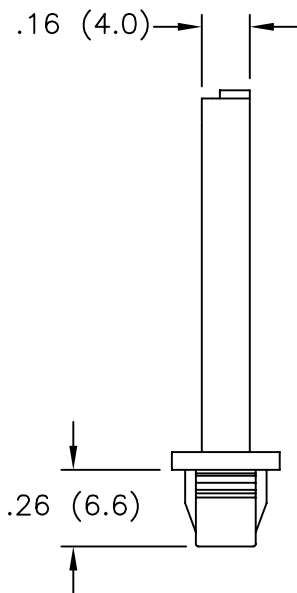
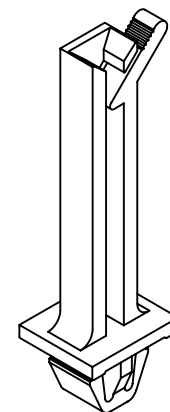
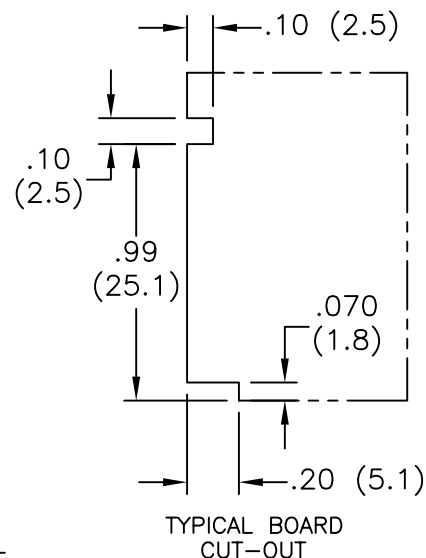


MOUNTING HOLE DIMENSIONS $\pm .003$ (± 0.08)



ACCOMODATES
A 1/16 (1.6)
NOMINAL THICK
BOARD

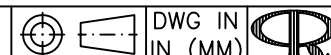
TO FIT IN A .047 TO .071
(1.2 TO 1.8) THICK PANEL



NOTES:

- MAT'L: NYLON 66 (RMS-01), NAT.
- FLAME RETARDANT NYLON (RMS-19),
AVAILABLE BY SPECIAL ORDER

TITLE: VERTICAL MOUNT CARD GUIDE-LATCHED (UK)



DWG IN
IN (MM)



TOLERANCES
UNLESS NOTED
.XX= $\pm .010$
.XXX= $\pm .005$
FRAC= $\pm 1/64$
ANG= $\pm 1^\circ$

FILE # VMCGLE

DWN: P.B.

APP:

FINAL

MAT'L: SEE NOTES

DT: 04-06-94 DT:

PART #

PRINT
TYPE

RE: RICHCO, INC.

RICHCO INC.
PO BOX 804238, CHICAGO, 60680
(773) 539-4060

VMCGLE-31M-01

CA

C	DIM .279 WAS .276, CHANGED FILE NO.	SM 11.29.01
B	TYPICAL BOARD CUT-OUT ADDED	PB 110394
A	P/N VMCGLE-31M-01 WAS VMCGLE	PB 100394
REV	DESCRIPTION	ENGR DATE

Mouser Electronics

Authorized Distributor

Click to View Pricing, Inventory, Delivery & Lifecycle Information:

Essentra:

[VMCGLE-31M-01](#)