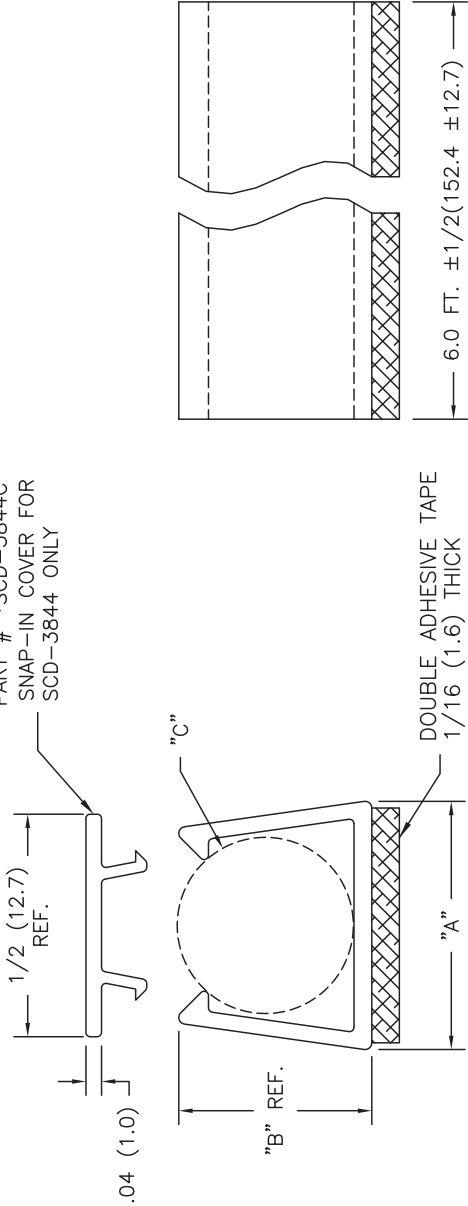


PART NO.		"A"	"B" REF.	"C" HOLDING DIA.	CABLE RECOMMENDATIONS	
SCD-1521	.30(7.6)	.25(6.4)	.156-.218(4.0-5.5)	COAX	COMPUTER	
SCD-2228	.36(9.1)	.29(6.6)	.218-.280(4.0-7.1)	RG58		
*SCD-2838	.47(11.9)	.38(9.8)	.280-.375(7.1-9.5)	RG59,62,6	9 LINE	
*SCD-3844	.55(14.0)	.43(10.9)	.375-.438(9.5-11.1)	TWINAX	9-15 LINE	
					25 LINE	

*PARTS AVAILABLE BY SPECIAL ORDER ONLY

PART # *SCD-3844C
SNAP-IN COVER FOR
SCD-3844 ONLY



- NOTES:
1. MATERIAL: RIGID PVC (RMS-32).
 2. COLOR: COMPUTER TAN.
 3. ACRYLIC ADHESIVE TAPE (RMS-15), WHITE LINER.
 4. MAX. OPR. TEMP.: 120° F.
 5. AVAILABLE IN CUSTOM CUT LENGTH UPON REQUEST.
 6. PACKAGING: 10 PIECES, 6 FT. LONG.

G	SEE CO 200604 FOR CHANGES	SK 12.01.10	TITLE: SINGLE CABLE DUCT		DWG IN INCHES	FINAL
F	RMS-32 WAS RMS-04 (ECN #465)	SM 09.19.02	FILE #	SCD		
E	ADDED RMS-04 TO MAT'L NOTE	SM 08.05.02	UNLESS NOTED			
D	ADDED NOTE 6.	SM 03.20.02	RE:	SEE NOTES		
C	ADDED NOTE 3.	SM 06.29.01				
B	FILE # WAS 05530	RG11/17/00				
A	DIM DOUBLE ADHESIVE TAPE WAS NOTE 5	PB 102794				
REV	DESCRIPTION	ENGR DATE				

DWN: R.S.	APP:	PART #	PRINT TYPE
DT: 05-03-93	DT:	SEE TABLE	CA
PO BOX 804238,CHICAGO,60680			
(773) 539-4060			

RICHCO, INC.

PO BOX 804238,CHICAGO,60680

(773) 539-4060

Mouser Electronics

Authorized Distributor

Click to View Pricing, Inventory, Delivery & Lifecycle Information:

Essentra:

[SCD-2228](#) [SCD-1521](#)