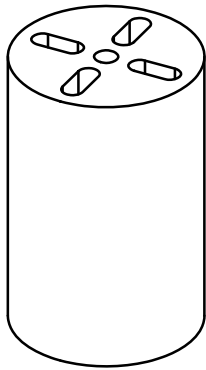
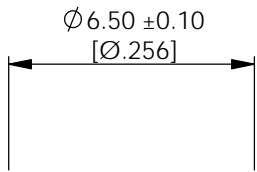
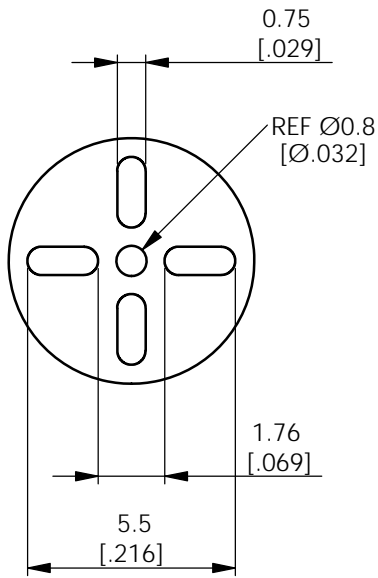
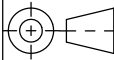


AVAILABLE BY SPECIAL ORDER NAFTA REGION ONLY

REV.	MODIFICATION.	DATE	DRN
01	NEW DWG	25/05/01	JPM
02	SCN04-093	25/05/01	OW
03	SCN04-096	25/05/01	OW
04	SCN04-100	14/10/04	OW
05	ECN05-021	26/01/05	OW
06	CO-2010553	09/02/09	OW
07	CO-2010973	17/08/10	SF
08	CO-2011241	06/02/12	SF



ALTERNATE UNITS FOR REFERENCE ONLY

INFORMATION CONTAINED IN THIS DOCUMENT IS CONFIDENTIAL TO RICHCO INTERNATIONAL Co. Ltd. AND MAY NOT BE DISCLOSED OR REPRODUCED IN WHOLE OR PART WITHOUT THEIR WRITTEN CONSENT.									
RICHCO, INC. WWW.RICHCO-INC.COM				ALL DIMENSIONS IN mm GENERAL TOLERANCES ± 0.25 UNLESS OTHERWISE STATED 1 DECIMAL PLACE \pm 2 DECIMAL PLACES \pm ANGULAR $\pm 1^\circ$				THIRD ANGLE 	
MATERIAL: PVC(RMS-388)						COLOUR: BLACK			
DESCRIPTION: LED MOUNTS						PART No: LEDM-3-XX			
DRG No: 786-9020			NPR No:			SHEET SIZE A4			
DRN OW	DATE 14/10/04		CHKD NJB	DATE 14/10/04		SCALE NTS	SHEET No. 1 OF 1		

NOTES:
1) FOR USE WITH 5mm, T-1 3/4 LEDS.
2) PARTS AVAILABLE IN 1MM INCREMENTS.
3) SPECIAL LENGTHS AVAILABLE BY SPECIAL ORDER.

PART No.	LENGTH
LEDM-3-02 - LEDM-3-30	2.0mm - 30mm

Mouser Electronics

Authorized Distributor

Click to View Pricing, Inventory, Delivery & Lifecycle Information:

[Essentra:](#)

[LEDM-3-06](#) [LEDM-3-03](#) [LEDM-3-02](#) [LEDM-3-04](#) [LEDM-3-08](#) [LEDM-3-09](#) [LEDM-3-10](#) [LEDM-3-13](#) [LEDM-3-21](#)