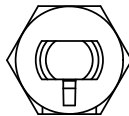
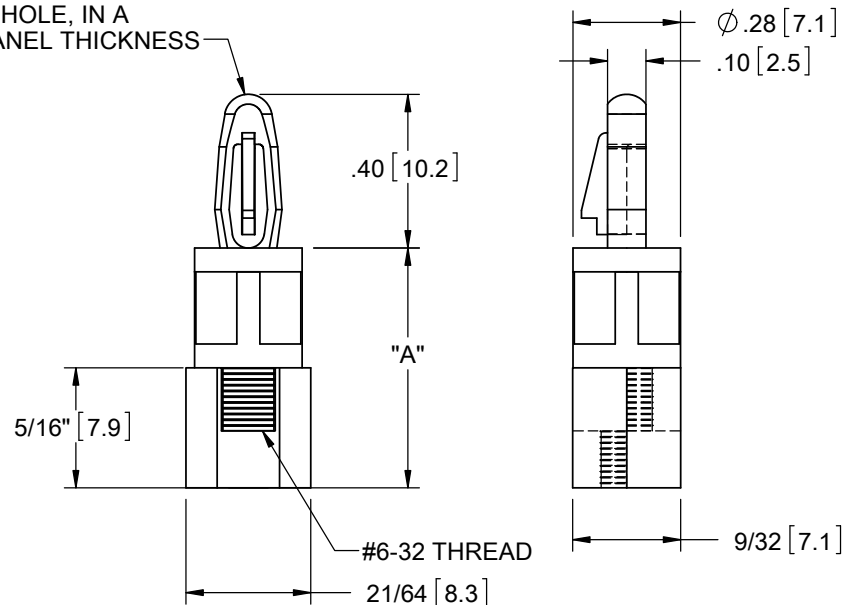


MATERIAL: NYLON 6/6 UL 94 V-2 (RMS-01) COLOR: NATURAL PART NO.	MATERIAL: NYLON 6/6 UL 94 V-2 (RMS-19) COLOR: NATURAL PART NO.	DIM. "A" ±.015 [0.4]
LCBS-TF-6-01	LCBS-TF-6-19	3/8 [9.5]
LCBS-TF-8-01	LCBS-TF-8-19	1/2 [12.7]
LCBS-TF-10-01	LCBS-TF-10-19	5/8 [15.9]
LCBS-TF-12-01	LCBS-TF-12-19	3/4 [19.1]
LCBS-TF-14-01	LCBS-TF-14-19	7/8 [22.2]
LCBS-TF-16-01	LCBS-TF-16-19	1 [25.4]





TO SNAP-LOCK IN A .156.003  
[4±0.08] DIA. HOLE, IN A  
.062 [1.57] PANEL THICKNESS



#### NOTES:

- M4 THREAD AVAILABLE BY SPECIAL ORDER ONLY  
TO ORDER, ADD "-M4" TO PART NO.  
EXAMPLE: LCBSTF-M4-X-XX
- ALTERNATE UNITS FOR REFERENCE ONLY.

TO ORDER, ADD -M4 TO PART NO. EXAMPLE: LCBSTF-M4-X-XX. 2. ALTERNATE UNITS FOR REFERENCE ONLY.			TITLE: LCBS, THREADED FEMALE						DWG IN IN [MM]			
			CREATED USING SOLIDWORKS		FILE #: LCBS-TF		DWN: SK		APP: RT		FINAL	
			TOLERANCES UNLESS NOTED		SHEET: 1 OF 1		SHEET SIZE: A		DT: 11/20/06		CHKD: SJ	
			.XX=±.010		RE: RICHCO, INC.		RICHCO, INC. ENG@RICHCO-INC.COM (773) 539-4060		PART #  SEE TABLE		PRINT TYPE  CA	
			.XXX=±.005									
			FRAC.=±1/64									
			ANG.=±1°									
REV.			DESCRIPTION		ENGR.		DATE					
E			SEE CO 200773 FOR CHANGES		SK		04.30.12					
D			REDRAWN, SEE ECN #1208 FOR CHANGES		SK		11/29/06					
-			SEE ENGINEERING FOR REV A-C		-		-----					

# Mouser Electronics

Authorized Distributor

Click to View Pricing, Inventory, Delivery & Lifecycle Information:

Essentra:

[LCBS-TF-6-01](#) [LCBS-TF-12-01](#) [LCBS-TF-10-01](#) [LCBS-TF-14-01](#) [LCBS-TF-16-01](#) [LCBS-TF-8-01](#)