

FIG. 1

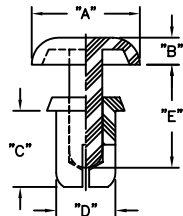
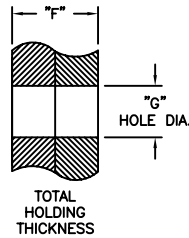


FIG. 2



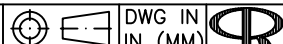
NOTES:

1. MATERIAL: NYLON 6, (RMS-52)
COLOR: BLACK & WHITE STANDARD.
ADD "B" FOR BLACK AND "W" FOR WHITE ON THE
END OF PART NUMBER
2. MATERIAL: NYLON 66/6, UL94 V-0, (RMS-103)
AVAILABLE BY SPECIAL ORDER.
TO ORDER USE P/N: SRVO-XXXX
COLOR: BLACK.
ALSO AVAILABLE IN COLOR WHITE BY SPECIAL ORDER.
TO ORDER ADD "W" TO THE END OF PART NO.
3. GREEN (GN), YELLOW (YL), RED (RD), BLUE (BL),
AND GRAY (GY), AVAILABLE BY SPECIAL ORDER ONLY.

MAT'L: NYLON 6 (RMS-52) PART NO.	HOLE DIA. "G"	EXTRACTION FORCE LB (KG)	THICKNESS "F"	"A" ±.008 (±0.2)	"B" ±.008 (±0.2)	"C" ±.012 (±0.3)	"D"	"E" ±.012 (±0.3)	FIG. NO.
SR-2024	.083-.087 (2.1-2.2)	6.6 MIN. (3 MIN)	.024-.047 (0.6-1.2)	.165 (4.2)	.047 (1.2)	.09 (2.4)	.079 (2.0)	.11 (2.8)	1
SR-2032			.051-.079 (1.3-2.0)			.13 (3.2)		.15 (3.8)	
SR-2040			.083-.110 (2.1-2.8)			.16 (4.0)		.22 (5.5)	
SR-2048			.114-.142 (2.9-3.6)			.19 (4.8)		.28 (7.2)	
SR-2056			.146-.173 (3.7-4.4)			.22 (5.6)		.28 (7.1)	
SR-2064	.106-.110 (2.7-2.8)	11.0 MIN. (5 MIN.)	.173-.197 (4.4-5.0)	.197 (5.0)	.055 (1.4)	.25 (6.4)	.102 (2.6)	.28 (7.1)	1
SR-2632			.039-.079 (1.0-2.0)			.13 (3.2)		.18 (4.5)	
SR-2642			.079-.118 (2.0-3.0)			.17 (4.2)		.24 (6.1)	
SR-2648			.106-.142 (2.7-3.6)			.19 (4.8)		.31 (7.8)	
SR-2655			.134-.169 (3.4-4.3)			.22 (5.5)		.28 (7.1)	
SR-2664	.122-.126 (3.1-3.2)	17.6 MIN. (8 MIN.)	.169-.205 (4.3-5.2)	.252 (6.4)	.063 (1.6)	.25 (6.4)	.118 (3.0)	.31 (7.8)	1
SR-2672			.201-.236 (5.1-6.0)			.28 (7.2)		.43 (11.0)	
SR-3035			.039-.079 (1.0-2.0)			.14 (3.5)		.20 (5.1)	
SR-3045			.079-.118 (2.0-3.0)			.18 (4.5)		.24 (6.1)	
SR-3055			.118-.158 (3.0-4.0)			.22 (5.5)		.28 (7.1)	
SR-3065	.142-.146 (3.6-3.7)	26.4 MIN. (12 MIN.)	.158-.197 (4.0-5.0)	.252 (6.4)	.063 (1.6)	.26 (6.5)	.138 (3.5)	.30 (7.5)	2
SR-3075			.197-.236 (5.0-6.0)			.30 (7.5)		.35 (9.0)	
SR-3080			.217-.256 (5.5-6.5)			.31 (8.0)		.36 (9.1)	
SR-3090			.256-.295 (6.5-7.5)			.35 (9.0)		.43 (11.0)	
SR-3100			.295-.335 (7.5-8.5)			.39 (10.0)		.55 (14.0)	
SR-3535	.161-.165 (4.1-4.2)	44.0 MIN. (20 MIN.)	.047-.083 (1.2-2.1)	.315 (8.0)	.071 (1.8)	.14 (3.5)	.158 (4.0)	.20 (5.1)	2
SR-3545			.083-.118 (2.1-3.0)			.18 (4.5)		.24 (6.1)	
SR-3550			.106-.142 (2.7-3.6)			.20 (5.0)		.28 (7.1)	
SR-3555			.118-.158 (3.0-4.0)			.22 (5.5)		.35 (9.0)	
SR-3560			.146-.181 (3.7-4.6)			.24 (6.0)		.43 (11.0)	
SR-3570	.201-.205 (5.1-5.2)	55.0 MIN. (25 MIN.)	.177-.217 (4.5-5.5)	.354 (9.0)	.087 (2.2)	.28 (7.0)	.197 (5.0)	.35 (9.0)	2
SR-3580			.217-.256 (5.5-6.5)			.31 (8.0)		.47 (12.0)	
SR-4050			.098-.138 (2.5-3.5)			.20 (5.0)		.26 (6.5)	
SR-4060			.138-.177 (3.5-4.5)			.24 (6.0)		.33 (8.5)	
SR-4070			.177-.217 (4.5-5.5)			.28 (7.0)		.41 (10.5)	
SR-4080	.240-.244 (6.1-6.2)	66.0 MIN. (30 MIN.)	.217-.256 (5.5-6.5)	.472 (12.0)	.098 (2.5)	.31 (8.0)	.236 (6.0)	.35 (9.0)	2
SR-4090			.256-.295 (6.5-7.5)			.35 (9.0)		.39 (10.0)	
SR-4100			.295-.335 (7.5-8.5)			.41 (10.5)		.47 (12.0)	
SR-4120			.354-.413 (9.0-10.5)			.47 (12.0)		.55 (14.0)	
SR-5045			.059-.098 (1.5-2.5)			.18 (4.5)		.26 (6.5)	
SR-5055	.201-.205 (5.1-5.2)	55.0 MIN. (25 MIN.)	.098-.138 (2.5-3.5)	.354 (9.0)	.087 (2.2)	.22 (5.5)	.197 (5.0)	.26 (6.5)	2
SR-5065			.138-.177 (3.5-4.5)			.26 (6.5)		.33 (8.5)	
SR-5075			.177-.217 (4.5-5.5)			.30 (7.5)		.41 (10.5)	
SR-5085			.217-.256 (5.5-6.5)			.33 (8.5)		.47 (12.0)	
SR-5095			.256-.295 (6.5-7.5)			.37 (9.5)		.47 (12.0)	
SR-5105	.240-.244 (6.1-6.2)	66.0 MIN. (30 MIN.)	.295-.335 (7.5-8.5)	.472 (12.0)	.098 (2.5)	.41 (10.5)	.236 (6.0)	.47 (12.0)	2
SR-6060			.098-.158 (2.5-4.0)			.24 (6.0)		.35 (9.0)	
SR-6080			.138-.217 (3.5-5.5)			.31 (8.0)		.39 (10.0)	

TITLE:

SNAP-RIVETS



P	SEE ECN #1327 FOR CHANGES	SK 05.23.07
O	SEE ECN #1260 FOR CHANGES	SK 12.06.06
-	SEE ENGINEERING FOR REV. A-N	-
REV	DESCRIPTION	ENGR DATE

TOLERANCES UNLESS NOTED .XX=±.010 .XXX=±.005 FRAC=1/64 ANG=1°	FILE # SR	DWN: J.B.	APP:	FINAL	PRINT TYPE CA
	MAT'L: SEE NOTES	DT: 02/28/97	DT:	PART #	
	RE: RICHCO, INC.	RICHCO INC. PO BOX 804238, CHICAGO, 60680 (773) 539-4060		SEE CHART	

Mouser Electronics

Authorized Distributor

Click to View Pricing, Inventory, Delivery & Lifecycle Information:

Essentra:

[SR-3045W](#) [SRVO-4080B](#) [SR-3550B](#) [SR-2672B](#) [SR-6080B](#) [SR-3100W](#) [SRVO-2642B](#) [SR-2032B](#) [SR-2655W](#) [SR-3230B](#) [SRVO-2672B](#) [SR-2048W](#) [SR-4060B](#) [SRVO-3555B](#) [SR-4100B](#) [SRVO-3560B](#) [SR-2064B](#) [SR-4080W](#) [SR-3055W](#) [SRVO-2664B](#) [SR-6060B](#) [SR-4070W](#)