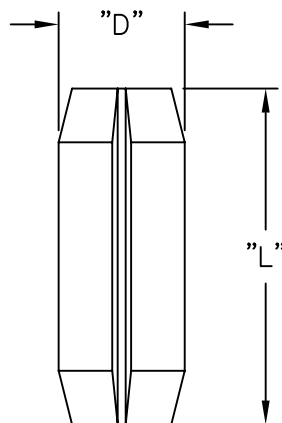


PART NO.	DIM. "L"	DIM. "D"
RRP-250	1/4 (6.4)	3/32 (2.4)
RRP-312	5/16 (8.0)	3/32 (2.4)
RRP-375	3/8 (9.5)	1/8 (3.2)



ROLL PINS:(RRP) FOR USE WITH THE FOLLOWING
CARD INSERTERS/EXTRACTORS:

RRP-250	RRP-312	RRP-375
R1001-062	R11073-062	R1209-062
R1002-093	R11073-093	R1209-093
R1003-125	R11073-125	R1209-125
R1107-062	R1107310-062	
R110710-062	R1107310-093	
	R1107310-125	

NOTES:

- MAT'L: PASSIVATED STAINLESS STEEL
SPRING PINS PER MIL-P-10791 (RMS-224)

			TITLE: ROUND ROLL PINS					DWG IN IN (MM)	
			TOLERANCES UNLESS NOTED .XX=±.010 .XXX=±.005 FRAC=1/64 ANG=1°	FILE # RRP	DWN: P.B.	APP:	FINAL		
C	SEE ECN #1289 FOR CHANGES	SK 02.15.07	MAT'L: SEE NOTES			DT: 03-10-95	DT:	PART #	
B	CHANGED FILE NO. AND TITLE BLOCK	SM 05.16.01	RE: RICHCO, INC.			RICHCO INC.		SEE TABLE	
A	GIVEN PART NUMBER	JB 09.05.95				PO BOX 804238, CHICAGO, 60680			
REV	DESCRIPTION	ENGR DATE				(773) 539-4060		PRINT TYPE CA	

Mouser Electronics

Authorized Distributor

Click to View Pricing, Inventory, Delivery & Lifecycle Information:

[Essentra:](#)

[RRP-250](#) [RRP-312](#) [RRP-375](#)