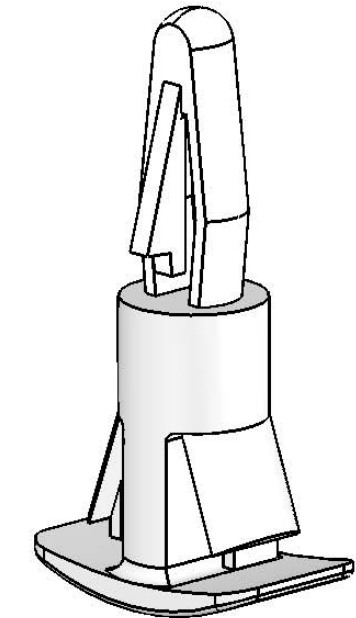



MATL: NYLON 6/6 RMS-01* COLOUR: NATURAL	"A" STANDOFF HEIGHT
RLCBSC-5-01	5 [.20]
RLCBSC-6-01	6 [.24]
RLCBSC-8-01	8 [.31]
RLCBSC-10-01	10 [.39]
RLCBSC-12-01	12 [.47]
RLCBSC-14-01	14 [.55]
*AVAILABLE IN UL94 V0 BY SPECIAL ORDER. TO ORDER REPLACE -01 WITH -19.	



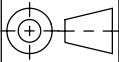
ALTERNATE UNITS FOR REFERENCE ONLY

INFORMATION CONTAINED IN THIS DOCUMENT IS CONFIDENTIAL TO RICHCO INTERNATIONAL Co. Ltd. AND MAY NOT BE DISCLOSED OR REPRODUCED IN WHOLE OR PART WITHOUT THEIR WRITTEN CONSENT.



METRIC PRIMARY UNITS:mm  
IMPERIAL SECONDARY UNITS:[inches]  
GENERAL TOLERANCES ±0.25 [0.010]  
UNLESS OTHERWISE STATED  
1 DECIMAL PLACE ±  
2 DECIMAL PLACES ±  
ANGULAR ±1°

THIRD  
ANGLE



MATERIAL:  
NYLON 6/6 UL94-V2 (RMS-01)

COLOUR:  
NATURAL

DESCRIPTION:  
REVERSE LOCKING CIRCUIT BOARD SUPPORT

PART No:  
SEE TABLE

DRG No:  
08-107

NPR No:  
GB08-0058

Mass:(g)  
0.2-0.4

SHEET SIZE  
A4

DRN  
MT

DATE  
09/09/08

CHKD  
JK

DATE  
15/09/08

SCALE  
NTS

SHEET No.  
1 OF 1

FORM No. 0145/02

# Mouser Electronics

Authorized Distributor

Click to View Pricing, Inventory, Delivery & Lifecycle Information:

Essentra:

[RLCBSC-10-01](#) [RLCBSC-12-01](#) [RLCBSC-14-01](#) [RLCBSC-5-01](#) [RLCBSC-6-01](#) [RLCBSC-8-01](#)