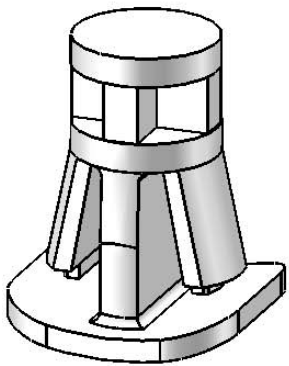
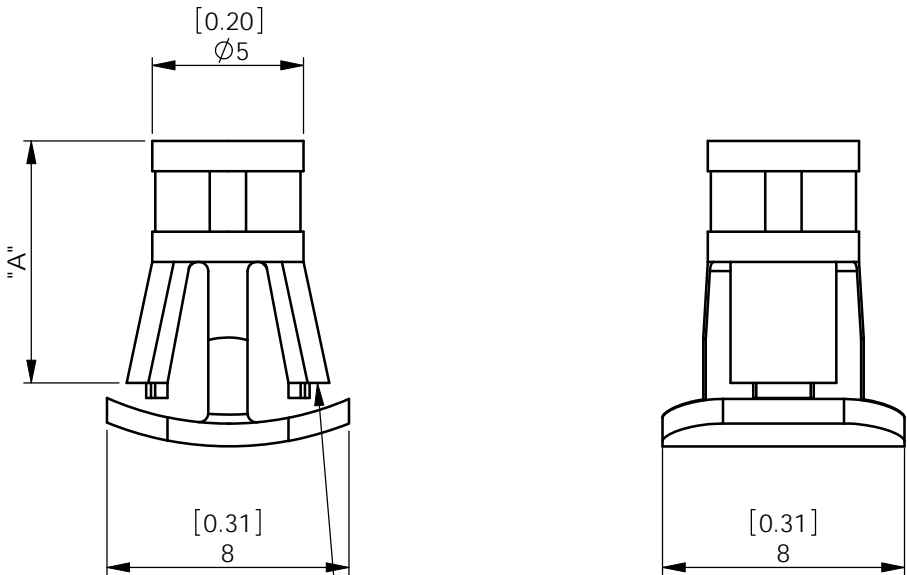



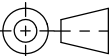
REV.	MODIFICATION.	DATE	DRN
A 01	Preliminary Drawing Production Release	09/09/08 15/09/08	MT MT



TO FIT IN A Ø5.5mm [0.22] HOLE,  
0.5mm [0.02]-1.0mm [0.04] THICK PANEL.

MATL: NYLON 6/6 RMS-01* COLOUR: NATURAL	"A" STANDOFF HEIGHT
RLCBSB-5-01	5 [0.20]
RLCBSB-6-01	6 [0.24]
RLCBSB-8-01	8 [0.31]
RLCBSB-10-01	10 [0.39]
RLCBSB-12-01	12 [0.47]
RLCBSB-14-01	14 [0.55]
*AVAILABLE IN UL94 V0 BY SPECIAL ORDER. TO ORDER REPLACE -01 WITH -19.	

INFORMATION CONTAINED IN THIS DOCUMENT IS CONFIDENTIAL TO  
RICHCO INTERNATIONAL Co. Ltd. AND MAY NOT BE DISCLOSED OR  
REPRODUCED IN WHOLE OR PART WITHOUT THEIR WRITTEN CONSENT.

 <b>Richco®</b>		METRIC PRIMARY UNITS:mm IMPERIAL SECONDARY UNITS:[inches] GENERAL TOLERANCES ±0.25 [0.010] UNLESS OTHERWISE STATED 1 DECIMAL PLACE ± 2 DECIMAL PLACES ± ANGULAR ±1°		THIRD ANGLE 	
MATERIAL: NYLON 6/6 (RMS-01)				COLOUR: NATURAL	
DESCRIPTION: REVERSE LOCKING CIRCUIT BOARD SUPPORT				PART No: SEE TABLE	
DRG No: 08-090		NPR No: GB08-0058		Mass:(g) 0.2-0.4	SHEET SIZE A4
DRN MT	DATE 09/09/08	CHKD JK	DATE 15/09/08	SCALE NTS	SHEET No. 1 OF 1

# Mouser Electronics

Authorized Distributor

Click to View Pricing, Inventory, Delivery & Lifecycle Information:

Essentra:

[RLCBSB-10-01](#) [RLCBSB-12-01](#) [RLCBSB-14-01](#) [RLCBSB-5-01](#) [RLCBSB-6-01](#) [RLCBSB-8-01](#)