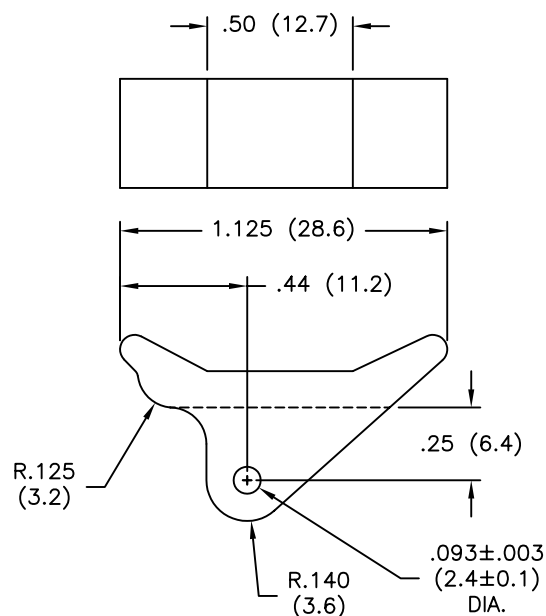
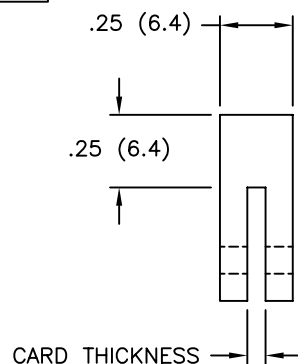
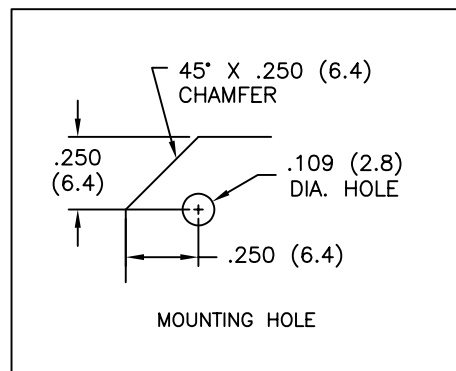

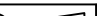



PART NO.	CARD THICKNESS
RCP-26	1/16 (1.6)
RCP-29	3/32 (2.4)



# NOTES:

1. MATERIAL: NYLON 6/6 (RMS-48).
  2. COLOR: WHITE.
  3. INSTALLATION ROLL PIN NO. RRP-250, MATERIAL: PASSIVATED STAINLESS STEEL PER MIL-P-10971. COLOR: SILVER.
- 3/32 (2.4) DIA. X 1/4 (6.4) LONG, FURNISHED WITH EJECTORS.

FURNISHED WITH EJECTORS.			TITLE: CARD EJECTORS				 		DWG IN IN (MM)			
D	ADDED MOUNTING HOLE DETAIL, ECN #659	SM 07.02.03	TOLERANCES UNLESS NOTED .XX=±.010 .XXX=±.005 FRAC=±1/64 ANG=±1°	FILE # RCP		DWN: P.B.		APP:		FINAL		
C	ADDED NOTE 3 (ECN #472)	SM 09.26.02		MAT'L: SEE NOTES		DT: 04-07-94		DT:		PART #		PRINT TYPE CA
B	CHANGED FILE NUMBER	SM 05.15.01	RE: RICHCO, INC.		RICHCO INC. PO BOX 804238, CHICAGO, 60680 (773) 539-4060		SEE TABLE					
A	MAT'L COLOR WHITE WAS NATURAL	J.L. 3.17.99										
REV	DESCRIPTION	ENGR DATE										

# Mouser Electronics

Authorized Distributor

Click to View Pricing, Inventory, Delivery & Lifecycle Information:

[Essentra:](#)

[RCP-26](#)