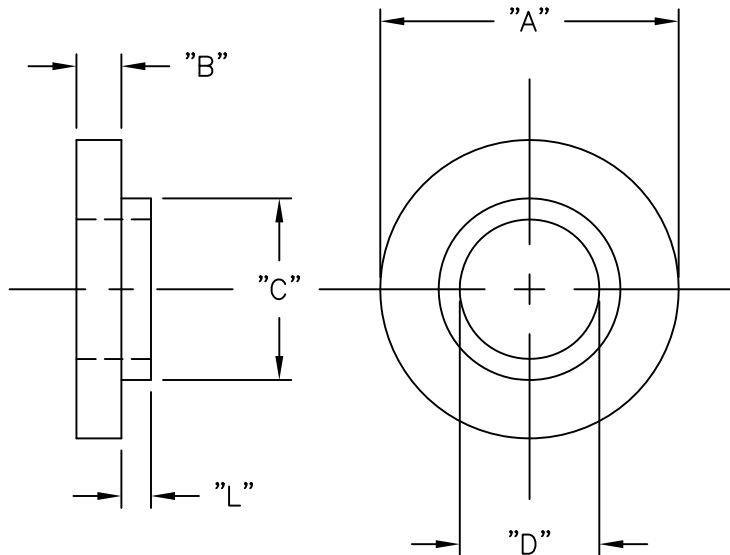




PART NO.	SCREW SIZE	APP. METRIC EQUIVALENT	"L" ±.010	"A" ±.010	"B" ±.010	"C" ±.005	"D" ±.005
MNI-HT-4-2	#4	M3	.031 (0.8)	.280 (7.1)	.047 (1.2)	.145 (3.7)	.118 (3.0)
MNI-HT-4-220 *			.032 (0.8)	.215 (5.5)	.040 (1.0)	.135 (3.4)	.116 (2.9)
MNI-HT-10-6	#10	M4.5	.093 (2.4)	.399 (10.1)	.063 (1.6)	.260 (6.6)	.200 (5.1)

* DESIGN ALLOWS INSERTION IN THE TAB OF A TO-220 TRANSISTOR



NOTES:

1. MATERIAL: 40% GLASS FILLED.
POLYPHENYLENE SULFIDE, (RMS-50) UL94 V-0.
2. COLOR: BLACK.

2. COLOR: BLACK.			TITLE: MOLDED NYLON INSULATOR, HIGH TEMPERATURE				 		DWG IN IN (MM)	
D	SEE CO 200773 FOR CHANGES	SK 04.30.12	TOLERANCES UNLESS NOTED .XX=±.010 .XXX=±.005 FRAC=±1/64 ANG=±1°	FILE #	MNI-HT	DWN: J.B.	APP:	FINAL		
C	SEE ECN #892 FOR CHANGES	SM 12.14.04		MAT'L:	SEE NOTES	DT: 01-17-96	DT:	PART #	PRINT	
B	UPDATED TABLE AND ADDED "SULFIDE" TO NOTES	SM 02.25.02		RE:	RICHCO, INC.	RICHCO INC. PO BOX 804238,CHICAGO,60680 (773) 539-4060			SEE TABLE	TYPE
A	CHANGED FILE NO. AND TITLE BLOCK	SM 12.04.01								
REV	DESCRIPTION	ENGR DATE								

Mouser Electronics

Authorized Distributor

Click to View Pricing, Inventory, Delivery & Lifecycle Information:

Essentra:

[MNI-HT-10-6](#) [MNI-HT-4-2](#) [MNI-HT-4-220](#)