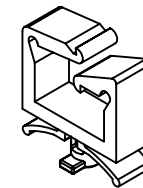
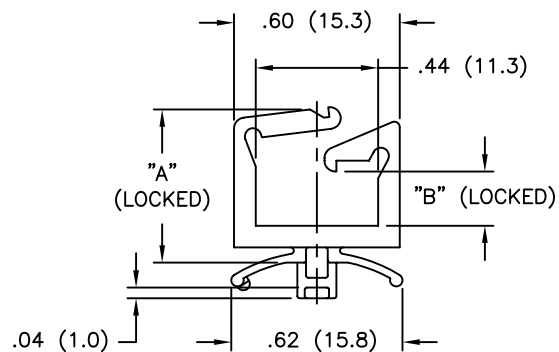
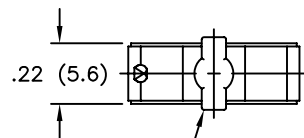
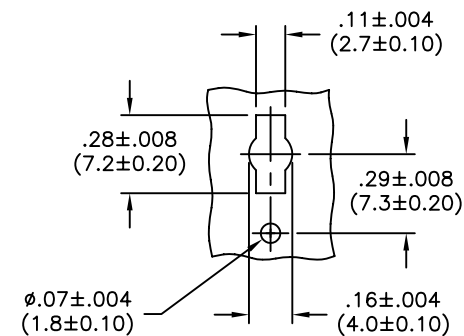


PART NO.	DIM. "A"	DIM. "B"
LWS-9-1	.51 (13.0)	.15 (3.8)
LWS-9-2	.71 (18.0)	.39 (9.8)
LWS-9-3	1.07 (27.2)	.75 (19.0)
LWS-9-4	1.38 (35.1)	1.06 (26.8)





MOUNTING HOLE DETAIL



PART TO FIT THE HOLE DETAIL
IN A .031-.063 (0.80-1.60)
PANEL THICK

NOTES:

1. MATERIAL: NYLON 6/6 (RMS-01), UL94 V-2
FLAME RETARDANT, NYLON (RMS-19), UL94 V-0,
AVAILABLE BY SPECIAL ORDER ONLY.
2. COLOR: NATURAL.
3. ALL DIMENSIONS ARE REFERENCE.

2. COLOR: NATURAL.			TITLE: LOCKING WIRE SADDLE, (QUARTER-TURN BASE)						DWG IN IN (MM)			
3. ALL DIMENSIONS ARE REFERENCE.									IN			
			TOLERANCES UNLESS NOTED		FILE # LWS-9		DWN: SM		APP:		FINAL	
			.XX=±.010		MAT'L: SEE NOTES		DT: 03/06/02		DT:		PART #	
			.XXX=±.005		RE: RICHCO, INC.		RICHCO INC.		SEE TABLE		PRINT TYPE	
			FRAC=±1/64				PO BOX 804238, CHICAGO, 60680				CA	
			ANG=±1°				(773) 539-4060					
A REDRAWN FROM RICHCO UK PRINT (REV."B")			SM 03.06.02									
REV DESCRIPTION			ENGR DATE									

Mouser Electronics

Authorized Distributor

Click to View Pricing, Inventory, Delivery & Lifecycle Information:

Essentra:

[LWS-9-1-01](#) [LWS-9-2-01](#) [LWS-9-3-01](#) [LWS-9-4-01](#)