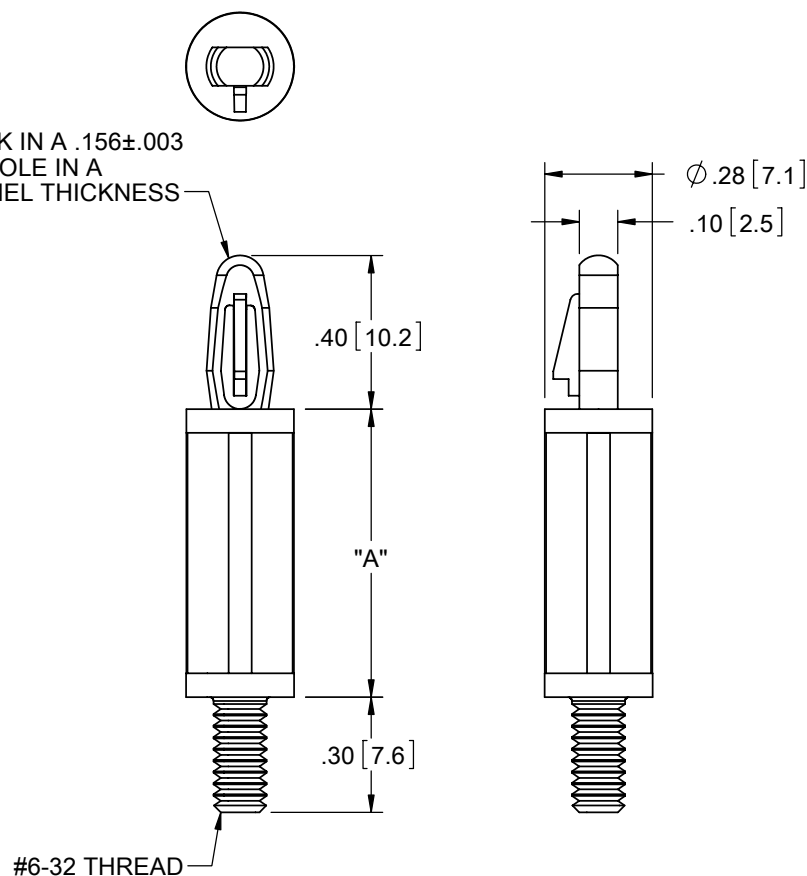
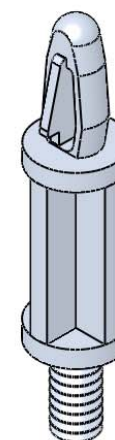


TO-SNAP LOCK IN A .156±.003
[4±0.08] DIA. HOLE IN A
.062 [1.57] PANEL THICKNESS






MATERIAL: NYLON 6/6 UL 94 V-2 (RMS-01) COLOR: NATURAL PART NO.	MATERIAL: NYLON 6/6 UL 94 V-2 (RMS-19) COLOR: NATURAL PART NO.	DIM. "A"±.015 [0.4]
LCBS-TM-4-01	LCBS-TM-4-19	1/4 [6.4]
LCBS-TM-6-01	LCBS-TM-6-19	3/8 [9.5]
LCBS-TM-8-01	LCBS-TM-8-19	1/2 [12.7]
LCBS-TM-10-01	LCBS-TM-10-19	5/8 [15.9]
LCBS-TM-12-01	LCBS-TM-12-19	3/4 [19.1]
LCBS-TM-14-01	LCBS-TM-14-19	7/8 [22.2]
LCBS-TM-16-01	LCBS-TM-16-19	1 [25.4]



NOTES:

- M4 THREAD AVAILABLE BY SPECIAL ORDER ONLY.
TO ORDER, ADD "-M4" TO PART NO.
EXAMPLE: LCBS-TN-M4-X-XX"
- ALTERNATE UNITS FOR REFERENCE ONLY.

E	REDRAWN, SEE ECN #1208 FOR CHANGES	SK	11/29/06
-	SEE ENGINEERING FOR REV A-D	-	-----
REV.	DESCRIPTION	ENGR.	DATE

TITLE: LCBS, THREADED MALE						DWG IN IN [MM]	
CREATED USING SOLIDWORKS	FILE #: LCBS-TM		DWN: SK	APP: RT		FINAL	
TOLERANCES UNLESS NOTED XX=±.010 .XXX=±.005 FRAC.=±1/64 ANG.=±1°	SHEET: 1 OF 1	SHEET SIZE: A	DT: 11/20/06	CHKD: SJ	PART #	PRINT TYPE	
RE: RICHCO, INC.		RICHCO, INC. ENG@RICHCO-INC.COM (773) 539-4060			SEE TABLE	CA	

Mouser Electronics

Authorized Distributor

Click to View Pricing, Inventory, Delivery & Lifecycle Information:

Essentra:

[LCBS-TM-10-01](#) [LCBS-TM-10-19](#) [LCBS-TM-12-01](#) [LCBS-TM-12-19](#) [LCBS-TM-14-01](#) [LCBS-TM-14-19](#) [LCBS-TM-16-01](#) [LCBS-TM-16-19](#) [LCBS-TM-4-01](#) [LCBS-TM-4-19](#) [LCBS-TM-6-01](#) [LCBS-TM-6-19](#) [LCBS-TM-8-01](#) [LCBS-TM-8-19](#)