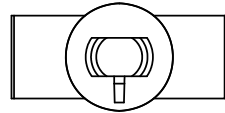
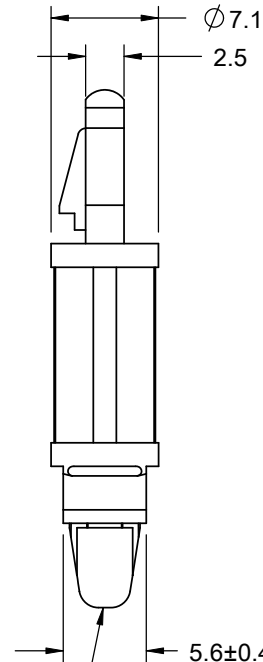
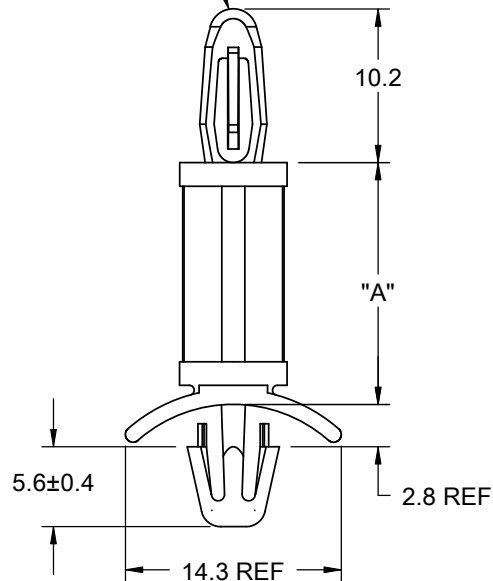


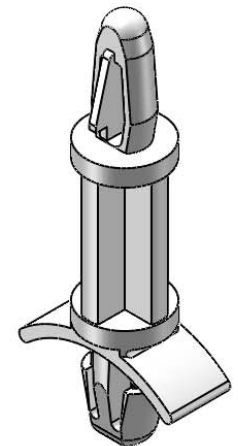
AVAILABLE BY SPECIAL ORDER ONLY



TO SNAP-LOCK IN A 4 ± 0.08 DIA. HOLE,
IN A 1.57 THICK BOARD



TO SNAP-LOCK IN A 4.75 ± 0.08 DIA. HOLE,
IN A 0.79-1.98 PANEL THICKNESS






PART NO.	DIM. "A"±0.4
LCBS-6M-01	6
LCBS-8M-01	8
LCBS-10M-01	10
LCBS-12M-01	12
LCBS-14M-01	14
LCBS-16M-01	16

NOTES:

1. MATERIAL: NYLON 6/6 UL 94 V-2 (RMS-01).
MATERIAL: NYLON 6/6 UL 94 V-0 (RMS-19),
AVAILABLE BY SPECIAL ORDER. TO ORDER
REPLACE "-01" WITH "-19".
2. COLOR: NATURAL.
BLUE AVAILABLE BY SPECIAL ORDER ONLY.

E	SEE CO 200290 FOR CHANGES	SK	12/04/08
D	REDRAWN, SEE ECN #1208 FOR CHANGES	SK	11/29/06
-	SEE ENGINEERING FOR REV A-C	---	-----
REV.	DESCRIPTION	ENGR.	DATE

TITLE: LOCKING CIRCUIT BOARD SUPPORT (METRIC)							DWG IN mm	
CREATED USING SOLIDWORKS	FILE #: LCBS-M		DWN: SK	APP: RT	FINAL			
GENERAL TOLERANCE UNLESS NOTED ±0.25 ANG. ±1°	SHEET: 1 OF 1	SHEET SIZE: A	DT: 11/16/06	CHKD: SJ	PART # SEE TABLE		PRINT TYPE EA	
	RE: RICHCO, INC.		RICHCO, INC. ENG@RICHCO-INC.COM (773) 539-4060					

Mouser Electronics

Authorized Distributor

Click to View Pricing, Inventory, Delivery & Lifecycle Information:

Essentra:

[LCBS-10M-01](#) [LCBS-6M-01](#)