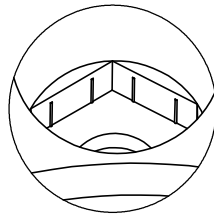
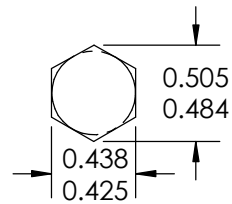


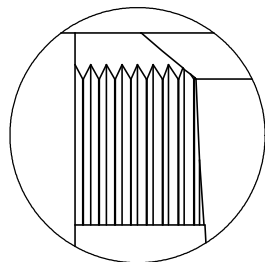
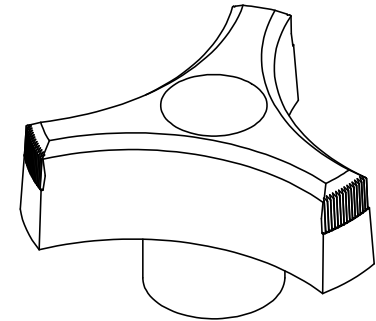
DETAIL A
SCALE 6 : 1



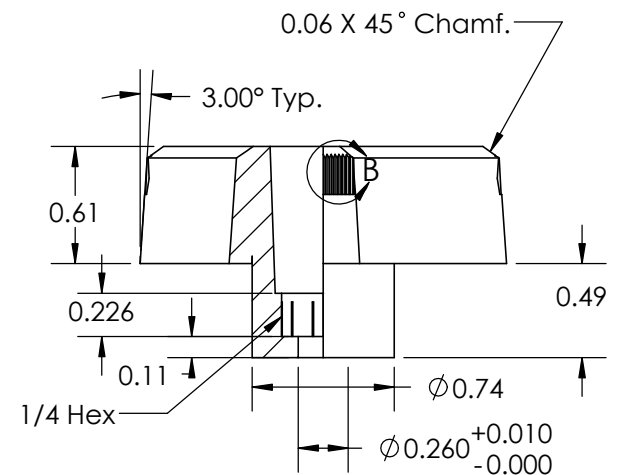
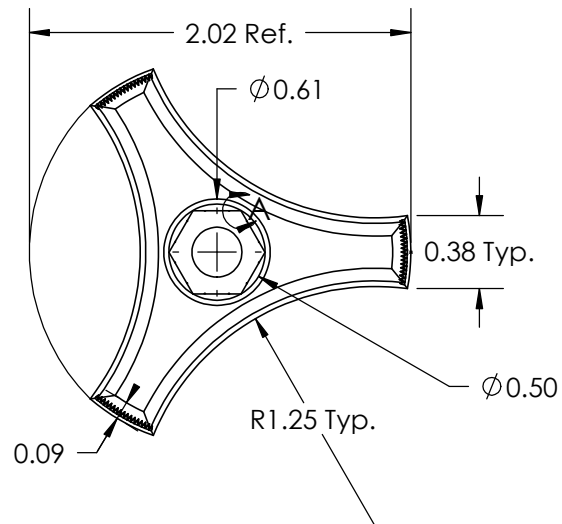
DETAIL
SCALE 2 : 1




HEX NUT



DETAIL B
SCALE 4 : 1



FOR CUSTOMER APPROVAL ONLY					REV	BY	DATE	COMMENT	DIMENSIONS ARE IN INCHES TOLERANCES FRACTIONAL ± TWO PLACE DECIMAL ± 0.03 THREE PLACE DECIMAL ± 0.010 UNLESS OTHERWISE NOTED		DRAWN		JMR		<div> INNOVATIVE COMPONENTS</div> <div>PART NAME</div> <div>2" royal 3-prong knob with hex hole for pushin 1/4"</div>			
NAME:					0	JMR	10/16/07	RELEASE DATE			APPROVED		JMR					
					1	JSR	08/13/10	Changed Hex Specification			DATE		10/16/2007					
TITLE:					2	MRO	07/30/13	Added Hole Dimensions			COMMENTS MIN. TORQUE N/A in.-lbs.							
DATE:									KNOB MATERIAL		Polypropylene, Black		INSERT MATERIAL					
SIGNATURE:					<div>PROPRIETARY AND CONFIDENTIAL</div> <div>THE INFORMATION CONTAINED IN THIS DRAWING IS THE SOLE PROPERTY OF INNOVATIVE COMPONENTS. ANY REPRODUCTION IN PART OR AS A WHOLE WITHOUT THE WRITTEN PERMISSION OF INNOVATIVE COMPONENTS IS PROHIBITED.</div>				KNOB FINISH		Textured		INSERT FINISH					
									INSERT PART NUMBER									
											PART NUMBER		KNH1-HEXRT5----		DRAWING NUMBER		RT5	
													SCALE 1:1				SHEET 1 OF 1	

Mouser Electronics

Authorized Distributor

Click to View Pricing, Inventory, Delivery & Lifecycle Information:

Essentra:

KNH1-HEXRT5----