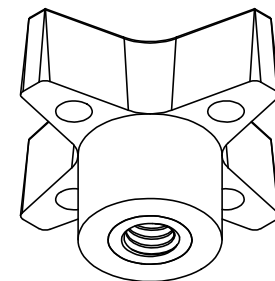
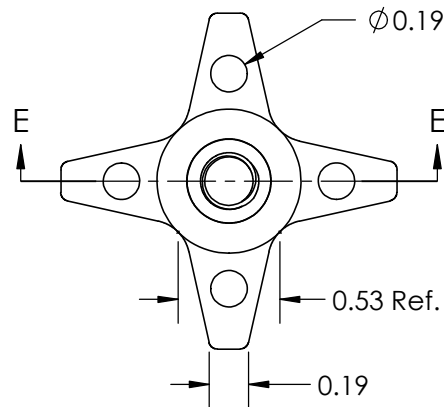
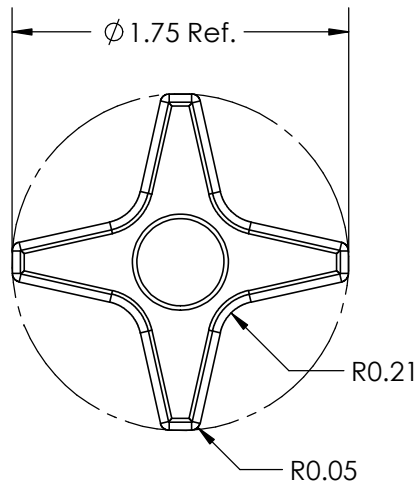



SECTION E-E



FOR CUSTOMER APPROVAL ONLY				REV	BY	DATE	COMMENT	DIMENSIONS ARE IN INCHES TOLERANCES FRACTIONAL ± TWO PLACE DECIMAL ± 0.03 THREE PLACE DECIMAL ± 0.010 UNLESS OTHERWISE NOTED		DRAWN	VRR	 INNOVATIVE COMPONENTS	
NAME:				0	TMO	10/6/00	RELEASE DATE		COMMENTS	APPROVED	LQR	PART NAME 1.75" 4-Prong Knob, 1/4-20 Steel, Zinc Insert, Blind	
				1	DP	05/28/19	Changed Into Solid Works Format.			DATE	05/30/2019		
TITLE:													
DATE:										KNOB MATERIAL Polypropylene, Black	INSERT MATERIAL Steel		
SIGNATURE:				PROPRIETARY AND CONFIDENTIAL THE INFORMATION CONTAINED IN THIS DRAWING IS THE SOLE PROPERTY OF INNOVATIVE COMPONENTS. ANY REPRODUCTION IN PART OR AS A WHOLE WITHOUT THE WRITTEN PERMISSION OF INNOVATIVE COMPONENTS IS PROHIBITED.				KNOB FINISH Textured					
								INSERT PART NUMBER NR4C0437750--2R	INSERT FINISH Trivalent Zinc		SCALE 1:1		SHEET 1 OF 1



Mouser Electronics

Authorized Distributor

Click to View Pricing, Inventory, Delivery & Lifecycle Information:

Essentra:

[KN4C----4P4B-21](#)