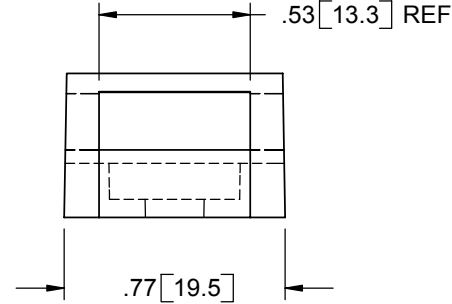
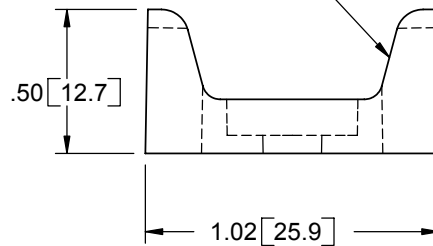
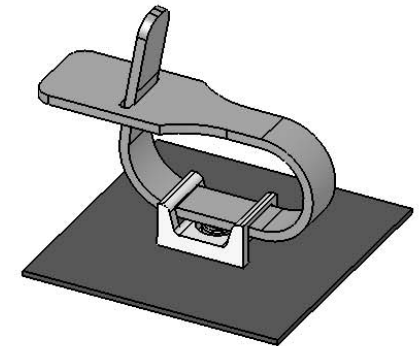


ACCOMODATES "RKW" SERIES TIES
UP TO 1/2 [12.7] WIDE



MOUNTING RIVETS FOR FTH-27-RS

USE RIVET NO.	HOLE DIA. (CHASSIS)	FOR PANEL THICKNESS RANGE
SR-5055	.201 [5.1]	.035-.075 [0.9-1.9]
SR-5065	.201 [5.1]	.075-.114 [1.9-2.9]
SR-5075	.201 [5.1]	.114-.154 [2.9-3.9]
SR-5085	.201 [5.1]	.154-.193 [3.9-4.9]
SR-5095	.201 [5.1]	.193-.232 [4.9-5.9]
SR-5105	.201 [5.1]	.232-.272 [5.9-6.9]



NOTES:

1. MATERIAL: NYLON 6/6 UL 94 V-2 (RMS-01).
2. MATERIAL: NYLON 6/6 UL 94 V-0 (RMS-19),
AVAILABLE BY SPECIAL ORDER ONLY.
TO ORDER USE P/N: FTH-27-XX-19.
3. COLOR: NATURAL.

TITLE: FLAT TIE HOLDER					DWG IN IN [MM]	
CREATED USING SOLIDWORKS	FILE #: FTH-27	DWN: SK	APP: -	FINAL		
TOLERANCES UNLESS NOTED .XX=±.010 .XXX=±.005 FRAC.=±1/64 ANG.=±1°	SHEET: 1 OF 1	SHEET SIZE: A	DT: 11/02/05	CHKD: -	PART #	PRINT TYPE
RE: RICHCO, INC.	RICHCO, INC. ENG@RICHCO-INC.COM (773) 539-4060			SEE TABLE		CA

D	DESCRIPTION	SK	DATE
-	COMPLETELY REDRAWN, SEE ECN #1090	SK	11/02/05
REV.	DESCRIPTION	ENGR.	DATE

Mouser Electronics

Authorized Distributor

Click to View Pricing, Inventory, Delivery & Lifecycle Information:

Essentra:

[FTH-27-RS-01](#) [FTH-27-12-01](#)