

FIGURE 1

WITH DRIVE SCREW

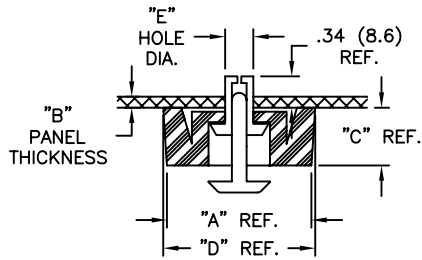


FIGURE 2

WITH PUSH RIVET

PART NO.	FOOT MAT'L	"A" REF.	"B" THKS. RANGE	"C" REF.	"D" REF.	"E" HOLE DIAMETER	FIGURE
FF-001B	RMS-76	.79 (20)	.039-.091 (1.0-2.3)	.55 (14)	.95 (24)	.197-.201(5.0-5.1)	1
FF-004B		.71 (18)					
FF-003-P3x5.5B	RMS-42	.53 (13.5)	.031-.071 (0.8-1.8)	.22 (5.5)	.56 (14.2)	.122 (3.1)-.126 (3.2)	2
FF-005-P4x5B	RMS-76	.79 (20)	.031-.071 (0.8-1.8)	.17 (4.2)	.83 (21)	.161-.165 (4.1-4.2)	
FF-005-P4x6B			.071-.111 (1.8-2.8)				
FF-005-P4x7B			.114-.146 (2.9-3.7)				
FF-005-P4x8B			.150-.189 (3.8-4.8)				
FF-006-P4x6B			.024-.039 (0.6-1.0)				
FF-006-P4x7B	.55 (14)	.55 (14)	.039-.079 (1.0-2.0)	.24 (6)	.59 (15)	.200 (5.1)-.205 (5.2)	
FF-006-P4x8B			.079-.118 (2.0-3.1)				
FF-006-P5x6.5B			.031-.047 (0.8-1.2)				
FF-006-P5x7.5B	RMS-76	.79 (20)	.051-.091 (1.3-2.3)	.31 (8)	.83 (21)	.161-.165 (4.1-4.2)	
FF-008-P4x6B			.031-.071 (0.8-1.8)				
FF-008-P4x7B			.075-.110 (1.9-2.8)				
FF-008-P4x8B			.114-.157 (2.9-4.0)				
FF-009-P4x6B	.55 (14)	.55 (14)	0-.031 (0-0.8)	.35 (9)	.59 (15)	.161-.165 (4.1-4.2)	
FF-009-P4x7B			.031-.079 (0.8-2.0)				
FF-009-P4x8B			.083-.118 (2.1-3.0)				
FF-010-P4x7B	.39 (10)	.39 (10)	.039-.079 (1.0-2.0)	.16 (4)	.43 (10.8)	.142-.146 (3.6-3.7)	
FF-010-P4x8B			.079-.118 (2.0-3.1)				
FF-013-P3.5x4.5B			.020-.047 (0.5-1.2)				
FF-013-P3.5x5.5B			.047-.079 (1.2-2.0)				
FF-013-P3.5x6.0B	.098-.126 (2.5-3.2)	.098-.126 (2.5-3.2)	.098-.126 (2.5-3.2)	.16 (4)	.43 (10.8)	.142-.146 (3.6-3.7)	
FF-013-P3.5x7.0B							.098-.126 (2.5-3.2)

NOTES:

1. MATERIAL:

FIGURE 1: DRIVE SCREW: ACETAL (RMS-39)
GROMMET: NYLON 6 (RMS-52)

FIGURE 2: PUSH RIVET (PIN AND GROMMET): NYLON 6 (RMS-52)

2. COLOR: BLACK

J	SEE ECN #1315 FOR CHANGES	SK 04.16.07	TITLE: FAST FEET				DWG IN IN (MM)	FINAL	PRINT TYPE
I	SEE ECN #863 FOR CHANGES	SM 10.04.04	TOLERANCES UNLESS NOTED	FILE # FF	DWN: P.B.	APP:	PART #	CA	
H	SEE ECN #714 FOR CHANGE DETAILS	SM 10.09.03	.XX=±.010	MAT'L: SEE NOTES	DT: 04-29-94	DT:			
G	SEE ECN #591 FOR CHANGE DETAILS	SM 03.04.03	.XXX=±.005	RE: RICHCO, INC.	RICHCO INC.		SEE TABLE		
F	SEE ECN #471 FOR CHANGE DETAILS	SM 09.24.02	FRAC=±1/64	PO BOX 804238, CHICAGO, 60680		(773) 539-4060			
-	SEE ENGINEERING FOR REV A-E	-	ANG=±1°						
REV	DESCRIPTION	ENGR DATE							

Mouser Electronics

Authorized Distributor

Click to View Pricing, Inventory, Delivery & Lifecycle Information:

Essentra:

[FF-001B](#) [FF-010-P4X7B](#) [FF-006-P5X6.5B](#) [FF-004B](#) [FF-003-P3X5.5B](#) [FF-005-P4X5B](#) [FF-005-P4X6B](#) [FF-005-P4X7B](#) [FF-005-P4X8B](#) [FF-13-P3.5X5.5B](#) [FF-13-P3.5X6.0B](#) [FF-13-P3.5X7.0B](#) [FF-008-P4X8B](#) [FF-009-P4X6B](#) [FF-009-P4X7B](#) [FF-009-P4X8B](#) [FF-010-P4X8B](#) [FF-13-P3.5X4.5B](#) [FF-006-P4X6B](#) [FF-006-P4X7B](#) [FF-006-P4X8B](#) [FF-006-P5X7.5B](#) [FF-008-P4X6B](#) [FF-008-P4X7B](#)