

TO SNAP-LOCK IN A .125±.002
[3.18±0.05] DIA. HOLE, IN A
.031-.078 [0.79-1.98] PANEL THICKNESS
(BOTH ENDS)

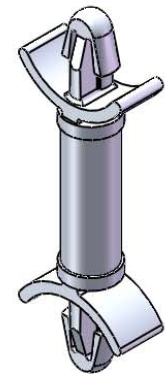
NOTES:

1. MATERIAL: NYLON 6/6 UL 94 V-0 (RMS-19)
COLOR: NATURAL.
AVAILABLE BY SPECIAL ORDER ONLY.
2. ALTERNATE UNITS FOR REFERENCE ONLY.

MATERIAL: NYLON 6/6
UL 94 V-2 (RMS-01)
COLOR: NATURAL
PART NO.

DIM.
"A"±.015 [0.4]

| | |
|--------------|-------------|
| DLCBSM-3-01 | 3/16 [4.8] |
| DLCBSM-4-01 | 1/4 [6.4] |
| DLCBSM-5-01 | 5/16 [7.9] |
| DLCBSM-6-01 | 3/8 [9.5] |
| DLCBSM-7-01 | 7/16 [11.1] |
| DLCBSM-8-01 | 1/2 [12.7] |
| DLCBSM-9-01 | 9/16 [14.3] |
| DLCBSM-10-01 | 5/8 [15.9] |



| | | | | | | | | | | | | | |
|------|--|--|------------------------------------|-------|----------|--|--|---------------|--------------|-----------|--------|-------------------|---------------|
| D | | | REDRAWN, SEE ECN #1208 FOR CHANGES | SK | 11/29/06 | TITLE: DUAL LOCKING CIRCUIT BOARD SUPPORT, MINI | | | | ⊕ | ⊖ | DWG IN IN [MM] | QR |
| - | | | SEE ENGINEERING FOR REVISIONS A-C | --- | ----- | CREATED USING SOLIDWORKS | FILE #: DLCBSM | DWN: SK | APP: RT | FINAL | | | |
| REV. | | | DESCRIPTION | ENGR. | DATE | TOLERANCES UNLESS NOTED .XX=±.010 .XXX=±.005 FRAC.=±1/64 ANG.=±1° | SHEET: 1 OF 1 | SHEET SIZE: A | DT: 11/29/06 | CHKD: SJ | PART # | | PRINT TYPE |
| | | | | | | RE: RICHCO, INC. | RICHCO, INC. ENG@RICHCO-INC.COM (773) 539-4060 | | | SEE TABLE | | CA | |

Mouser Electronics

Authorized Distributor

Click to View Pricing, Inventory, Delivery & Lifecycle Information:

Essentra:

[DLCBSM-6-01](#) [DLCBSM-3-01](#) [DLCBSM-10-01](#) [DLCBSM-4-01](#) [DLCBSM-5-01](#) [DLCBSM-7-01](#) [DLCBSM-8-01](#)
[DLCBSM-9-01](#)