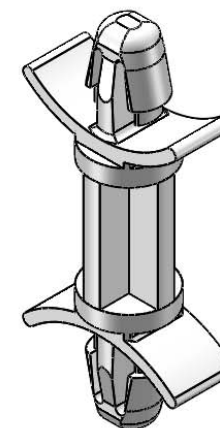


TO SNAP-LOCK IN A .187±.003  
[4.75±0.08] DIA. HOLE, IN A  
.031-.078 [0.79-1.98] PANEL THICKNESS  
(BOTH ENDS)




MATERIAL: NYLON 6/6 UL 94 V-2 (RMS-01) COLOR: NATURAL PART NO.	MATERIAL: NYLON 6/6 UL 94 V-0 (RMS-19) COLOR: NATURAL PART NO.	DIM. "A"±.015 [0.4]
DLCBS2-3-01	DLCBS2-3-19	3/16 [4.8]
DLCBS2-4-01	DLCBS2-4-19	1/4 [6.4]
DLCBS2-6-01	DLCBS2-6-19	3/8 [9.5]
DLCBS2-8-01	DLCBS2-8-19	1/2 [12.7]
DLCBS2-9-01	DLCBS2-9-19	9/16 [14.3]
DLCBS2-10-01	DLCBS2-10-19	5/8 [15.9]
DLCBS2-12-01	DLCBS2-12-19	3/4 [19.1]
DLCBS2-14-01	DLCBS2-14-19	7/8 [22.2]



#### NOTES:

1. MATERIAL: NYLON 6/6 UL 94 HB (RMS-73)  
COLOR: NATURAL.  
AVAILABLE BY SPECIAL ORDER ONLY.  
TO ORDER USE P/N DLCBS2-X-73
2. ALTERNATE UNITS FOR REFERENCE ONLY.

E	SEE CO 200317 FOR CHANGES	SK	02/03/09
D	REDRAWN, SEE ECN #1208 FOR CHANGES	SK	11/29/06
-	SEE ENGINEERING FOR REVISIONS A-C	---	----
REV.	DESCRIPTION	ENGR.	DATE

TITLE: DUAL LOCKING CIRCUIT BOARD SUPPORT, TYPE 2						DWG IN IN [MM]	
CREATED USING SOLIDWORKS	FILE #: DLCBS2		DWN: SK	APP: RT	FINAL		
TOLERANCES UNLESS NOTED .XX=±.010 .XXX=±.005 FRAC.=±1/64 ANG.=±1°	SHEET: 1 OF 1	SHEET SIZE: A	DT: 11/27/06	CHKD: SJ	PART #	PRINT TYPE	
RE: RICHCO, INC.		RICHCO, INC. ENG@RICHCO-INC.COM (773) 539-4060		SEE TABLE		CA	

# Mouser Electronics

Authorized Distributor

Click to View Pricing, Inventory, Delivery & Lifecycle Information:

## Essentra:

[DLCBS2-3-01](#) [DLCBS2-6-19](#) [DLCBS2-4-01](#) [DLCBS2-10-01](#) [DLCBS2-10-19](#) [DLCBS2-12-01](#) [DLCBS2-12-19](#)  
[DLCBS2-14-01](#) [DLCBS2-14-19](#) [DLCBS2-3-19](#) [DLCBS2-4-19](#) [DLCBS2-6-01](#) [DLCBS2-8-01](#) [DLCBS2-8-19](#) [DLCBS2-9-01](#) [DLCBS2-9-19](#)