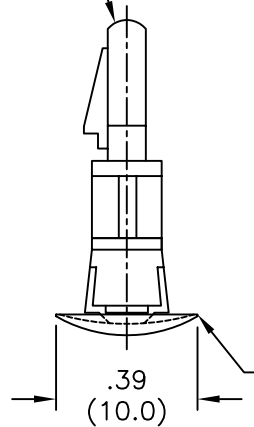





1. MATERIAL: NYLON 6/6 (RMS-01).  
FLAME RETARDANT, NYLON (RMS-19),  
AVAILABLE BY SPECIAL ORDER ONLY.  
TO ORDER, REPLACE "-01" WITH "-19"
2. MATERIAL: NYLON 4/6, HEAT STABILIZED, (RMS-109)  
AVAILABLE BY SPECIAL ORDER ONLY.  
TO ORDER, REPLACE "-01" WITH "-109".
3. COLOR: NATURAL.  
BLACK, AVAILABLE BY SPECIAL ORDER ONLY.  
TO ORDER, ADD "-B" TO PART NO.

TO SNAP-LOCK IN A  $.157 \pm .003$   
-  $(4.0 \pm 0.08)$  DIA. HOLE, IN A  
.063 (1.6) NOMINAL THICK BOARD



TO SNAP-LOCK IN A  $.236 \pm .003$   
 $-(6.0 \pm 0.08)$  DIA. HOLE, IN A  
 $.031-.047$   $(0.8-1.2)$  PANEL THICKNESS

PART NO.	DIM. "A" ±.015(0.4)
CRLCBSR-3-01	3/16 (4.8)
CRLCBSR-4-01	1/4 (6.4)
CRLCBSR-5-01	5/16 (8.0)
CRLCBSR-6-01	3/8 (9.5)
CRLCBSR-8-01	1/2 (12.7)
CRLCBSR-12-01	3/4 (19.0)

F	ADDED NOTE 2 (RMS-109) BY SPECIAL ORDER	SM 06.06.02	TITLE: CUPPED REVERSE LOCKING CBS, ROUND HOLE						DWG IN IN (MM)	
E	UPDATED NOTES AND CHANGED FILE NO.	SM 05.08.02								
D	DIM. TO S-L IN .24 (6.0)... ADDED; TABLE REDUCED; UL NOTES ADDED	PB 07.10.95	TOLERANCES UNLESS NOTED .XX=±.010 .XXX=±.005 FRAC=1/64 ANG=1°	FILE # CRLCBSR MAT'L: SEE NOTES RE: RICHCO, INC.	DWN: P.B. DT: 07-29-94	APP: DT:	FINAL		PART #  SEE TABLE	PRINT TYPE CA
C	DIMS IN CHASSIS THKNS PUT TO 3 PLACES	PB 11.23.94								
B	CONVERTED TO ACAD; DIM "A" WAS .411	PB 07.29.94								
A	COMPLETE REDRAW, .40 WAS .39, .06 WAS .07, RMS-01 WAS RMS-48	RT 03.10.94								
REV	DESCRIPTION	ENGR DATE								

# Mouser Electronics

Authorized Distributor

Click to View Pricing, Inventory, Delivery & Lifecycle Information:

Essentra:

[CRLCBSR-6-01](#) [CRLCBSR-4-01](#) [CRLCBSR-12-01](#) [CRLCBSR-5-01](#) [CRLCBSR-3-01](#) [CRLCBSR-8-01](#)