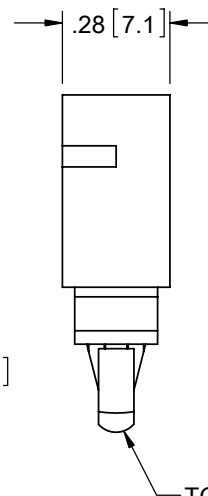
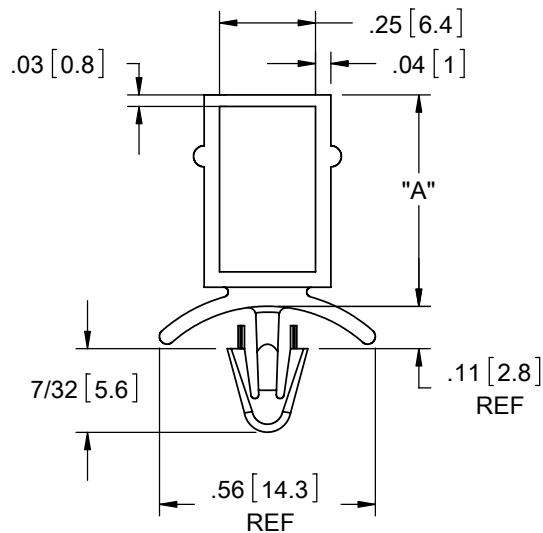
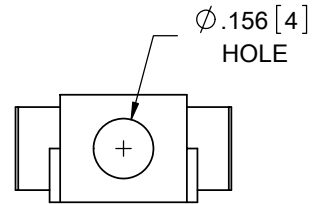
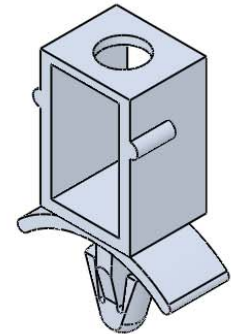


# AVAILABLE BY SPECIAL ORDER ONLY






TO SNAP-LOCK IN A  $.156 \pm .003$   
[4±0.08] DIA. HOLE, IN A  
.031-.078 [0.79-1.98] PANEL THICKNESS



**NOTE:** WHEN USED IN STACKING APPLICATION,  
RECOMMENDED MAX. PANEL THICKNESS  
BETWEEN CBSS PARTS IS  $.070 [1.78]$

**NOTES:**  
1. ALTERNATE UNITS FOR REFERENCE ONLY

TITLE: CIRCUIT BOARD STACKING SPACERS							DWG IN IN [MM]	
CREATED USING SOLIDWORKS	FILE #: CBSS		DWN: SK	APP: RT	FINAL			
TOLERANCES UNLESS NOTED .XX=±.010 .XXX=±.005 FRAC.=±1/64 ANG.=±1°	SHEET: 1 OF 1	SHEET SIZE: A	DT: 11/29/06	CHKD: DZ	PART #		PRINT TYPE	
	RE: RICHCO, INC.		RICHCO, INC. ENG@RICHCO-INC.COM (773) 539-4060		SEE TABLE		CA	

REV.	DESCRIPTION	ENGR.	DATE
D	REDRAWN, SEE ECN #1258 FOR CHANGES	SK	12/05/06
-	SEE ENGINEERING FOR REVISIONS A-C	---	----

# Mouser Electronics

Authorized Distributor

Click to View Pricing, Inventory, Delivery & Lifecycle Information:

Essentra:

[CBSS-10-01](#) [CBSS-10-19](#) [CBSS-12-01](#) [CBSS-12-19](#) [CBSS-14-01](#) [CBSS-14-19](#) [CBSS-8-01](#) [CBSS-8-19](#)