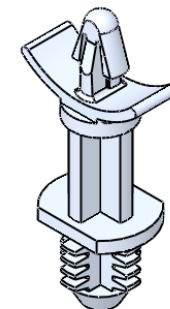




MATERIAL: NYLON 6/6 UL 94 V-2 (RMS-01) COLOR: NATURAL PART NO.	"A"±.015 [0.4]	"B"±.015	"C"±.015	HOLE DIA. ±.003 [0.08]	PANEL THICKNESS
BHDL-4-01	1/4 [6.4]	7/16 [11.1]	5/16 [7.9]	.312 [7.92]	1/4 [6.4] MIN
BHDL-6-01	3/8 [9.5]				
BHDL-8-01	1/2 [12.7]				
BHDL-10-01	5/8 [15.9]				
BHDL-12-01	3/4 [19.1]				
BHDL-14-01	7/8 [22.2]	3/8 [9.5]	17/64 [6.7]	.250 [6.35]	1/4 [6.4] MIN
*BHDL1-4-01	1/4 [6.4]				
*BHDL1-6-01	3/8 [9.5]				
*BHDL1-8-01	1/2 [12.7]				
*BHDL1-10-01	5/8 [15.9]				
*BHDL-12-01	3/4 [19.1]				
*BHDL1-14-01	7/8 [22.2]				

*PARTS AVAILABLE BY SPECIAL ORDER ONLY



NOTES:

1. MATERIAL: NYLON 6/6 UL 94 V-0 (RMS-19),
COLOR: NATURAL.
AVAILABLE BY SPECIAL ORDER ONLY.
2. ALTERNATE UNITS FOR REFERENCE ONLY

AVAILABLE BY SPECIAL ORDER ONLY. 2. ALTERNATE UNITS FOR REFERENCE ONLY				TITLE: BLIND HOLE DUAL LOCKING CIRCUIT BOARD SUPPORT						DWG IN IN [MM]											
F		SEE CO 200035 FOR CHANGES		SK		09/26/07		CREATED USING SOLIDWORKS		FILE #: BHDL		DWN: SK		APP: RT		FINAL					
E		SEE ECN #1262 FOR CHANGES		SK		12/11/06		TOLERANCES UNLESS NOTED		SHEET: 1 OF 1		SHEET SIZE: A		DT: 11/28/06		CHKD: SJ		PART #		PRINT TYPE	
D		REDRAWN, SEE ECN #1208 FOR CHANGES		SK		11/29/06		.XX±.010		RE: RICHCO, INC.		RICHCO, INC. ENG@RICHCO-INC.COM (773) 539-4060		SEE TABLE		CA					
-		SEE ENGINEERING FOR REVISIONS A-C		---		----		.XXX±.005													
REV.		DESCRIPTION		ENGR.		DATE		FRAC. ±1/64													
								ANG. ±1°													

CREATED USING
SOLIDWORKS

TOLERANCES
UNLESS NOTED
.XX=±.010
.XXX=±.005
FRAC.=±1/64
ANG.=±1°

Mouser Electronics

Authorized Distributor

Click to View Pricing, Inventory, Delivery & Lifecycle Information:

Essentra:

[BHDL-14-01](#) [BHDL-6-01](#) [BHDL-10-01](#) [BHDL-8-01](#) [BHDL-12-01](#) [BHDL-4-01](#)