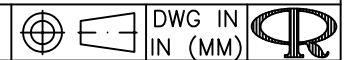


PART NO.	HOLDING DIA. "D"	"E" REF.	"T"	"W"
AL2	1/8 (3.2)	.46 (11.7)	1/32 (0.8)	3/8 (9.5)
AL3	3/16 (4.8)	.50 (12.7)		
AL4	1/4 (6.4)	.53 (13.5)		
AL5	5/16 (7.9)	.56 (14.2)		
AL6	3/8 (9.5)	.59 (15.0)		
AL7	7/16 (11.1)	.62 (15.7)		
AL8	1/2 (12.7)	.65 (16.5)		
AL9	9/16 (14.3)	.75 (19.1)		
AL10	5/8 (15.9)	.78 (19.8)		
AL11	11/16 (17.5)	.81 (20.6)		
AL12	3/4 (19.1)	.84 (21.3)	1/16 (1.6)	1/2 (12.7)
AL14	7/8 (22.2)	.90 (22.9)		
AL15	15/16 (23.8)	.93 (23.6)		
AL16	1 (25.4)	.96 (24.4)		
AL18	1-1/8 (28.6)	1.05 (26.7)		
AL20	1-1/4 (31.8)	1.11 (28.2)		

NOTES:

1. MAT'L: ALUMINUM ALLOY 5052 H-32 (RMS-199)

TITLE: CABLE CLAMPS, ALUMINUM



DWG IN IN (MM)

FINAL.

C	SEE ECN #927 FOR CHANGES	SK 01.31.05
B	DRAWING UPDATED AND CHANGED FILE NO.	SM 09.26.01
A	CONVERTED TO ACAD	PB 01.18.95
REV	DESCRIPTION	ENGR DATE

TOLERANCES UNLESS NOTED
 .XX=±.010
 .XXX=±.005
 FRAC=±1/64
 ANG=±1°

FILE # AL
 MAT'L: SEE NOTES
 RE: RICHCO, INC.

DWN: P.B.
 DT: 01-18-95
 APP: RICHCO INC.
 PO BOX 804238, CHICAGO, 60680
 (773) 539-4060

PART #
 AL SERIES
 PRINT TYPE
 CA

Mouser Electronics

Authorized Distributor

Click to View Pricing, Inventory, Delivery & Lifecycle Information:

Essentra:

[AL5A](#) [AL12](#) [AL18](#) [AL10A](#) [AL11](#) [AL14](#) [AL16](#) [AL20](#) [AL2A](#) [AL3A](#) [AL4A](#) [AL6A](#) [AL7A](#) [AL8A](#) [AL9A](#)