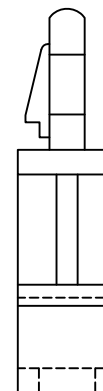
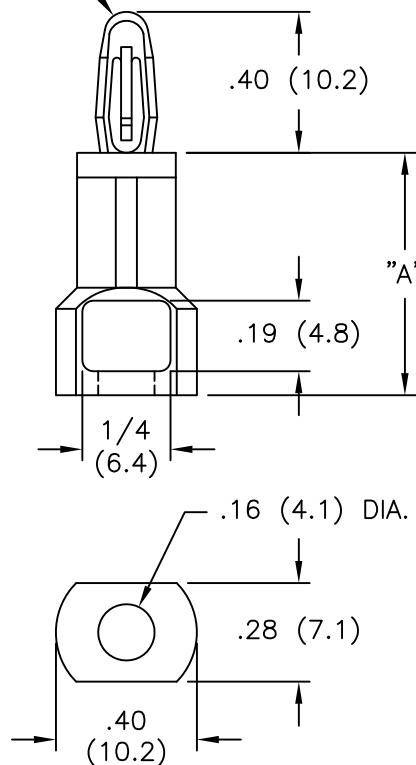


TO SNAP-LOCK IN A $.156 \pm .003$
(4.0 ± 0.08) DIA. HOLE, IN A
.062 (1.6) THICK PANEL/BOARD



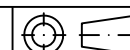
| PART NO. | "A" |
|--------------|-------------|
| SRLCBS-6-01 | 3/8 (9.5) |
| SRLCBS-7-01 | 7/16 (11.1) |
| SRLCBS-8-01 | 1/2 (12.7) |
| SRLCBS-10-01 | 5/8 (15.9) |
| SRLCBS-12-01 | 3/4 (19.1) |
| SRLCBS-14-01 | 7/8 (22.2) |
| SRLCBS-16-01 | 1 (25.4) |

| USE RICHCO RIVET NO. | FOR CHASSIS THICKNESS |
|----------------------|------------------------|
| SR-4050 | .026-.062 (0.7-1.6) |
| SR-4060 | .062-.105 (1.5-2.7) |
| SR-4070 | .105-.145 (2.7-3.7) |
| SR-4080 | .145-.184 (3.7-4.7) |
| SR-4090 | .184-.223 (4.7-5.7) |
| SR-4100 | .223-.263 (5.7-6.7) |
| SR-4120 | .282-.341 (7.2-8.7) |

NOTES:

1. MATERIAL: NYLON 6/6 (RMS-01).
FLAME RETARDANT NYLON (RMS-19),
AVAILABLE BY SPECIAL ORDER ONLY.
2. COLOR: NATURAL.
3. .157 TO .161 (4.0 TO 4.1) DIA.
HOLE IN CHASSIS REQUIRED FOR
APPLICATION

TITLE: SNAP RIVET LOCKING CIRCUIT BOARD SUPPORT



DWG IN
IN (MM)



| | | |
|-----|------------------------------------|-------------|
| E | SEE CO 200401 FOR CHANGES | SK 09.08.09 |
| D | SEE ECN #1253 FOR CHANGES | SK 11.29.06 |
| C | SEE ECN #1002 FOR CHANGES | SK 05.11.05 |
| B | UPDATED NOTES AND CHANGED FILE NO. | SM 08.20.02 |
| A | CONVERTED TO ACAD | PB 05.03.94 |
| REV | DESCRIPTION | ENGR DATE |

TOLERANCES
UNLESS NOTED
.XX=±.010
.XXX=±.005
FRAC=±1/64
ANG=±1°

FILE # SRLCBS
MAT'L: SEE NOTES
RE: RICHCO, INC.

DWN: P.B.
DT: 05-03-94 DT:
RICHCO INC.
PO BOX 804238, CHICAGO, 60680
(773) 539-4060

PART #
SEE TABLE

PRINT
TYPE
CA

Mouser Electronics

Authorized Distributor

Click to View Pricing, Inventory, Delivery & Lifecycle Information:

Essentra:

[SRLCBS-16-01](#) [SRLCBS-10-01](#) [SRLCBS-12-01](#) [SRLCBS-14-01](#) [SRLCBS-6-01](#) [SRLCBS-7-01](#) [SRLCBS-8-01](#)