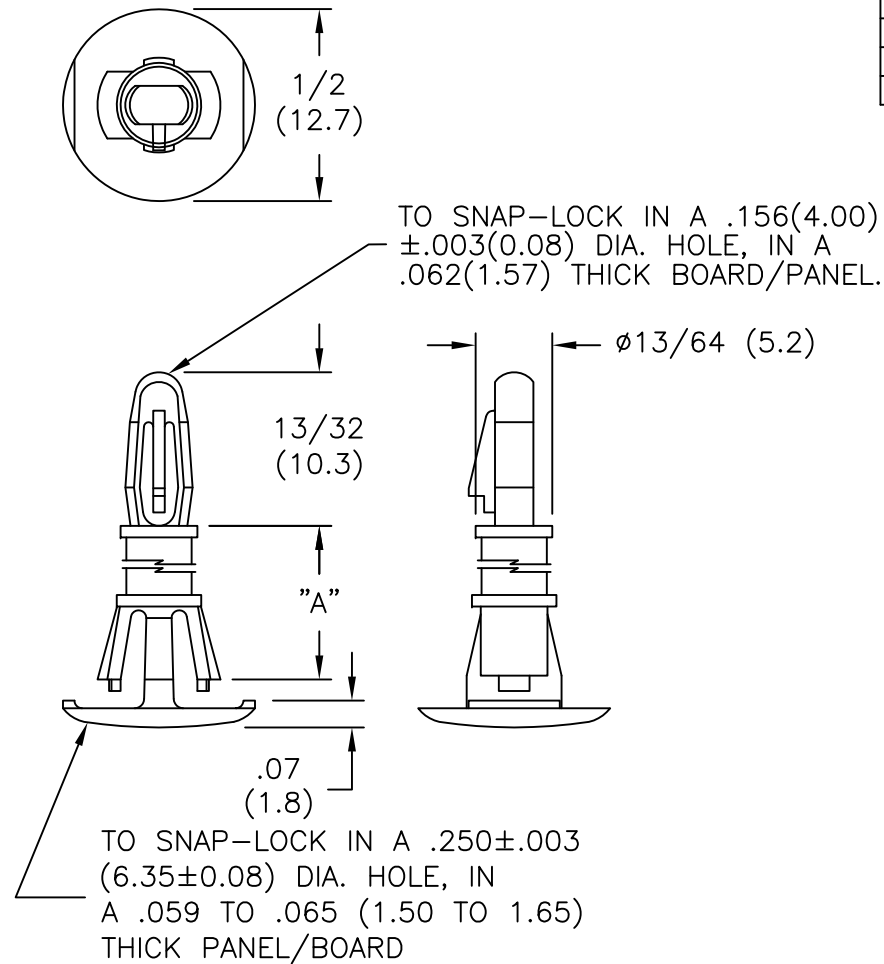





PART #	DIM. "A" ±.015(0.4)
RLCBSR1-4-01	1/4 (6.4)
RLCBSR1-6-01	3/8 (9.5)
RLCBSR1-8-01	1/2 (12.7)
RLCBSR1-10-01	5/8 (15.9)



NOTES:

1. MATERIAL: NYLON 6/6 (RMS-01).
FLAME RETARDANT NYLON (RMS-19),
AVAILABLE BY SPECIAL ORDER.
2. COLOR: NATURAL.

TITLE: REVERSE LOCK CKT. BD. SUPPORT, STYLE #1					DWG IN IN(MM)	
TOLERANCES UNLESS NOTED .XX=±.010 .XXX=±.015 FRAC=1/64 ANG=1°	FILE #	RLCBSR1	DWN: J.B./R.T. APP:		FINAL	
	MAT'L:	SEE NOTES	DT: 11-17-95 DT:		PART # SEE TABLE	PRINT TYPE CA
	RE:	RICHCO INC.	RICHCO INC. PO BOX 804238, CHICAGO, 60680 (773) 539-4060			

Mouser Electronics

Authorized Distributor

Click to View Pricing, Inventory, Delivery & Lifecycle Information:

Essentra:

[RLCBSR1-6-01](#) [RLCBSR1-4-01](#) [RLCBSR1-10-01](#) [RLCBSR1-8-01](#)