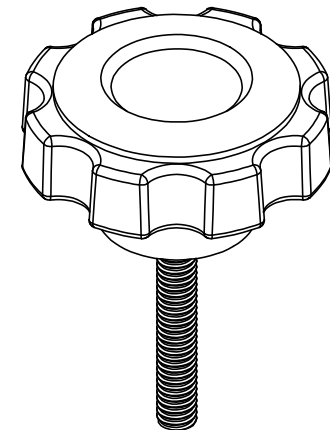
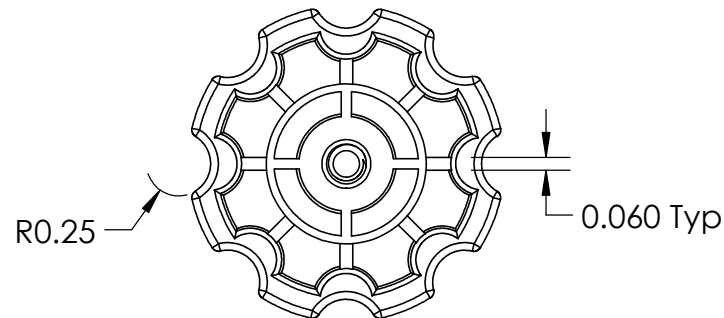
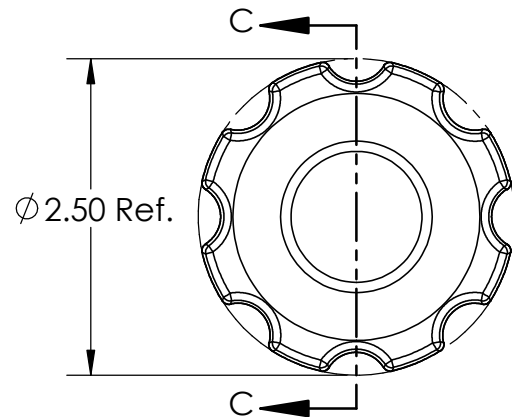

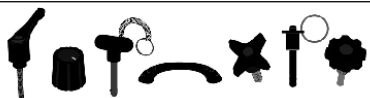


SECTION C-C
SCALE 1 : 1.5



FOR CUSTOMER APPROVAL ONLY					REV	BY	DATE	COMMENT	DIMENSIONS ARE IN INCHES TOLERANCES FRACTIONAL ± TWO PLACE DECIMAL ± 0.03 THREE PLACE DECIMAL ± 0.010 UNLESS OTHERWISE NOTED		DRAWN	VRR	INNOVATIVE COMPONENTS				
NAME:					0	CG	07/01/20	RELEASE DATE			APPROVED	LQR	<div>PART NAME 2.5" Soft touch fluted knob 5/16-18 x 2" Steel, Zinc Stud</div>				
								DATE			07/01/2020						
TITLE:								COMMENTS Soft Touch Material Usage: 0.0291 Pounds									
DATE:								RoHS Compliant									
SIGNATURE:					<div>PROPRIETARY AND CONFIDENTIAL</div> <div>THE INFORMATION CONTAINED IN THIS DRAWING IS THE SOLE PROPERTY OF INNOVATIVE COMPONENTS. ANY REPRODUCTION IN PART OR AS A WHOLE WITHOUT THE WRITTEN PERMISSION OF INNOVATIVE COMPONENTS IS PROHIBITED.</div>			INNER PART NUMBER	KN5C2000F6--21		INSERT PART NUMBER	Steel		PART NUMBER	KN5C2000F7S--21	DRAWING NUMBER	KN5C2000F7S--21-R0
								MATERIAL	TPE-48 Shore A		INSERT FINISH	Trivalent Zinc		SCALE	1:1.5		
								FINISH	Textured								



PLASTIC KNOBS / CONTROL KNOBS / HANDLES / QUICK RELEASE PINS & BALL LOCK PINS
SPRING LOADED PINS & PLUNGERS / WIRE ROPE LANYARDS / THREAD IDENTIFIERS

Mouser Electronics

Authorized Distributor

Click to View Pricing, Inventory, Delivery & Lifecycle Information:

Essentra:

[KN5C2000F7S--21](#)