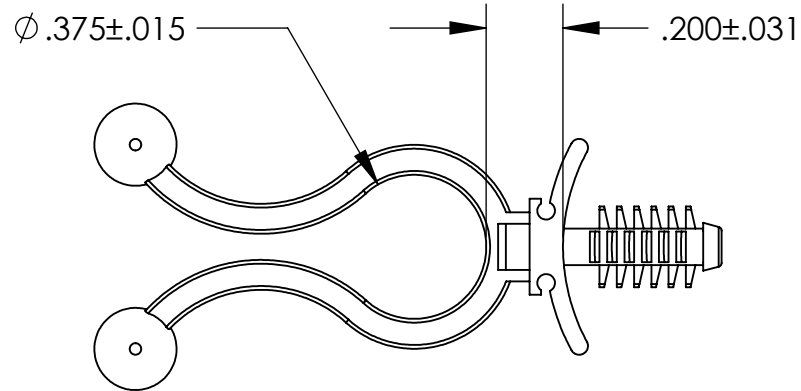
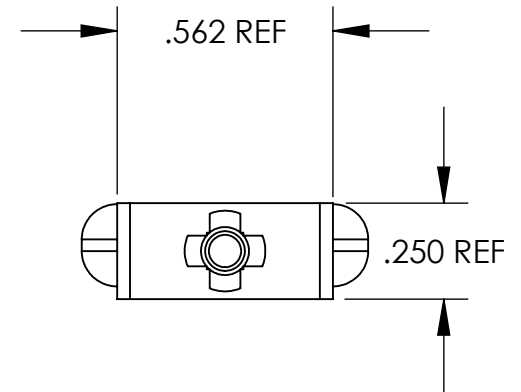
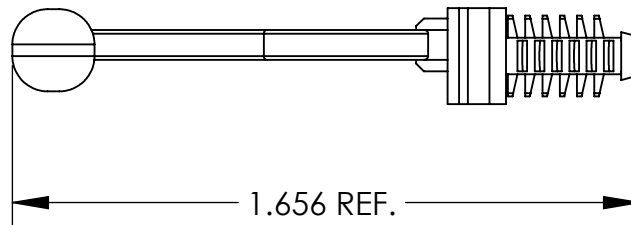


UNCONTROLLED DOCUMENT



NOTES:
MOUNTING HOLE $\phi .187$
PANEL RANGE .031 TO .250



TOLERANCES UNLESS NOTED

$\pm .005$ ON DIMENSIONS THRU .625
 $\pm .008$ ON DIMENSIONS .626 THRU 1.000
 $\pm .010$ ON DIMENSIONS 1.001 THRU 1.500
 $\pm .015$ ON DIMENSIONS LARGER THAN 1.500
 $\pm .015$ ON FRACTIONAL DIMENSIONS

WE RESERVE THE RIGHT
TO DISCONTINUE ITEMS,
CHANGE SPECIFICATIONS
OR DESIGN AT ANY TIME
WITHOUT NOTICE AND
WITHOUT INCURRING
ANY OBLIGATIONS

PROPERTY OF
MICRO PLASTICS INC.

CATALOG DRAWING
"EZ" TWIST LOCK ON FIN CLIP BASE
MICRO P/N 23EZF037B025
DWG. # 23EZF037B025
FILE SERVER\ENG\WEB

MATERIAL: NYLON 6/6

DATE

SCALE
2:1

TA

Mouser Electronics

Authorized Distributor

Click to View Pricing, Inventory, Delivery & Lifecycle Information:

[Essentra:](#)

[23EZF037B025](#)