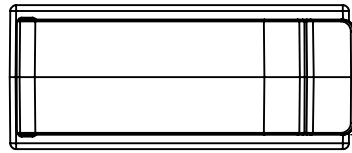
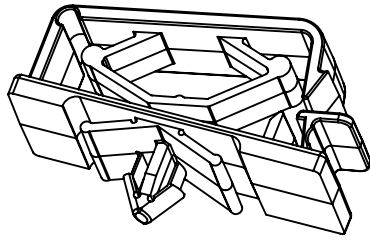


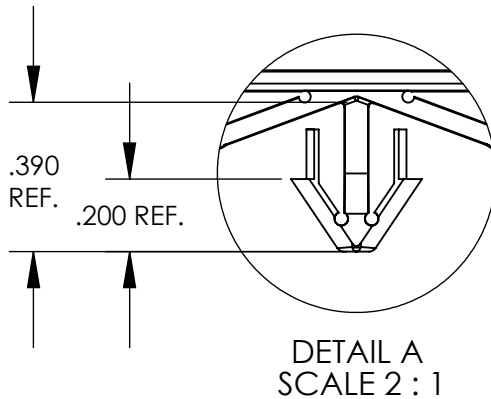
# UNCONTROLLED DOCUMENT

## NOTES:

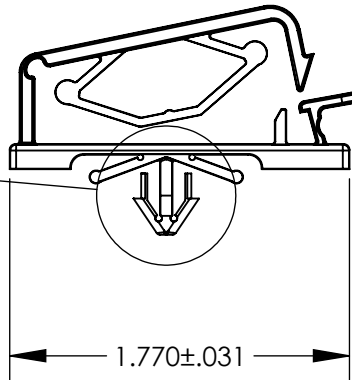
1. MAX INSIDE WIDTH 1.250
2. MAX INSIDE HEIGHT .250
3. PANEL THICKNESS RANGE .080 / .150
4. HOLE SIZE .250



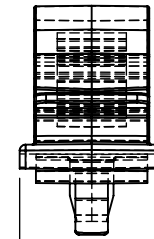
.600±.031



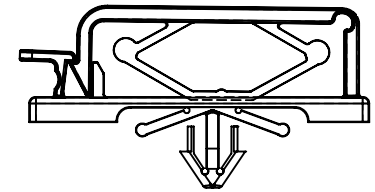
DETAIL A  
SCALE 2 : 1



1.770±.031



.750±.031



## TOLERANCES UNLESS NOTED

±.005 ON DIMENSIONS THRU .625  
 ±.008 ON DIMENSIONS .626 THRU 1.000  
 ±.010 ON DIMENSIONS 1.001 THRU 1.500  
 ±.015 ON DIMENSIONS LARGER THAN 1.500  
 ±.015 ON FRACTIONAL DIMENSIONS

WE RESERVE THE RIGHT  
 TO DISCONTINUE ITEMS,  
 CHANGE SPECIFICATIONS  
 OR DESIGN AT ANY TIME  
 WITHOUT NOTICE AND  
 WITHOUT INCURRING  
 ANY OBLIGATIONS

PROPERTY OF  
**MICRO PLASTICS INC.**

CATALOG DRAWING  
 FLAT WIRE PUSH MOUNT CLIP  
 MICRO P/N 22RCPM1250  
 DWG. # 22RCPM1250  
 FILE SERVER\ENG\WEB

MATERIAL: NYLON 6/6

DATE

SCALE  
 1:1

**TA**

# Mouser Electronics

Authorized Distributor

Click to View Pricing, Inventory, Delivery & Lifecycle Information:

[Essentra:](#)

[22RCPM1250](#)