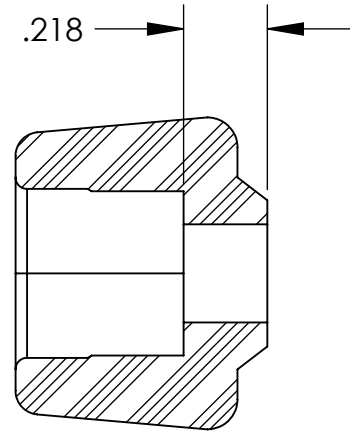
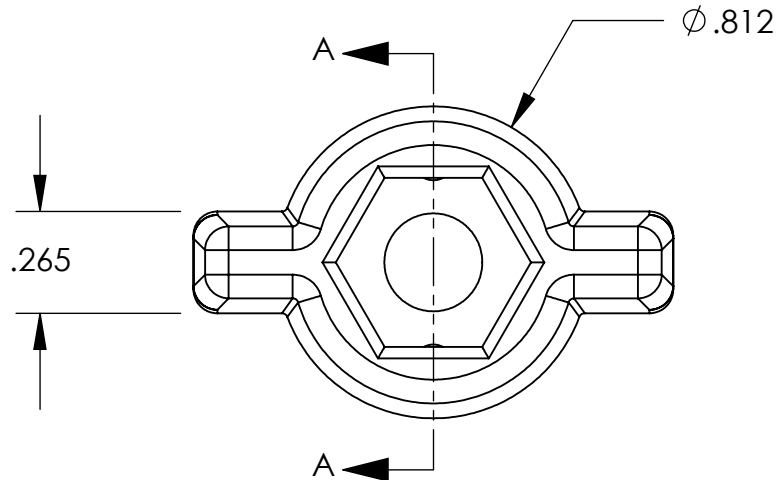
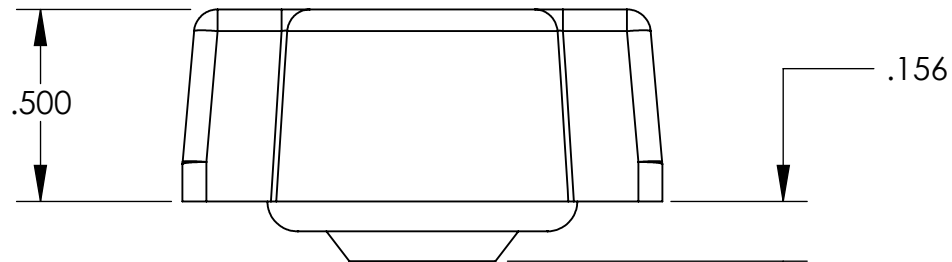


UNCONTROLLED DOCUMENT



SECTION A-A

NOTES:
TO FIT WITH A STEEL 1/4 - 20
HEX CAP SCREW AND A 1/4 - 20
STEEL HEX NUT.
ALL DIMENSIONS ARE REF.



TOLERANCES UNLESS NOTED

±.005 ON DIMENSIONS THRU .625
±.008 ON DIMENSIONS .626 THRU 1.000
±.010 ON DIMENSIONS 1.001 THRU 1.500
±.015 ON DIMENSIONS LARGER THAN 1.500
±.015 ON FRACTIONAL DIMENSIONS

WE RESERVE THE RIGHT
TO DISCONTINUE ITEMS,
CHANGE SPECIFICATIONS
OR DESIGN AT ANY TIME
WITHOUT NOTICE AND
WITHOUT INCURRING
ANY OBLIGATIONS

PROPERTY OF
MICRO PLASTICS INC.

CATALOG DRAWING
WING THUMB SCREW KNOB
MICRO P/N 29WN014WT
DWG. # 29WN014WT
FILE SERVER\ENG\WEB

MATERIAL: NYLON 6/6; WHITE

DATE

SCALE
2:1

DB

Mouser Electronics

Authorized Distributor

Click to View Pricing, Inventory, Delivery & Lifecycle Information:

[Essentra:](#)

[29WN014WT](#)