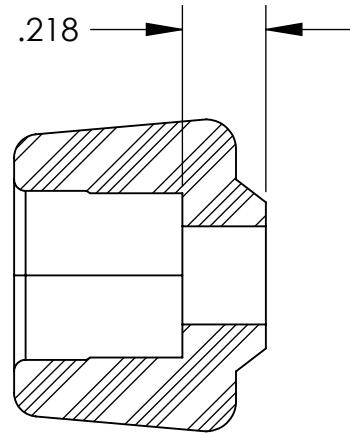
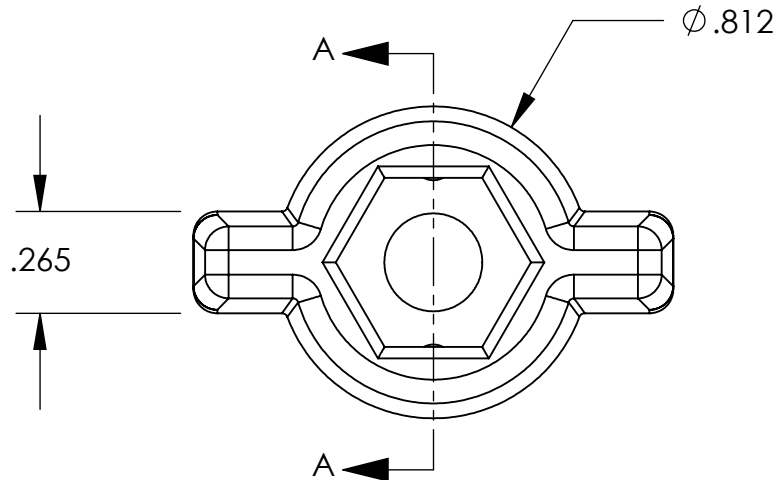
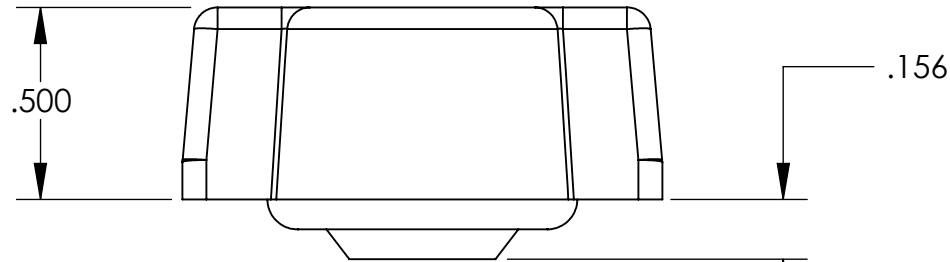


# UNCONTROLLED DOCUMENT



SECTION A-A

NOTES:  
TO FIT WITH A STEEL 1/4 - 20  
HEX CAP SCREW AND A 1/4 - 20  
STEEL HEX NUT.  
ALL DIMENSIONS ARE REF.



## TOLERANCES UNLESS NOTED

$\pm .005$  ON DIMENSIONS THRU  $.625$   
 $\pm .008$  ON DIMENSIONS  $.626$  THRU  $1.000$   
 $\pm .010$  ON DIMENSIONS  $1.001$  THRU  $1.500$   
 $\pm .015$  ON DIMENSIONS LARGER THAN  $1.500$   
 $\pm .015$  ON FRACTIONAL DIMENSIONS

WE RESERVE THE RIGHT  
TO DISCONTINUE ITEMS,  
CHANGE SPECIFICATIONS  
OR DESIGN AT ANY TIME  
WITHOUT NOTICE AND  
WITHOUT INCURRING  
ANY OBLIGATIONS

PROPERTY OF  
**MICRO PLASTICS INC.**

CATALOG DRAWING  
WING THUMB SCREW KNOB  
MICRO P/N 29WN014N  
DWG. # 29WN014N  
FILE SERVER\ENG\WEB

MATERIAL: NYLON 6/6

DATE

SCALE  
2:1

**DB**

# Mouser Electronics

Authorized Distributor

Click to View Pricing, Inventory, Delivery & Lifecycle Information:

[Essentra:](#)

[29WN014N](#)