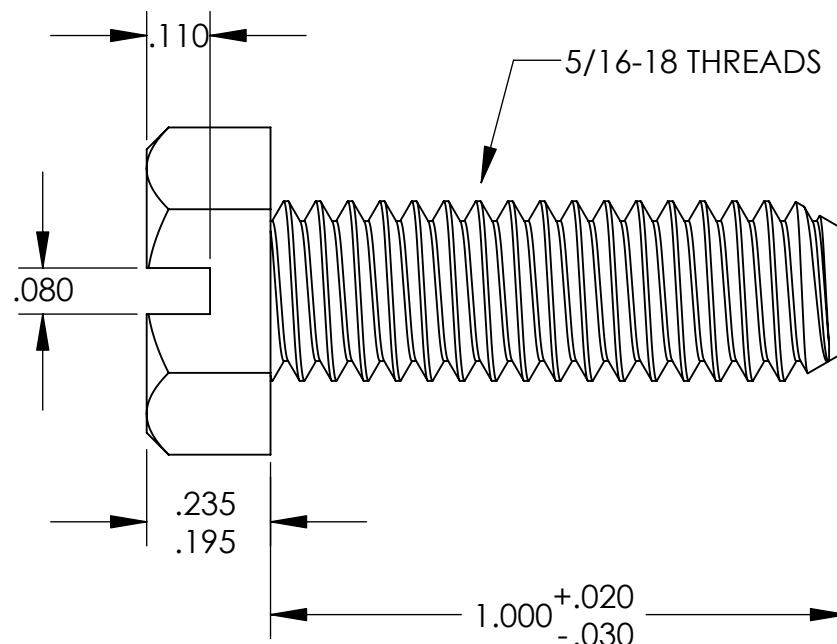
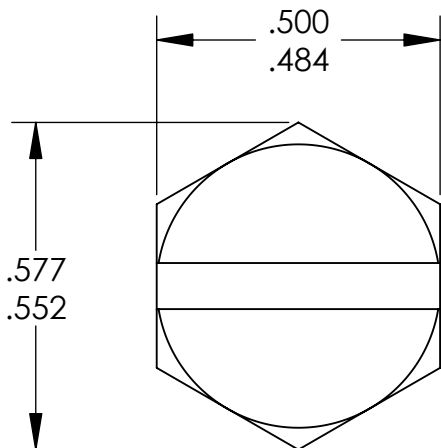


# UNCONTROLLED DOCUMENT



## TOLERANCES UNLESS NOTED

±.005 ON DIMENSIONS THRU .625  
 ±.008 ON DIMENSIONS .626 THRU 1.000  
 ±.010 ON DIMENSIONS 1.001 THRU 1.500  
 ±.015 ON DIMENSIONS LARGER THAN 1.500  
 ±.015 ON FRACTIONAL DIMENSIONS

WE RESERVE THE RIGHT  
 TO DISCONTINUE ITEMS,  
 CHANGE SPECIFICATIONS  
 OR DESIGN AT ANY TIME  
 WITHOUT NOTICE AND  
 WITHOUT INCURRING  
 ANY OBLIGATIONS

PROPERTY OF  
**MICRO PLASTICS INC.**

CATALOG DRAWING  
 SLOTTED HEX CAP SCREW  
 MICRO P/N 3231218100  
 DWG. # 3231218100  
 FILE SERVER\ENG\WEB

MATERIAL: 6/6 NYLON

DATE

SCALE  
 3:1

**JDD**

# Mouser Electronics

Authorized Distributor

Click to View Pricing, Inventory, Delivery & Lifecycle Information:

[Essentra:](#)

[3231218100](#)