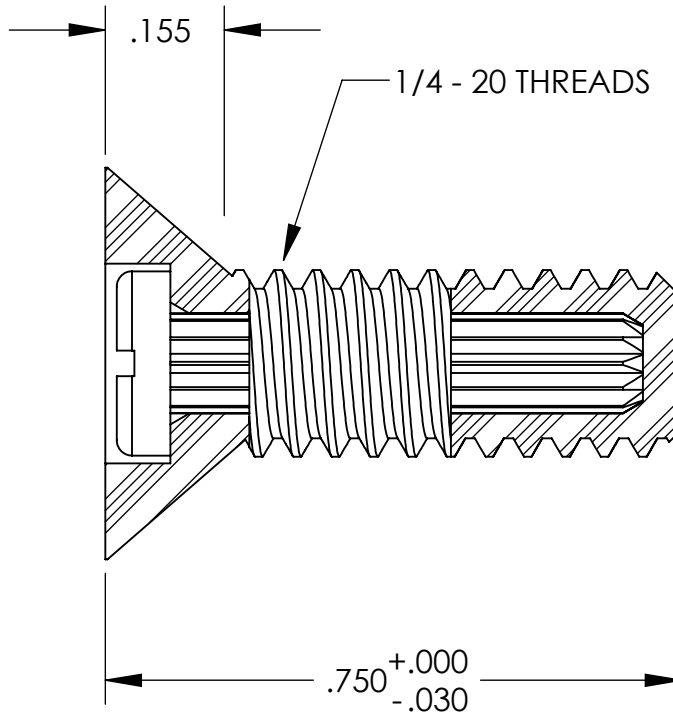
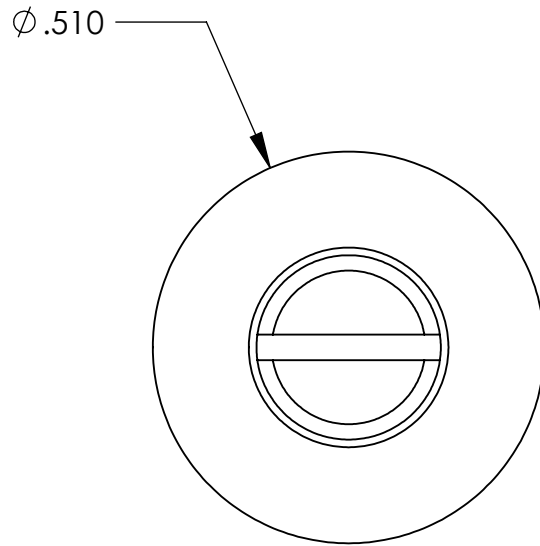


UNCONTROLLED DOCUMENT



NOTES:
ZINC COATED STEEL INSERT

TOLERANCES UNLESS NOTED

$\pm .005$ ON DIMENSIONS THRU $.625$
 $\pm .008$ ON DIMENSIONS $.626$ THRU 1.000
 $\pm .010$ ON DIMENSIONS 1.001 THRU 1.500
 $\pm .015$ ON DIMENSIONS LARGER THAN 1.500
 $\pm .015$ ON FRACTIONAL DIMENSIONS

WE RESERVE THE RIGHT
TO DISCONTINUE ITEMS,
CHANGE SPECIFICATIONS
OR DESIGN AT ANY TIME
WITHOUT NOTICE AND
WITHOUT INCURRING
ANY OBLIGATIONS

PROPERTY OF
MICRO PLASTICS INC.

CATALOG DRAWING
METAL CORE
MICRO P/N 392520A075
DWG. # 392520A075
FILE SERVER\ENG\WEB

MATERIAL: NYLON 6/6

DATE

SCALE
4:1

TA

Mouser Electronics

Authorized Distributor

Click to View Pricing, Inventory, Delivery & Lifecycle Information:

[Essentra:](#)

[392520A075](#)