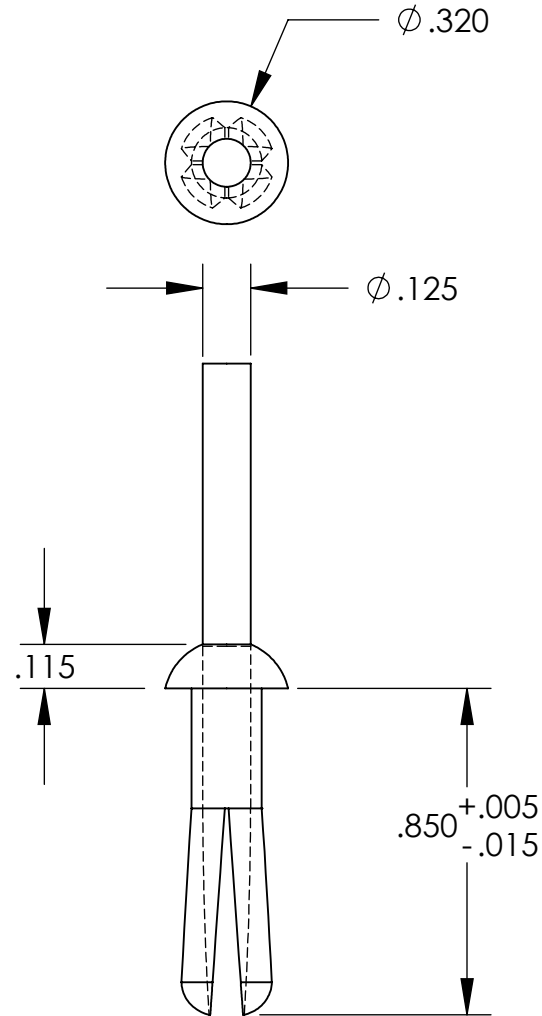


# UNCONTROLLED DOCUMENT



NOTES:  
 HOLE SIZE - .187  
 PANEL THICKNESS - .375 / .750  
 HEAD STYLE - BINDER  
 WILL NOT WORK WITH DRIVE RIVET INSERTION TOOLS

## TOLERANCES UNLESS NOTED

$\pm .005$  ON DIMENSIONS THRU .625  
 $\pm .008$  ON DIMENSIONS .626 THRU 1.000  
 $\pm .010$  ON DIMENSIONS 1.001 THRU 1.500  
 $\pm .015$  ON DIMENSIONS LARGER THAN 1.500  
 $\pm .015$  ON FRACTIONAL DIMENSIONS

WE RESERVE THE RIGHT  
 TO DISCONTINUE ITEMS,  
 CHANGE SPECIFICATIONS  
 OR DESIGN AT ANY TIME  
 WITHOUT NOTICE AND  
 WITHOUT INCURRING  
 ANY OBLIGATIONS

PROPERTY OF  
**MICRO PLASTICS INC.**

CATALOG DRAWING  
 POLY DRIVE RIVET  
 MICRO P/N 61PR300800  
 DWG. # 61PR300800  
 FILE SERVER\ENG\WEB

MATERIAL: NYLON 6/6

DATE

SCALE  
 2:1

**TA**

# Mouser Electronics

Authorized Distributor

Click to View Pricing, Inventory, Delivery & Lifecycle Information:

[Essentra:](#)

[61PR300800](#)