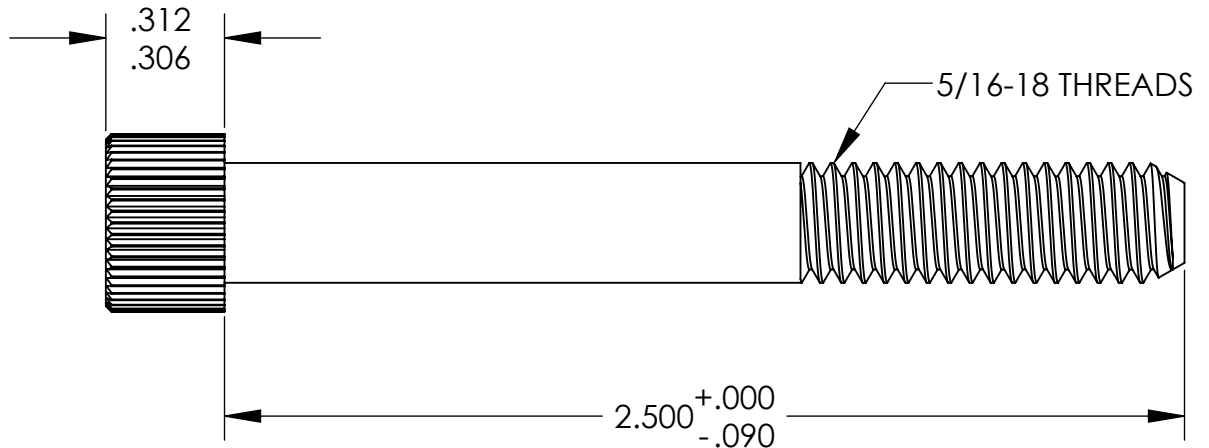
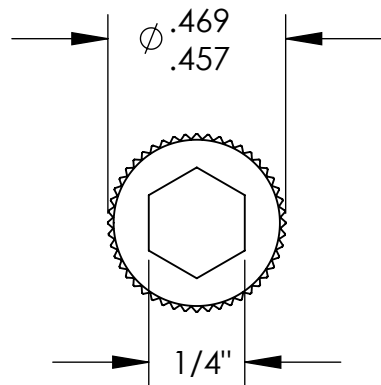


UNCONTROLLED DOCUMENT



NOTES:  
.151 MINIMUM KEY ENGAGEMENT

TOLERANCES UNLESS NOTED

$\pm .005$  ON DIMENSIONS THRU  $.625$   
 $\pm .008$  ON DIMENSIONS  $.626$  THRU  $1.000$   
 $\pm .010$  ON DIMENSIONS  $1.001$  THRU  $1.500$   
 $\pm .015$  ON DIMENSIONS LARGER THAN  $1.500$   
 $\pm .015$  ON FRACTIONAL DIMENSIONS

WE RESERVE THE RIGHT  
TO DISCONTINUE ITEMS,  
CHANGE SPECIFICATIONS  
OR DESIGN AT ANY TIME  
WITHOUT NOTICE AND  
WITHOUT INCURRING  
ANY OBLIGATIONS

PROPERTY OF		
MICRO PLASTICS INC.		
CATALOG DRAWING HEX SOCKET CAP MACHINE SCREW MICRO P/N 3431218250 DWG. # 3431218250 FILE SERVER\ENG\WEB		
MATERIAL:		6/6 NYLON
DATE	SCALE 2:1	JDD

# Mouser Electronics

Authorized Distributor

Click to View Pricing, Inventory, Delivery & Lifecycle Information:

[Essentra:](#)

[3431218250](#)