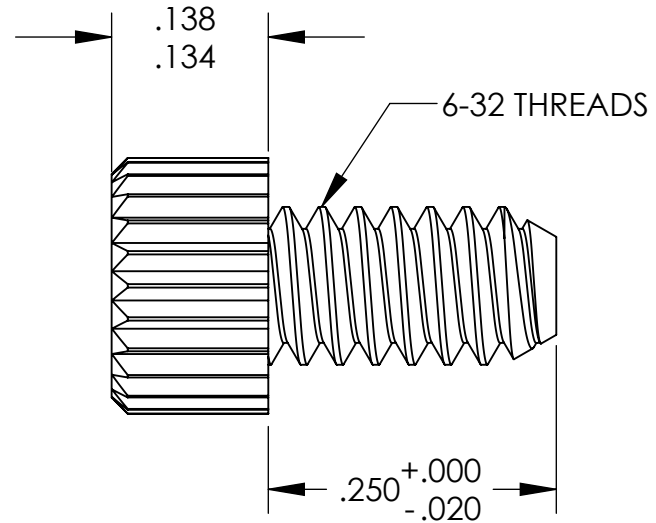
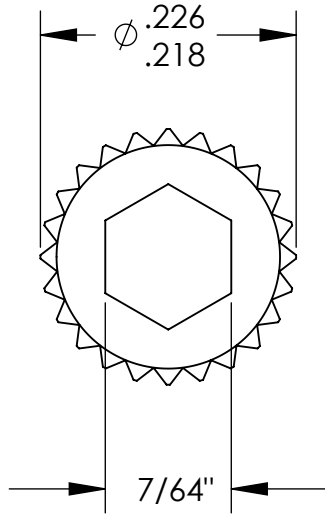


UNCONTROLLED DOCUMENT



NOTES:  
.064 MINIMUM KEY ENGAGEMENT

TOLERANCES UNLESS NOTED

$\pm .005$  ON DIMENSIONS THRU  $.625$   
 $\pm .008$  ON DIMENSIONS  $.626$  THRU  $1.000$   
 $\pm .010$  ON DIMENSIONS  $1.001$  THRU  $1.500$   
 $\pm .015$  ON DIMENSIONS LARGER THAN  $1.500$   
 $\pm .015$  ON FRACTIONAL DIMENSIONS

WE RESERVE THE RIGHT  
TO DISCONTINUE ITEMS,  
CHANGE SPECIFICATIONS  
OR DESIGN AT ANY TIME  
WITHOUT NOTICE AND  
WITHOUT INCURRING  
ANY OBLIGATIONS

PROPERTY OF  
MICRO PLASTICS INC.

CATALOG DRAWING  
HEX SOCKET CAP MACHINE SCREW  
MICRO P/N 3406320025  
DWG. # 3406320025  
FILE SERVER\ENG\WEB

MATERIAL: 6/6 NYLON

DATE

SCALE  
6:1

JDD

# Mouser Electronics

Authorized Distributor

Click to View Pricing, Inventory, Delivery & Lifecycle Information:

[Essentra:](#)

[3406320025](#)