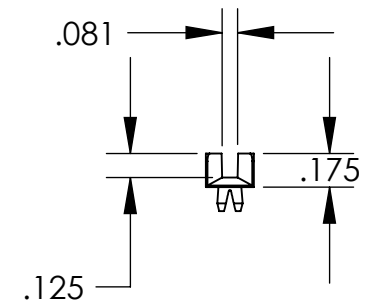
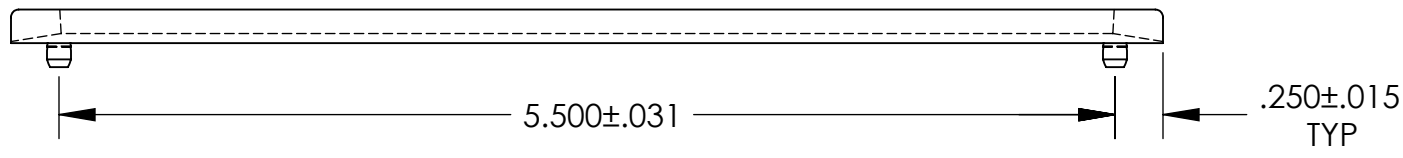
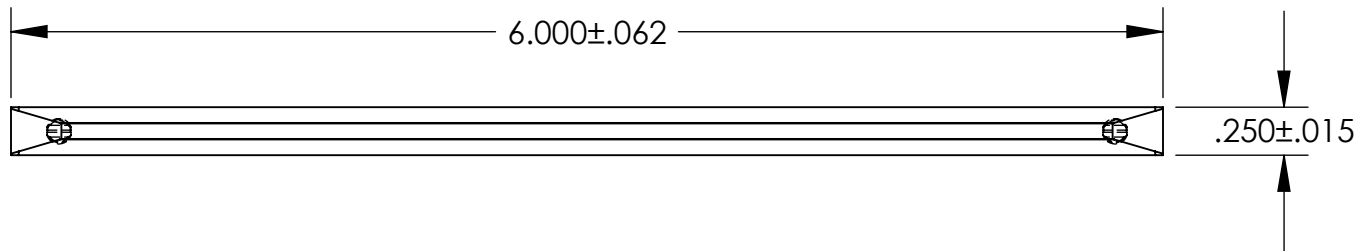


UNCONTROLLED DOCUMENT



NOTES:
THE PCB CARD GUIDE IS DESIGNED TO FIT A $.125 \pm .003 / -.001$ FRONT
DIAMETER HOLE AND A $.120 \pm .005 \times .218$ SLOT REAR HOLE

TOLERANCES UNLESS NOTED

$\pm .005$ ON DIMENSIONS THRU $.625$
 $\pm .008$ ON DIMENSIONS $.626$ THRU 1.000
 $\pm .010$ ON DIMENSIONS 1.001 THRU 1.500
 $\pm .015$ ON DIMENSIONS LARGER THAN 1.500
 $\pm .015$ ON FRACTIONAL DIMENSIONS

WE RESERVE THE RIGHT
TO DISCONTINUE ITEMS,
CHANGE SPECIFICATIONS
OR DESIGN AT ANY TIME
WITHOUT NOTICE AND
WITHOUT INCURRING
ANY OBLIGATIONS

PROPERTY OF
MICRO PLASTICS INC.

CATALOG DRAWING
NYLON PCB CARD GUIDES
MICRO P/N 21CGS00600WS
DWG. # 21CGS00600WS
FILE SERVER\ENG\WEB

MATERIAL: NYLON 6/6

DATE

SCALE
1:1

SD

Mouser Electronics

Authorized Distributor

Click to View Pricing, Inventory, Delivery & Lifecycle Information:

Essentra:

[21CGS00600WS](#)