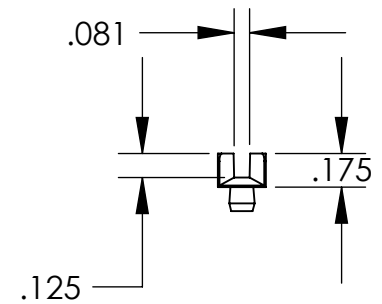
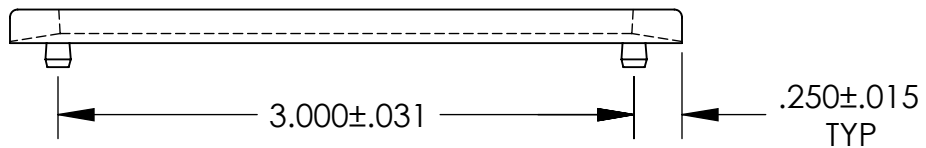
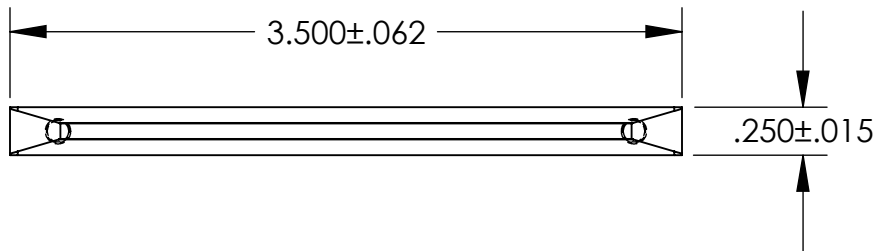


# UNCONTROLLED DOCUMENT



NOTES:  
THE PCB CARD GUIDE IS DESIGNED TO FIT A .125  $\pm$ .003/-.001 FRONT  
DIAMETER HOLE AND A .120  $\pm$ .005 x .218 SLOT REAR HOLE

## TOLERANCES UNLESS NOTED

$\pm$ .005 ON DIMENSIONS THRU .625  
 $\pm$ .008 ON DIMENSIONS .626 THRU 1.000  
 $\pm$ .010 ON DIMENSIONS 1.001 THRU 1.500  
 $\pm$ .015 ON DIMENSIONS LARGER THAN 1.500  
 $\pm$ .015 ON FRACTIONAL DIMENSIONS

WE RESERVE THE RIGHT  
TO DISCONTINUE ITEMS,  
CHANGE SPECIFICATIONS  
OR DESIGN AT ANY TIME  
WITHOUT NOTICE AND  
WITHOUT INCURRING  
ANY OBLIGATIONS

PROPERTY OF  
**MICRO PLASTICS INC.**

CATALOG DRAWING  
NYLON PCB CARD GUIDES  
MICRO P/N 21CGS00350  
DWG. # 21CGS00350  
FILE SERVER\ENG\WEB

MATERIAL: NYLON 6/6

DATE

SCALE  
1:1

**SD**

# Mouser Electronics

Authorized Distributor

Click to View Pricing, Inventory, Delivery & Lifecycle Information:

[Essentra:](#)

[21CGS00350](#)