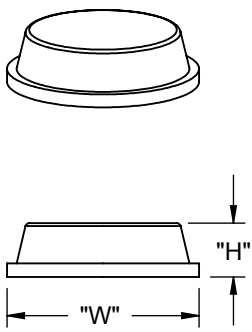
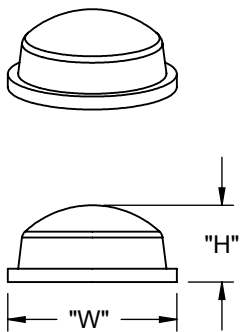


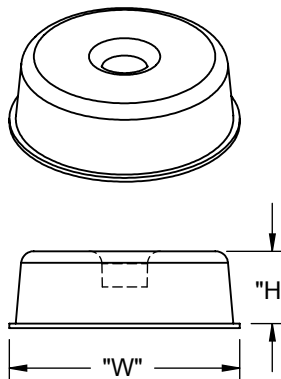
TYPE 1.



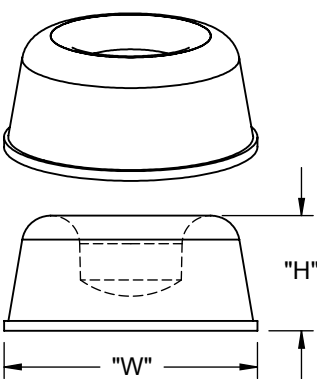
TYPE 2.



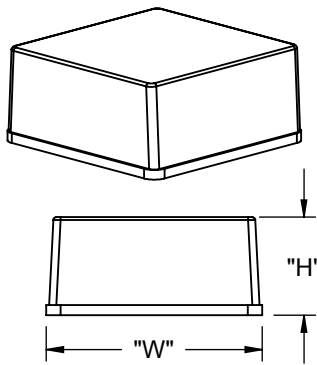
TYPE 3.



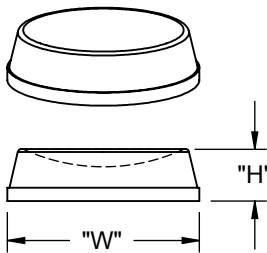
TYPE 4.



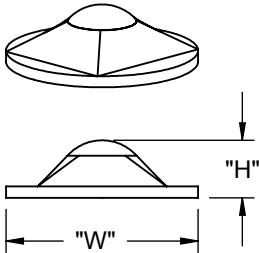
TYPE 5.



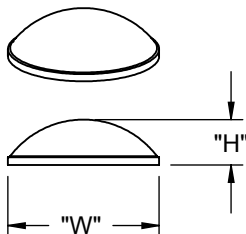
TYPE 6.



TYPE 7.





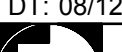
TYPE 8.



TYPE 9.

PART NO.	DIA. (OR "W") ±.020 [±0.5]	HEIGHT "H" ±.020 [±0.5]	6 X 12 MATRIX KISS CUT PAD PCS/PAD	TYPE	QTY.CTN
RBS-3R	.50 [12.7]	.23 [5.8]	200	1 (PYRAMID)	5000
RBS-19	.81 [20.5]	.30 [7.6]	98		2646
RBS-20	.40 [10.2]	.10 [2.5]	242		5082
RBS-29	.78 [19.8]	.25 [6.4]	98		2940
RBS-32R	.50 [12.7]	.12 [3.1]	200		5000
RBS-1		.14 [3.5]		5000	
RBS-5		.06 [1.6]		5000	
RBS-6		.25 [6.3]		5000	
RBS-11		.65 [16.5]		.40 [10.2]	128
RBS-24	.81 [20.5]	.12 [3.1]	72	2 (CYLINDRICAL)	2520
RBS-34	.37 [9.5]		300		6000
RBS-35			200		5000
RBS-41	.78 [20.0]	.20 [5.1]	84		3360
RBS-44	.75 [19.1]	.16 [4.1]	98		2450
RBS-72	1.24 [31.5]	.10 [2.5]	32	2400	
RBS-2	.44 [11.1]	.20 [5.1]	242	3 (DOMES)	5082
RBS-8	.70 [17.6]	.38 [9.6]	98		2254
RBS-15	.62 [16.0]	.31 [7.9]	128		3200
RBS-22	.38 [9.6]	.21 [5.4]	300		6000
RBS-27	.31 [7.9]	.08 [2.2]	450		5400
RBS-37	.72 [18.3]	.56 [14.2]	100 SEPARATE PARTS		1500
RBS-39	.75 [19.1]	.07 [1.9]	84		5040
RBS-40	.25 [6.4]	.06 [1.6]	578		15028
RBS-30	1.8 [45.7]	.60 [15.8]	100 SEPARATE PARTS	4 (ROUND)	500
RBS-17	.88 [22.3]	.40 [10.1]	72	5 (ROUND)	1440
RBS-4	.78 [19.8]	.38 [9.7]	100 SEPARATE PARTS	6 (SQUARE)	5600
RBS-36	1.00 [25.4]	.18 [4.7]	55		2310
RBS-18	.50 [12.7]	.14 [3.5]	200	7 (ROUND)	5000
RBS-33-SD		.15 [3.8]		8 (ROUND-PYRAMID)	5000
RBS-7	.335 [8.6]	.085 [2.2]	450	9 (HEMISPHERE)	5400
RBS-10	.39 [10]	.12 [3]	288		7200
RBS-12	.38 [9.6]	.15 [3.8]	72		

NOTES:
1. MATERIAL: POLYURETHANE (RMS-64),
60-70 DUROMETER, SHORE A.
2. STANDARD COLOR: CLEAR AND BLACK:
TO ORDER BLACK ADD "-BK" TO PART NO.
BROWN "-BN", WHITE "-WH", OR GRAY "-GY"
AVAILABLE BY SPECIAL ORDER ONLY.
PART NO. RBS-33-SD AND RBS-10 AVAILABLE IN CLEAR ONLY.
3. ADHESIVE: RUBBER (RMS-68).
4. LIGHTER BUMPER COLORS MAY SHOW SOME DARKENING
OR YELLOWING WHEN NOT STORED IN ORIGINAL UNOPENED CARTON.
*NON STAINING, NON MARRING.
*CRACK RESISTANT.

			TITLE: RICHCO BUMPERS							UNITS: INCH[mm]			
Z	-11 TO .65" & RE-ADDED CHART HEADINGS, ECN #1428	DZ	01/27/2017	CREATED USING SOLIDWORKS	FILE #: RBS		DWN: SM	APP: DJZ	FINAL				
Y	CHANGED RBS-12 TYPE TO 9, ECN # 1420	DZ	03/23/2016	TOLERANCES UNLESS NOTED .XX=±.010 .XXX=±.005 FRAC.=±1/64 ANG.=±1°	SHEET: 1 OF 1		SHEET SIZE: B		DT: 08/12/04	CHKD: RG	PART #	PRINT TYPE CA	
X	SEE CO 200507 FOR CHANGES	SK	03/08/2010		RE:		RICHCO, INC.				ESSENTRA		
W	SEE CO 200500 FOR CHANGES	SK	02/22/2010								SEE TABLE		
-	SEE ENGINEERING FOR REV. A-V	-	----										
REV.	DESCRIPTION	ENGR.	DATE										

Mouser Electronics

Authorized Distributor

Click to View Pricing, Inventory, Delivery & Lifecycle Information:

Essentra:

[RBS-20](#) [RBS-44BK](#) [RBS-19BK](#) [RBS-18](#) [RBS-72BK](#) [RBS-11BK](#) [RBS-7BK](#) [RBS-2BK](#) [RBS-34](#) [RBS-24BK](#) [RBS-6BK](#) [RBS-41BK](#) [RBS-5](#) [RBS-1BK](#) [RBS-12BK](#) [RBS-17](#) [RBS-29BK](#) [RBS-6](#) [RBS-1](#) [RBS-10](#) [RBS-11](#) [RBS-12](#) [RBS-15](#) [RBS-15BK](#) [RBS-8BK](#) [RBS-44](#) [RBS-4BK](#) [RBS-5BK](#) [RBS-7](#) [RBS-72](#) [RBS-8](#) [RBS-3R](#) [RBS-3RBK](#) [RBS-4](#) [RBS-40](#) [RBS-40BK](#) [RBS-41](#) [RBS-36](#) [RBS-36BK](#) [RBS-37](#) [RBS-37BK](#) [RBS-39](#) [RBS-39BK](#) [RBS-30BK](#) [RBS-32R](#) [RBS-32RBK](#) [RBS-34BK](#) [RBS-35](#) [RBS-35BK](#) [RBS-22BK](#) [RBS-24](#) [RBS-27](#) [RBS-27BK](#) [RBS-29](#) [RBS-30](#) [RBS-17BK](#) [RBS-18BK](#) [RBS-19](#) [RBS-2](#) [RBS-20BK](#) [RBS-22](#)