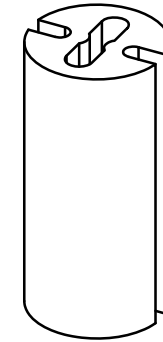
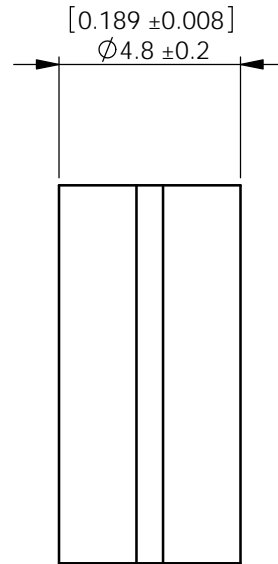
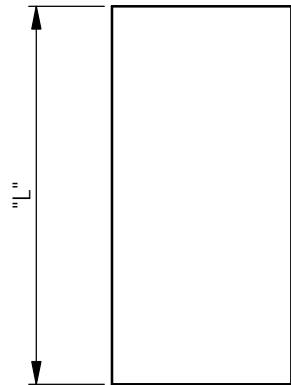
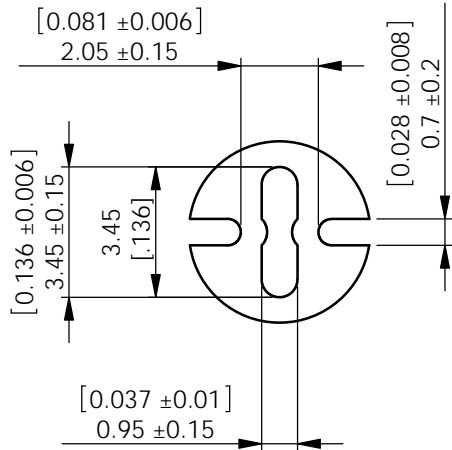


AVAILABLE BY SPECIAL ORDER NAFTA REGION ONLY



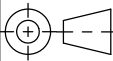
ALTERNATE UNITS FOR REFERENCE ONLY

INFORMATION CONTAINED IN THIS DOCUMENT IS CONFIDENTIAL TO RICHCO INTERNATIONAL Co. Ltd. AND MAY NOT BE DISCLOSED OR REPRODUCED IN WHOLE OR PART WITHOUT THEIR WRITTEN CONSENT.

RICHCO, INC.
WWW.RICHCO-INC.COM

ALL DIMENSIONS IN mm
GENERAL TOLERANCES ±0.25
UNLESS OTHERWISE STATED
1 DECIMAL PLACE ±
2 DECIMAL PLACES ±
ANGULAR ±1°

THIRD
ANGLE



MATERIAL:
PVC(RMS-388)

COLOUR:
BLACK

DESCRIPTION:
LED MOUNTS

PART No:
LEDM-2-XX

DRG No:
786-9021

NPR No:

SHEET SIZE A4

DRN
OW

DATE
14/10/04

CHKD
NJB

DATE
14/10/04

SCALE
NTS

SHEET No.
1 OF 1

NOTES:
1) FOR USE WITH 3mm, T-1 LEDS.
2) PARTS AVAILABLE IN 1mm INCREMENTS
3) SPECIAL LENGTHS AVAILABLE
BY SPECIAL ORDER

PART No.	LENGTH	DRG No:	NPR No:	SHEET SIZE
LEDM-2-02 - LEDM-2-30	2.0mm - 30mm	786-9021		A4

Mouser Electronics

Authorized Distributor

Click to View Pricing, Inventory, Delivery & Lifecycle Information:

[Essentra:](#)

[LEDM-2-11](#)