

R2T24-19 High Gain Panel Antenna



ROOTENNA[®] HIGH GAIN PANEL ANTENNA: 2400 TO 2700 MHz OPERATION

The RooTenna[®] high gain panel antenna offered by Laird is designed to allow integration of the customer's radio equipment inside the weatherproof compartment. The radio compartment is big enough to house transceivers, amplifiers and other electronic equipment. The antenna design utilizes a unique suspended wire element over a solid backplane for more consistent performance over temperature and humidity conditions. The housing is UV stabilized ABS plastic. The backplate is alodine coated aluminium with stainless steel fasteners. All bracket fasteners are stainless steel for corrosion protection.

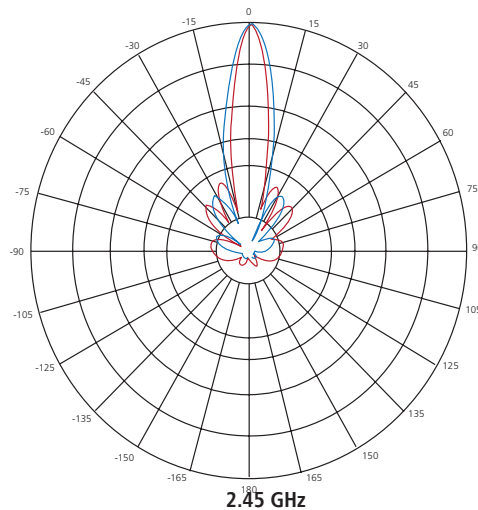
FEATURES

- RooTenna[®], the antenna with a pouch!
- Low profile 19dBi antenna gain
- 16.25" x 14.75" x 1.25" weatherproof radio compartment
- Low heat absorption white UV protected housing
- Vertical or horizontal polarization, beamwidth 15/20deg
- Available with RPSMA, RPTNC, MC Card, MMCX, RPMCMCX and U.FL antenna connector

MARKETS

- Integrated radio/antenna units
- WISP CPE equipment
- WiMAX applications
- 802.11b/g applications

ANTENNA PATTERNS



Americas: +1.847 839.6907
IAS-AmericasEastSales@lairdtech.com

Europe: +44.1628.858941
IAS-EUSales@lairdtech.com

Asia: +86.21.5855.0827.127
IAS-AsiaSales@lairdtech.com

www.lairdtech.com

SPECIFICATIONS

PARAMETER	MIN	TYP	MAX	UNITS
Frequency Range	2400		2700	MHz
Gain		19		dBi
3db Beam Angle (E-Plane)		19		Deg
3db Beam Angle (H-Plane)		16		Deg
Front to Back	30			dB
VSWR		1.5:1		
Impedance		50		OHM
Input Power			50	W
Operating Temperature	-45		+70	Deg C
Weight		6 (2.7)		oz (kg)
Compartment Dimension (L x W x H)		16.25" x 14.75" x 1.25" (413 x 375 x 32)		in (mm)
Outside Dim (L x W x H)		18.5" x 16.8" x 2.5" (470 x 427 x 64)		in (mm)

WIND LOADING

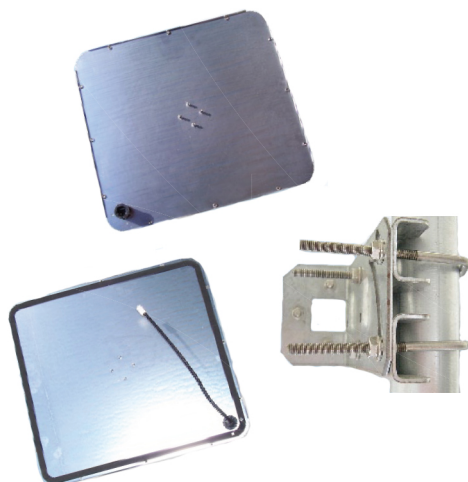
	100 MPH	125 MPH	100 MPH WITH ½" RADIAL ICE
Force (Lbs)	77.8	121	83

SYSTEM ORDERING INFORMATION

R2T24-19-XXXX 2400-2700MHz 19dBi high gain RooTenna[®] compartment antenna
(XXXX= connector type. Please specify RSMA, RTNC, MMCX, RMMCX, MC or UFL when ordering)

NOTES

All shipments F.O.B. Schaumburg, IL 60173



ANT-DS-R2T24-19 0515

Any information furnished by Laird Inc. and its agents is believed to be accurate and reliable. All specifications are subject to change without notice. Responsibility for the use and application of Laird materials rests with the end user, since Laird and its agents cannot be aware of all potential uses. Laird makes no warranties as to the fitness, merchantability or suitability of any Laird materials or products for any specific or general uses. Laird shall not be liable for incidental or consequential damages of any kind. All Laird products are sold pursuant to the Laird Terms and Conditions of sale in effect from time to time, a copy of which will be furnished upon request. © Copyright 2015 Laird Inc. All Rights Reserved. Laird, Laird Technologies, the Laird Logo, and other marks are trademarks or registered trademarks of Laird Inc. or an affiliate company thereof. Other product or service names may be the property of third parties. Nothing herein provides a license under any Laird or any third party intellectual property rights.

Mouser Electronics

Authorized Distributor

Click to View Pricing, Inventory, Delivery & Lifecycle Information:

Laird Connectivity:

[R2T24-19](#) [R2T24-19-MC](#) [R2T24-19-MMCX](#) [R2T24-19-RMMCX](#) [R2T24-19-RSMA](#) [R2T24-19-RTNC](#) [R2T24-19-UFL](#)